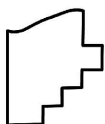
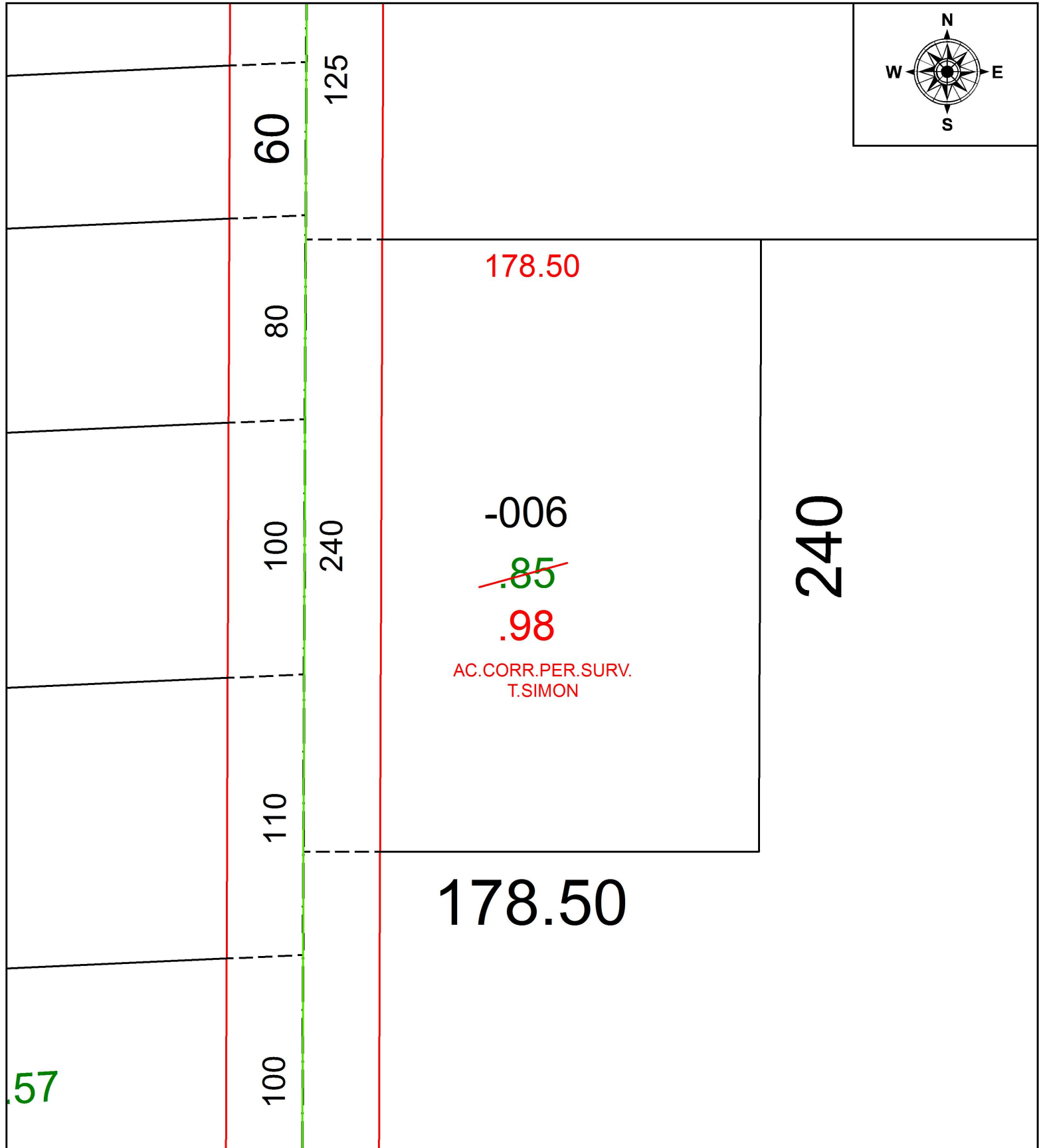
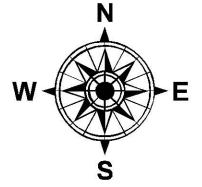


PARENT PARCEL: 11-00-073-000-006

CHILD PARCEL:

STARTING POINT: NORTHWEST CORNER OF O.L.73

19-04039-C



SPLITS/DEEDS PROCESSED
 LORAIN COUNTY TAX MAP DEPARTMENT
 226 MIDDLE AVE. ELYRIA, OH

SURVEYED BY: THOMAS A. SIMON

CLOSURE: 1:2147483648

MAP PAGE(S): 11-00-073

APPROVED BY: RRM DATE: 1-29-19

SCALE: 1" = 50 PRIOR INSTRUMENT: 20170653614