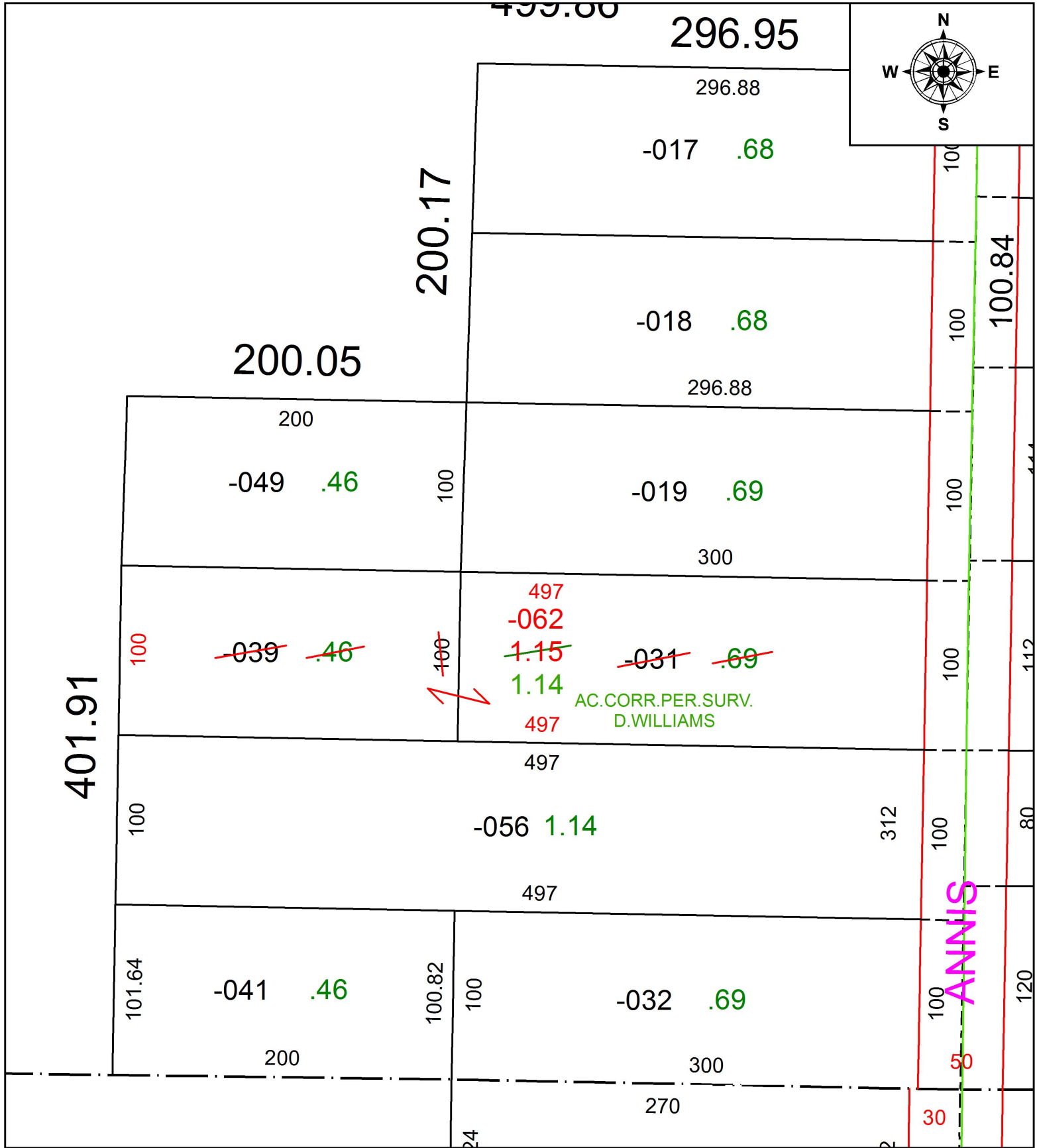


PARENT PARCEL: 09-00-004-101-031, -039

CHILD PARCEL: 09-00-004-101-062

STARTING POINT: SOUTHEAST CORNER OF O.L.4

19-04034-C



SPLITS/DEEDS PROCESSED
 LORAIN COUNTY TAX MAP DEPARTMENT
 226 MIDDLE AVE. ELYRIA, OH

SURVEYED BY: DAVID A. WILLIAMS

CLOSURE: 1:2147483648

MAP PAGE(S): 9-00-004

APPROVED BY: RRM DATE: 1-24-19

SCALE: 1" = 75' PRIOR INSTRUMENT: DV 724/377