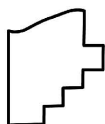
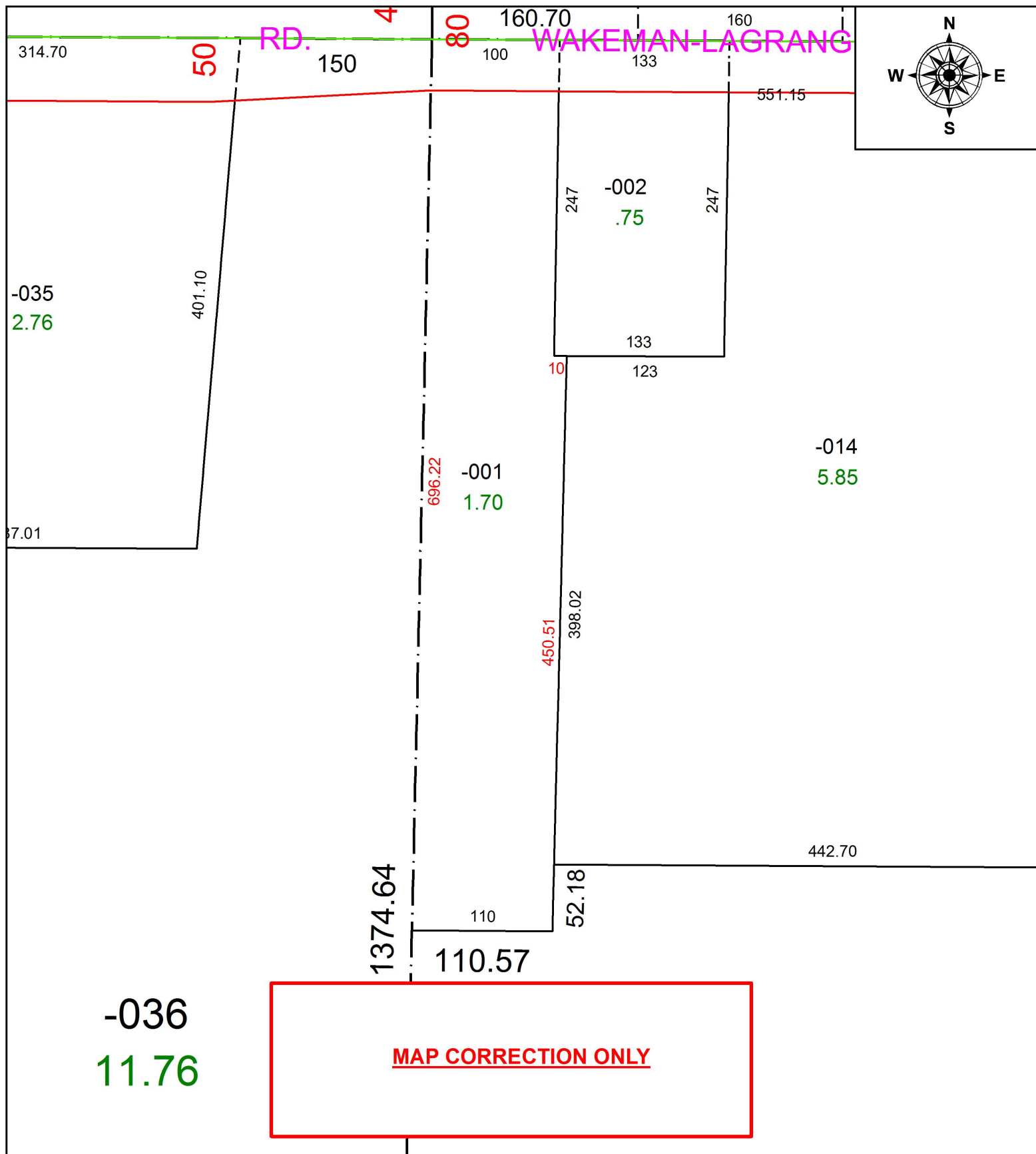


PARENT PARCEL: 16-00-054-000-001

CHILD PARCEL:

STARTING POINT: NORTHWEST CORNER OF O.L.54

19-04033-C



SPLITS/DEEDS PROCESSED
 LORAIN COUNTY TAX MAP DEPARTMENT
 226 MIDDLE AVE. ELYRIA, OH

SURVEYED BY: JOSHUA S. RIEDY
 CLOSURE: 1:162,185
 MAP PAGE(S): 16-00-054
 APPROVED BY: RRM DATE: 1-25-19
 SCALE: 1" = 100 PRIOR INSTRUMENT: 20170628034