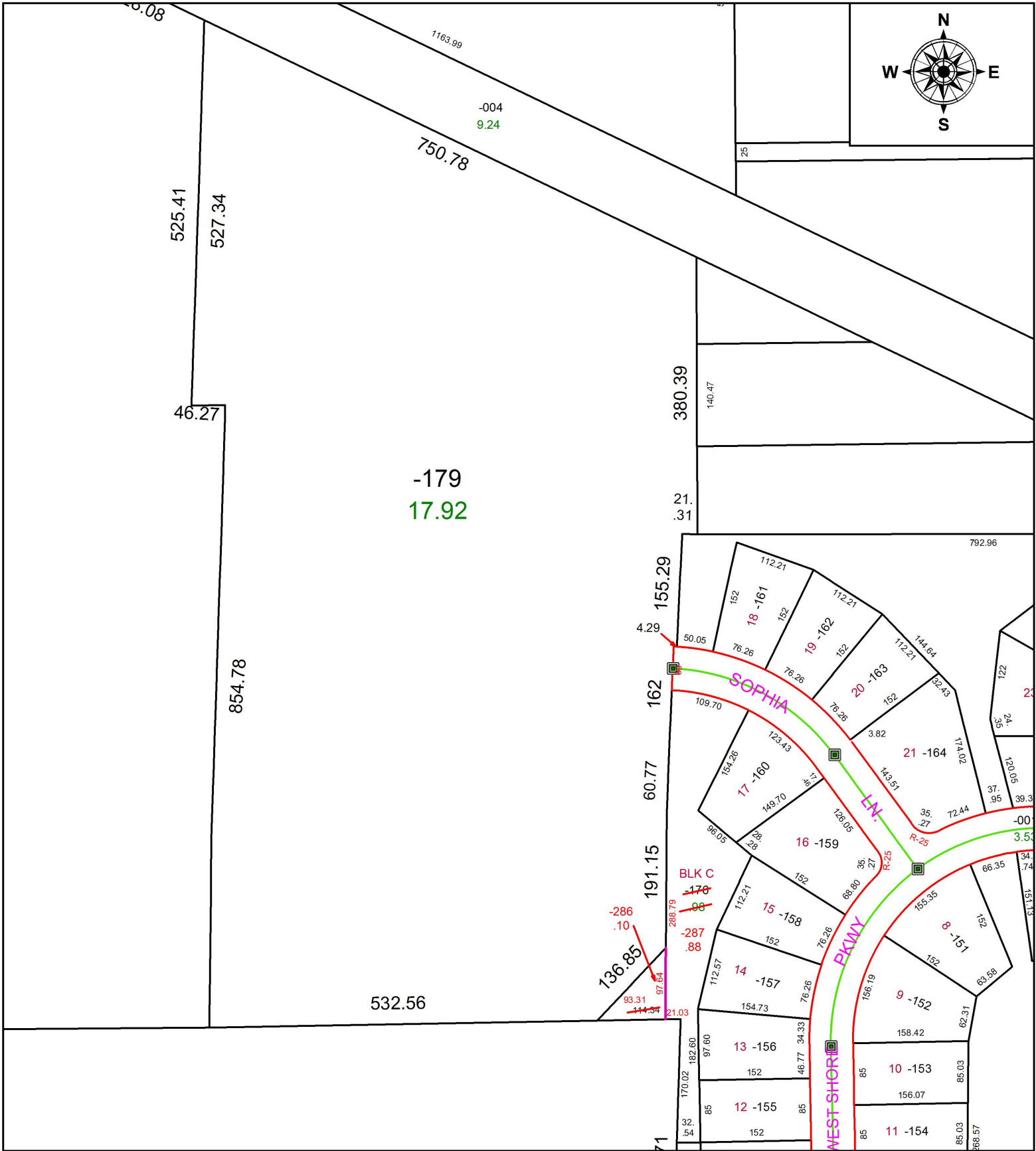


PARENT PARCEL: 07-00-030-000-176, -179

CHILD PARCEL: 07-00-030-000-179, -286, -287

STARTING POINT: NORTHWEST CORNER OF BLOCK C IN NORTH RIDGE POINTE SUB. NO.1

19-04030



**SPLITS/DEEDS PROCESSED**  
 LORAIN COUNTY TAX MAP DEPARTMENT  
 226 MIDDLE AVE. ELYRIA, OH

SURVEYED BY: ALEX E. MARKS

CLOSURE: 1:64,537

MAP PAGE(S): 7-00-030

APPROVED BY: RRM DATE: 10-15-19

SCALE: 1" = 175 PRIOR INSTRUMENT: PV 101/47-51