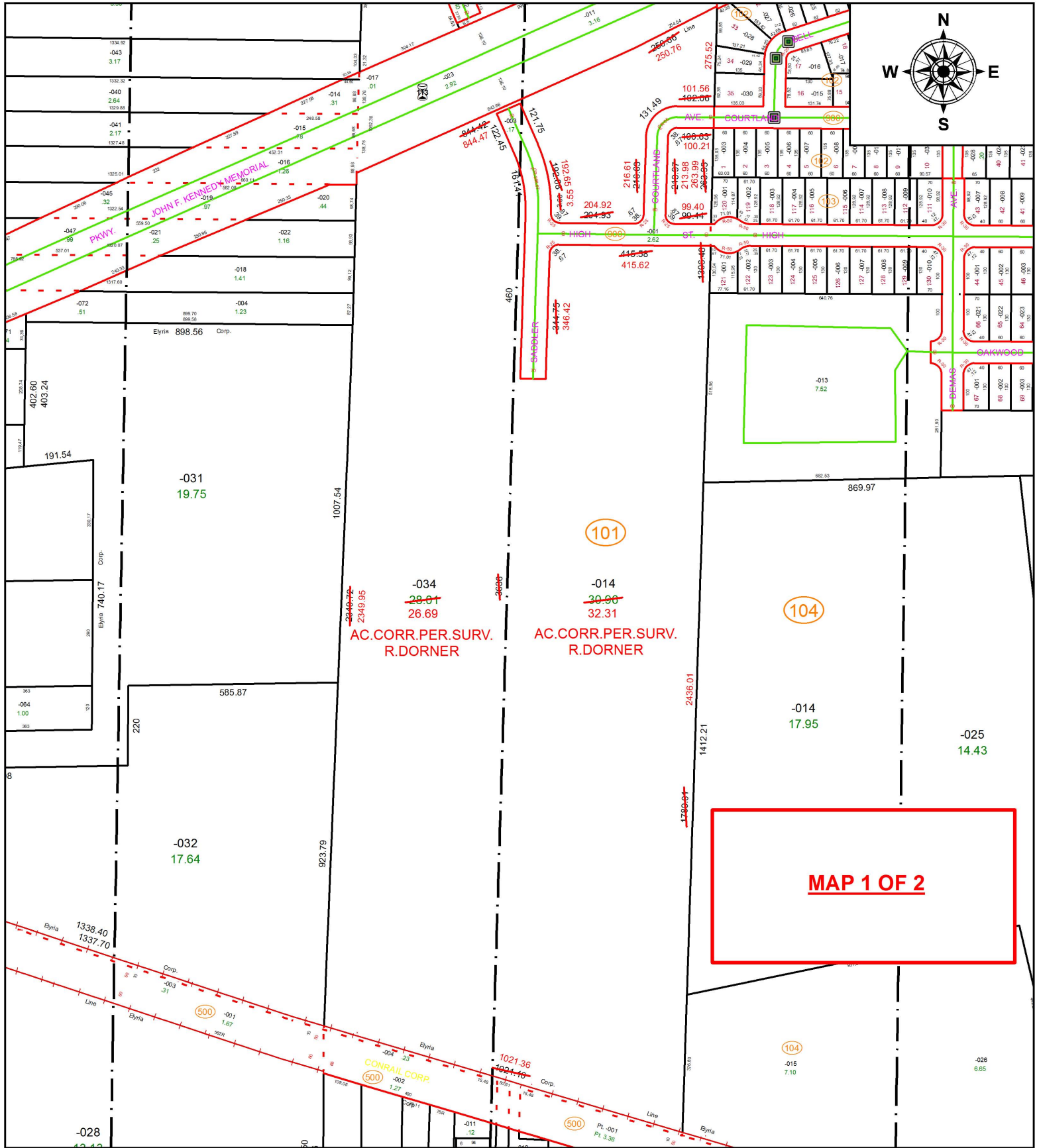


PARENT PARCEL: 06-24-022-000-034, 06-24-023-101-014

CHILD PARCEL:

STARTING POINT: INTERSECTION OF C/L OF COURTLAND ST. AND C/L OF BELL AVE.

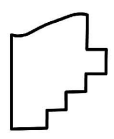
19-04029-A



~~2349.95~~  
2349.95  
-034  
~~28.01~~  
26.69  
AC.CORR.PER.SURV.  
R.DORNER

~~30.96~~  
30.96  
-014  
~~30.96~~  
32.31  
AC.CORR.PER.SURV.  
R.DORNER

**MAP 1 OF 2**



**SPLITS/DEEDS PROCESSED**  
LORAIN COUNTY TAX MAP DEPARTMENT  
226 MIDDLE AVE. ELYRIA, OH

SURVEYED BY: ROBERT A. DORNER  
CLOSURE: 1:363,193  
MAP PAGE(S): 6-24-023  
APPROVED BY: RRM DATE: 1-16-19  
SCALE: 1" = 350 PRIOR INSTRUMENT: 20180681930