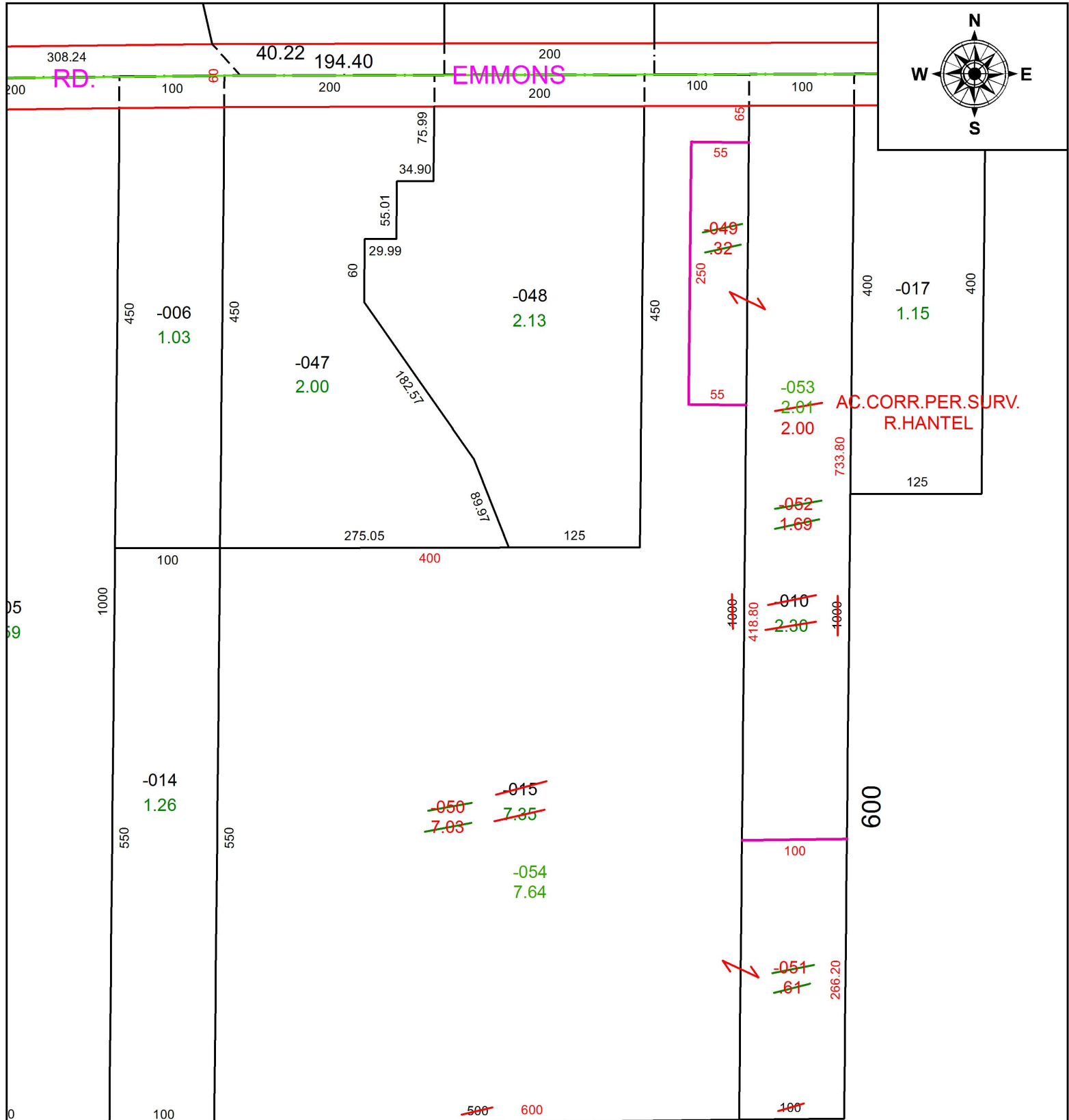


PARENT PARCEL: 12-00-029-000-010, -015

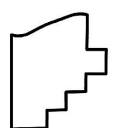
CHILD PARCEL: 12-00-029-000-049 THRU -054

STARTING POINT: INTERSECTION OF C/L OF EMMONS RD. AND C/L OF BOONE RD.

19-04028



787.85



SPLITS/DEEDS PROCESSED
LORAIN COUNTY TAX MAP DEPARTMENT
226 MIDDLE AVE. ELYRIA, OH

SURVEYED BY: RICHARD F. HANTEL
 CLOSURE: 1:2147483648
 MAP PAGE(S): 12-00-029
 APPROVED BY: RRM DATE: 10-10-19
 SCALE: 1" = 125 PRIOR INSTRUMENT: OR 963/796