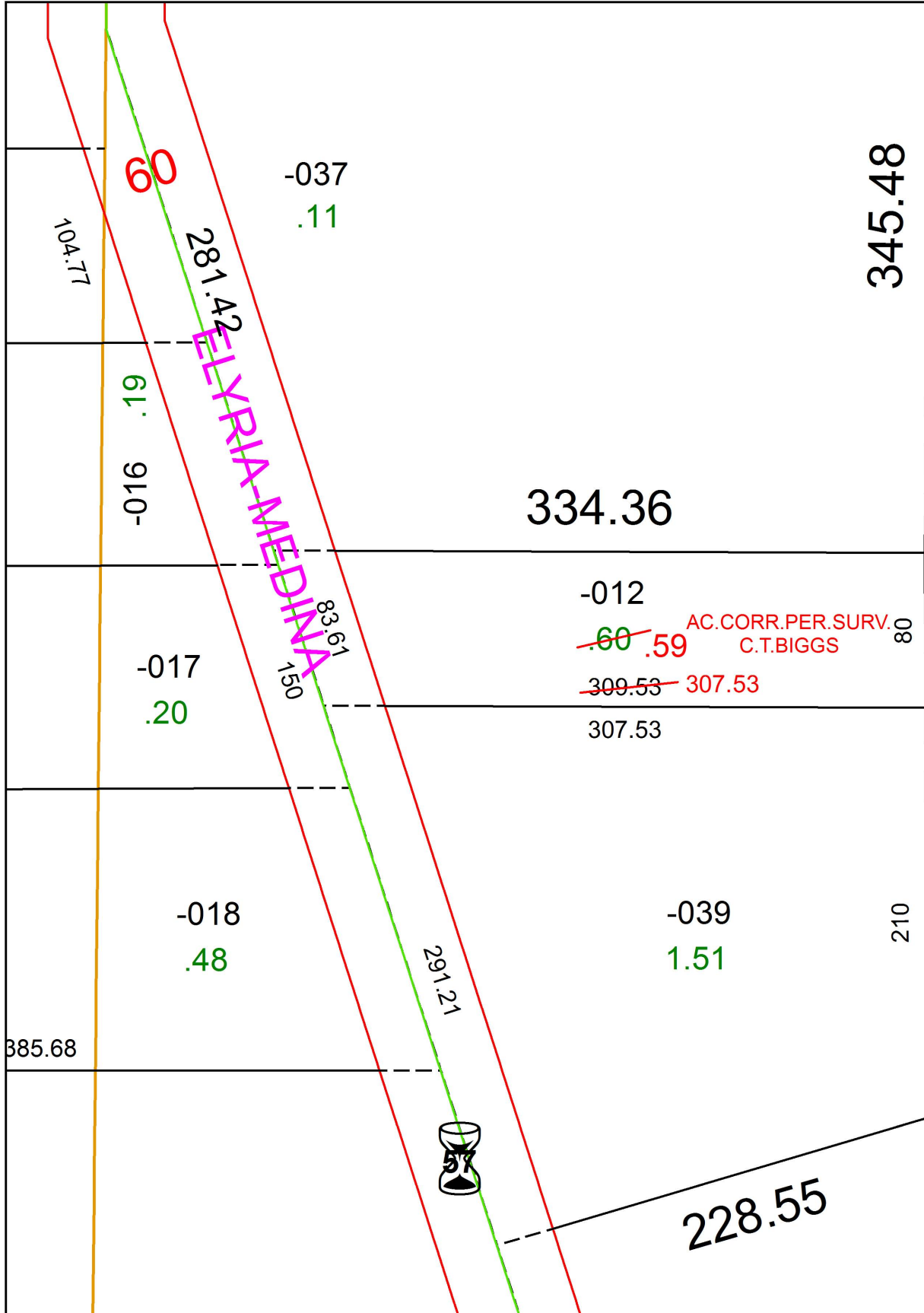


PARENT PARCEL: 11-00-097-000-012

CHILD PARCEL:

STARTING POINT: SOUTHWEST CORNER OF LAND CONVEYED TO JOSPHINE KANTOSKY (DV 242/477)

19-04027-A



SPLITS/DEEDS PROCESSED
 LORAIN COUNTY TAX MAP DEPARTMENT
 226 MIDDLE AVE. ELYRIA, OH

SURVEYED BY: C.T. BIGGS

CLOSURE: 1: 9,832

MAP PAGE(S): 11-00-097

APPROVED BY: RRM DATE: 1-15-19

SCALE: 1" = 75 PRIOR INSTRUMENT: 20170656353