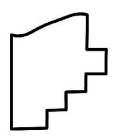
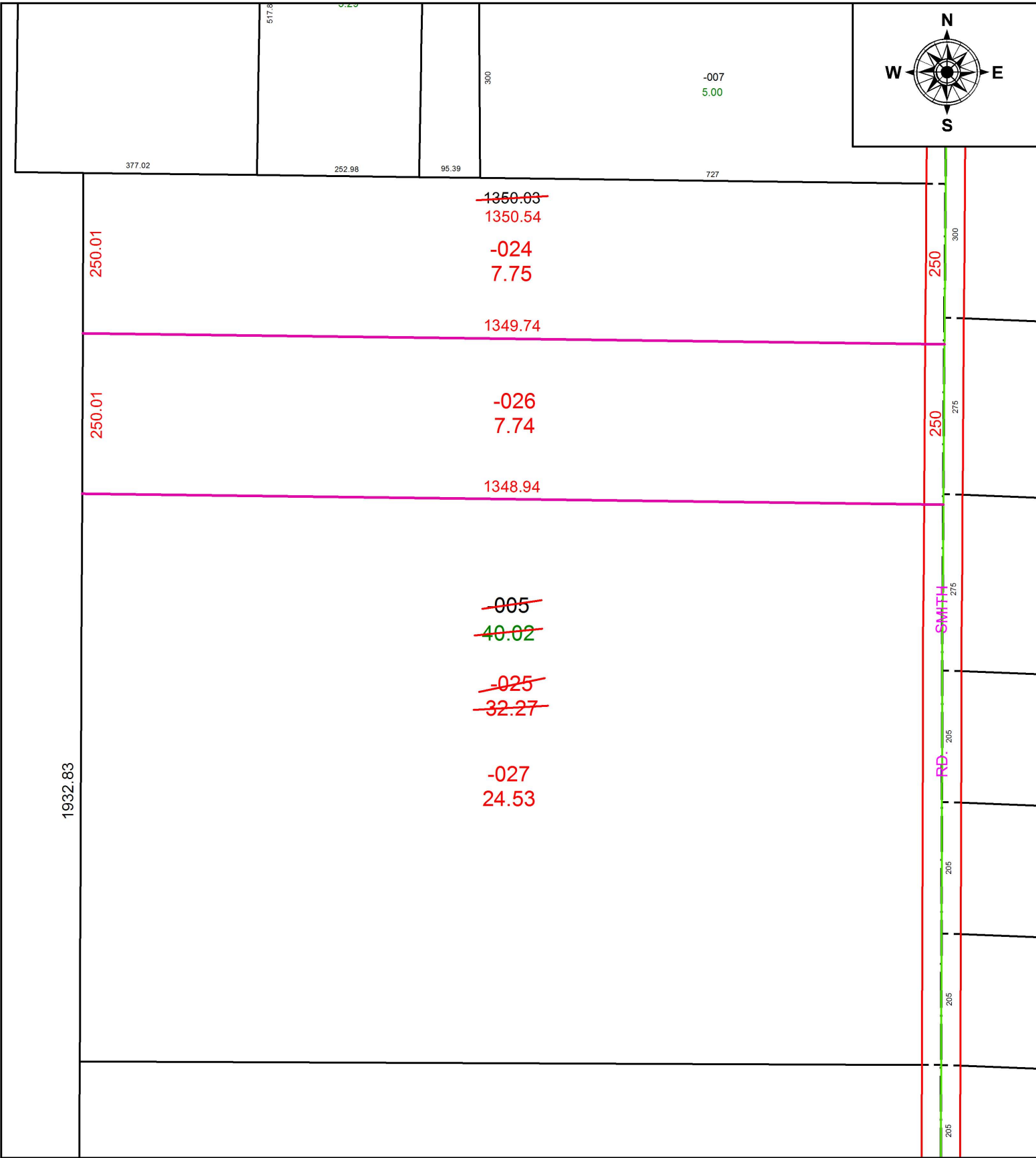


PARENT PARCEL: 18-00-012-000-005
 CHILD PARCEL: 18-00-012-000-024 THRU -027
 STARTING POINT: INTERSECTION OF C/L OF JONES RD. AND C/L OF SMITH RD.

19-04026



SPLITS/DEEDS PROCESSED
 LORAIN COUNTY TAX MAP DEPARTMENT
 226 MIDDLE AVE. ELYRIA, OH

SURVEYED BY: RICHARD D. CARLSON
 CLOSURE: 1:976,697
 MAP PAGE(S): 18-00-012
 APPROVED BY: RRM DATE: 10-2-19
 SCALE: 1" = 200 PRIOR INSTRUMENT: 20180698649