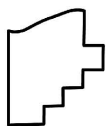
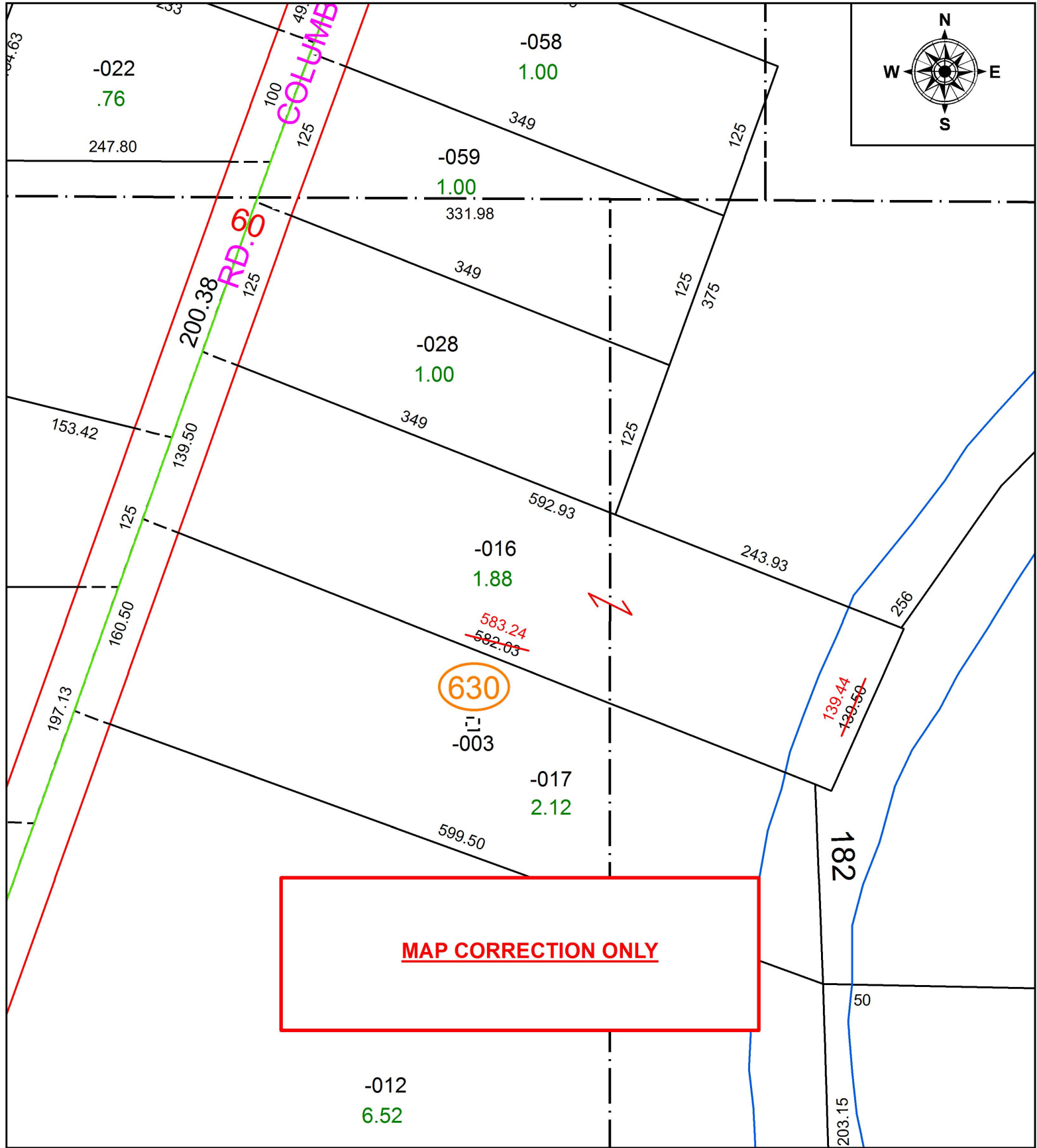


PARENT PARCEL: 12-00-043-000-016

CHILD PARCEL:

STARTING POINT: INTERSECTION OF C/L OF WEST RIVER RD. AND C/L OF OSBORNE RD.

19-04025-D



SPLITS/DEEDS PROCESSED
 LORAIN COUNTY TAX MAP DEPARTMENT
 226 MIDDLE AVE. ELYRIA, OH

SURVEYED BY: SEAN A. BOLAND

CLOSURE: 1:255,448

MAP PAGE(S): 12-00-043

APPROVED BY: RRM DATE: 1-15-19

SCALE: 1" = 100 PRIOR INSTRUMENT: 20150564552