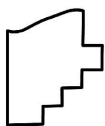
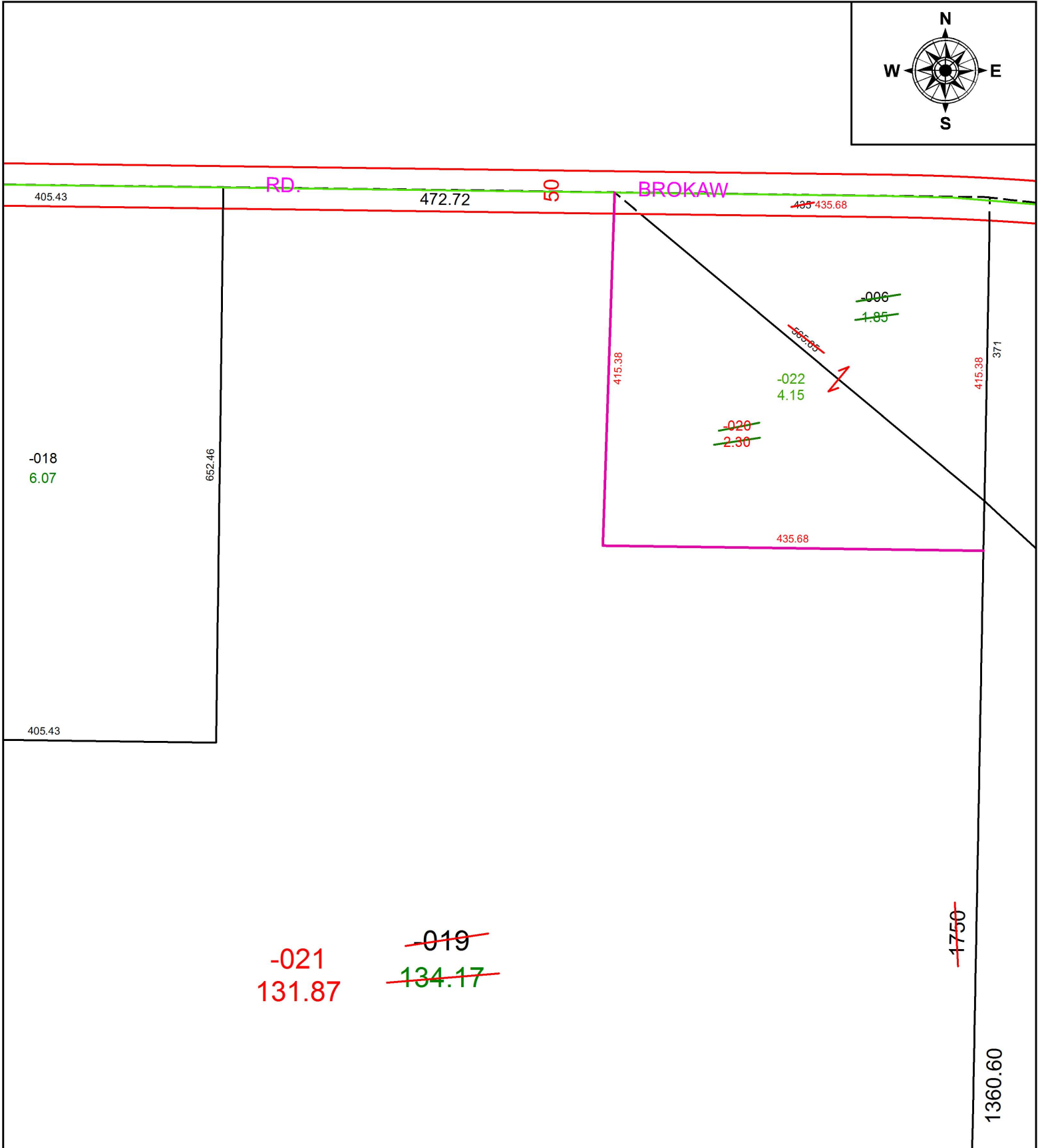
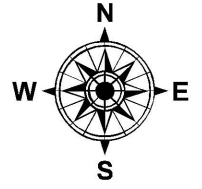


PARENT PARCEL: 11-00-012-000-006, -019

CHILD PARCEL: 11-00-012-000-020 THRU -022

STARTING POINT: INTERSECTION OF C/L OF DYE RD. AND C/L OF REED RD.

19-04023



SPLITS/DEEDS PROCESSED
 LORAIN COUNTY TAX MAP DEPARTMENT
 226 MIDDLE AVE. ELYRIA, OH

SURVEYED BY: JOSHUA S. RIEDY
 CLOSURE: 1:25,995
 MAP PAGE(S): 11-00-012
 APPROVED BY: RRM DATE: 9-23-19
 SCALE: 1" = 150 PRIOR INSTRUMENT: DV 905/954