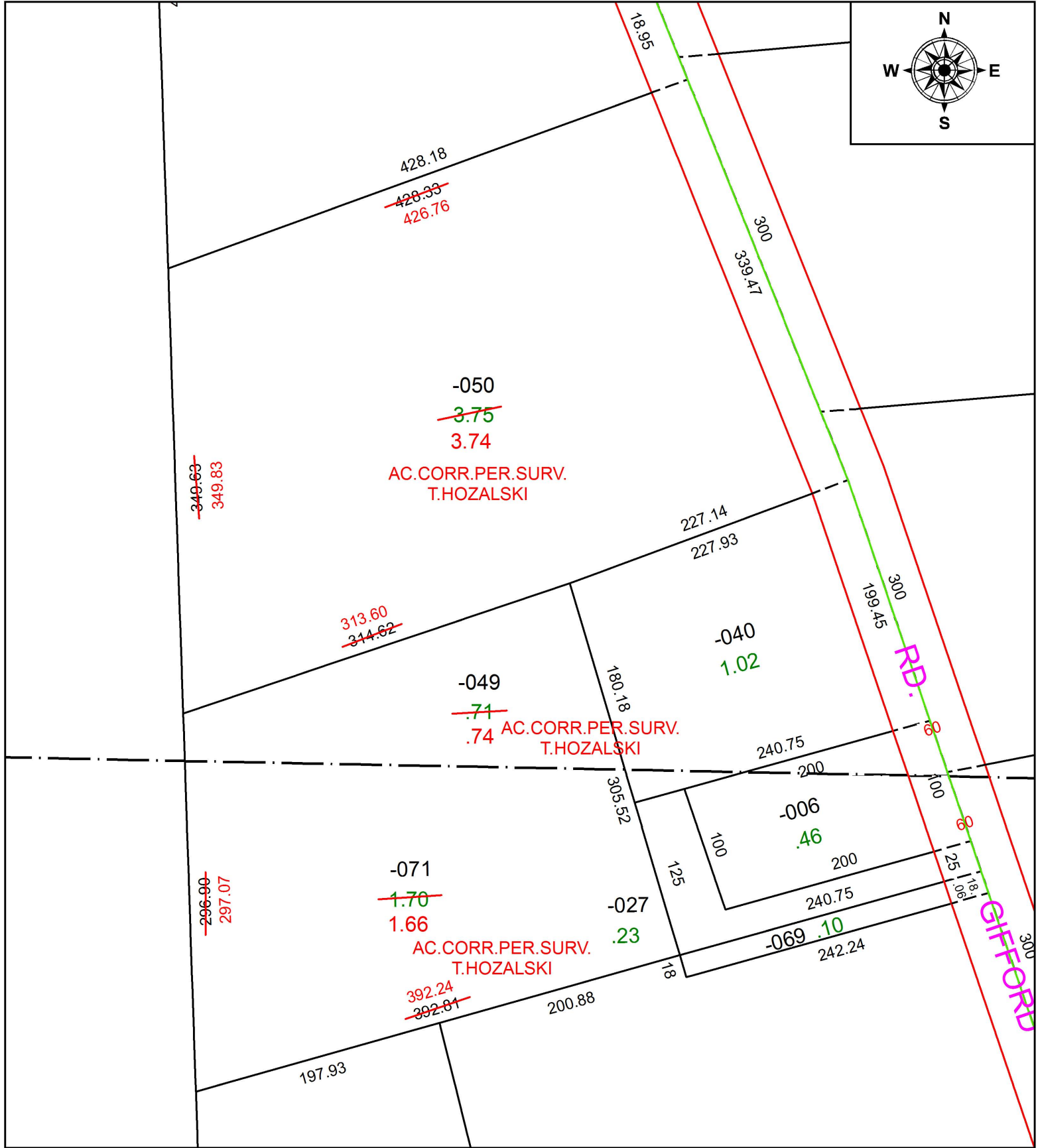


PARENT PARCEL: 08-00-086-000-049, -050, 08-00-091-000-071

CHILD PARCEL:

STARTING POINT: INTERSECTION OF C/L OF S.R. 113 AND C/L OF GIFFORD RD.

19-04201-C



SPLITS/DEEDS PROCESSED
LORAIN COUNTY TAX MAP DEPARTMENT
226 MIDDLE AVE. ELYRIA, OH

SURVEYED BY: TIMOTHY D. HOZALSKI
CLOSURE: 1:370,998
MAP PAGE(S): 8-00-086
APPROVED BY: RRM DATE: 10-1-19
SCALE: 1" = 100 PRIOR INSTRUMENT: 20190701114