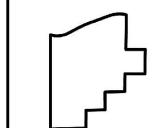
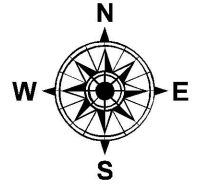
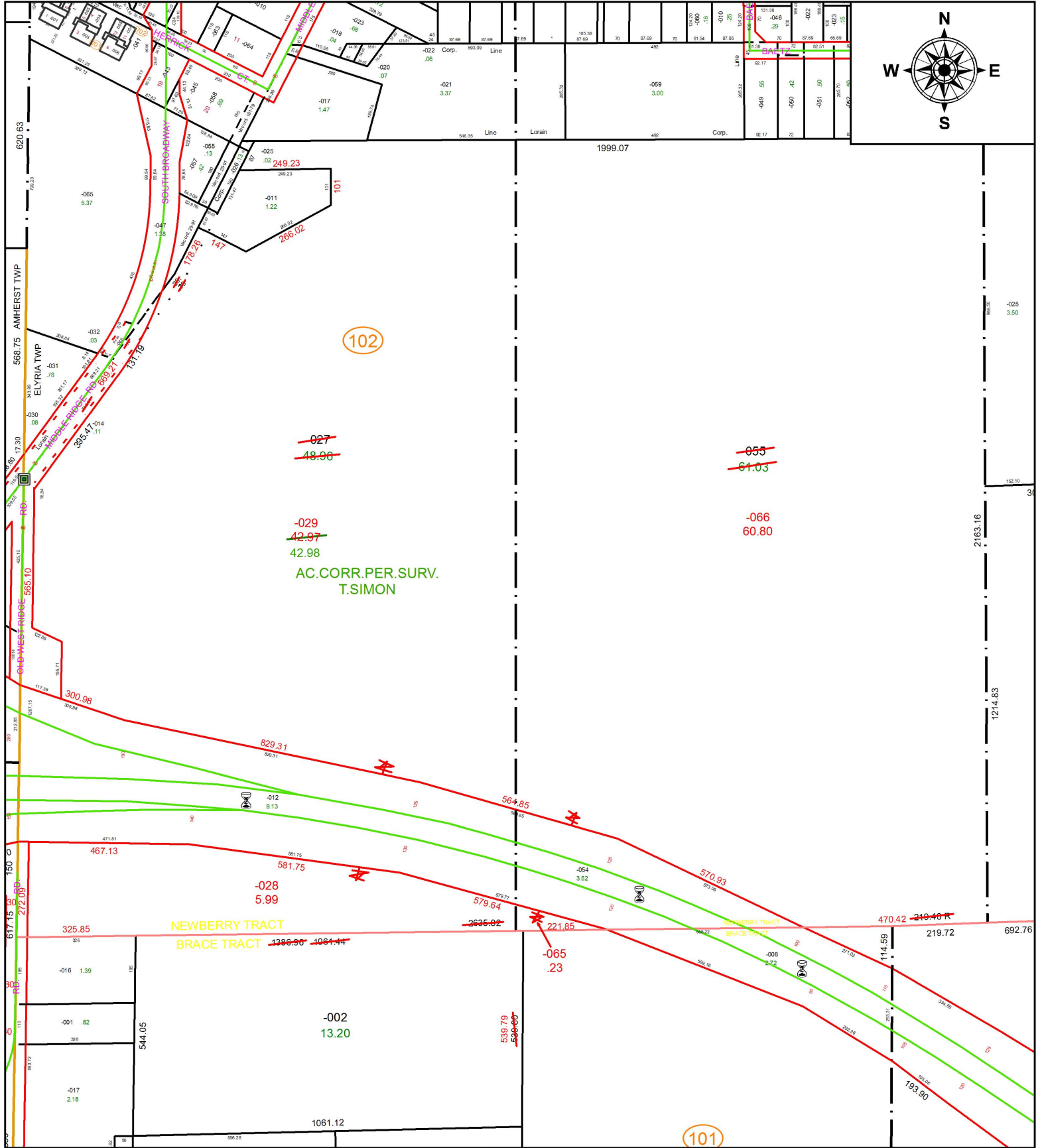


PARENT PARCEL: 06-21-001-102-027, 06-21-002-000-055, 06-23-001-101-002

CHILD PARCEL: 06-21-001-102-028, -029, 06-21-002-000-065, -066, 06-23-001-101-002

STARTING POINT: SOUTHWEST CORNER OF O.L.1, NEWBERRY TRACT

19-04019



SPLITS/DEEDS PROCESSED
 LORAIN COUNTY TAX MAP DEPARTMENT
 226 MIDDLE AVE. ELYRIA, OH

SURVEYED BY: THOMAS A. SIMON
 CLOSURE: 1:507,584
 MAP PAGE(S): 6-21-001
 APPROVED BY: RRM DATE: 9-16-19
 SCALE: 1" = 350 PRIOR INSTRUMENT: 20160590745