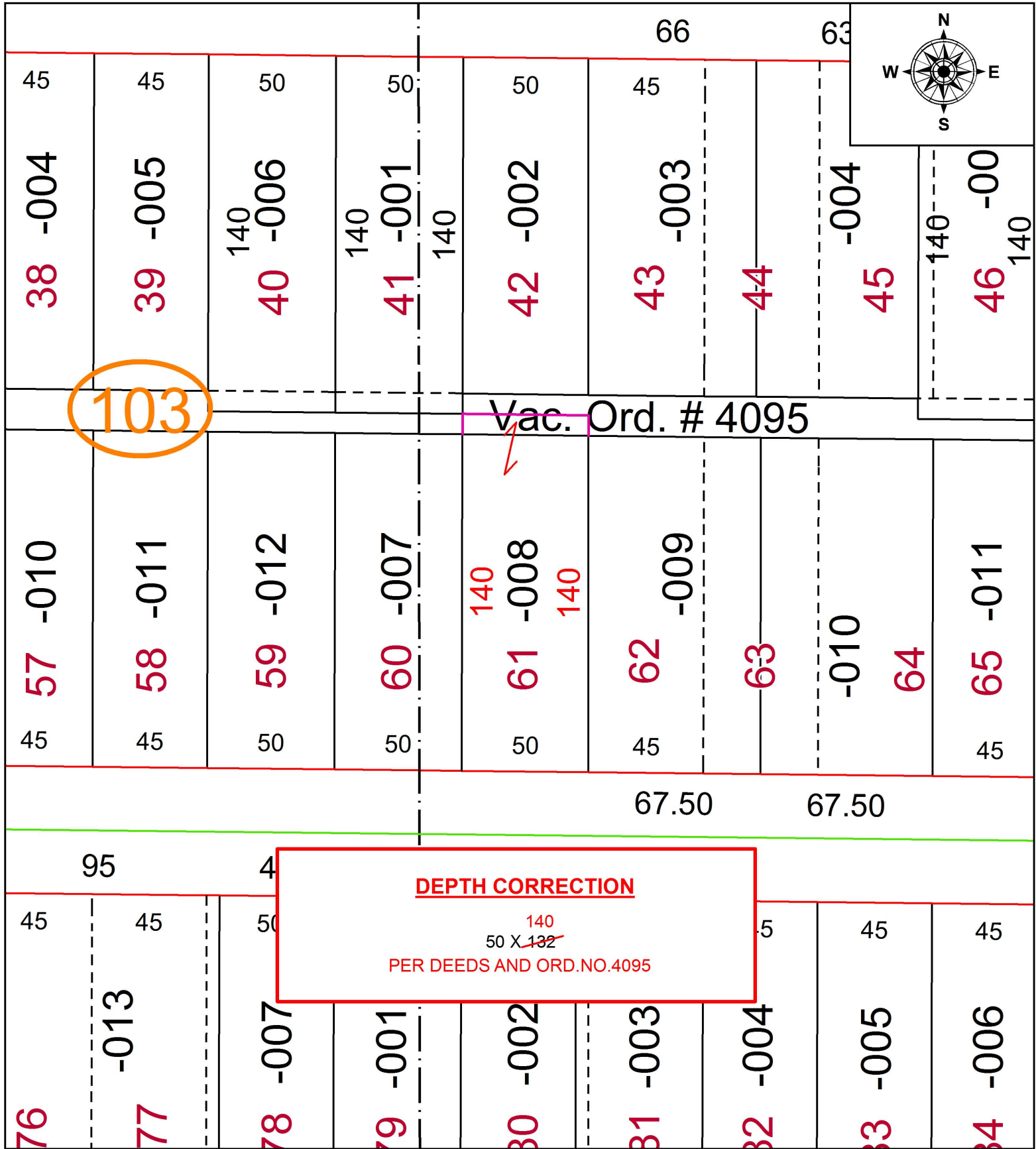


PARENT PARCEL: 06-25-036-103-008

CHILD PARCEL:

STARTING POINT:

19-04019-C



**SPLITS/DEEDS PROCESSED**  
 LORAIN COUNTY TAX MAP DEPARTMENT  
 226 MIDDLE AVE. ELYRIA, OH

SURVEYED BY: \_\_\_\_\_ N/A  
 CLOSURE: \_\_\_\_\_ N/A  
 MAP PAGE(S): \_\_\_\_\_ 6-25-036  
 APPROVED BY: \_\_\_\_\_ RRM DATE: \_\_\_\_\_ 1-10-19  
 SCALE: \_\_\_\_\_ 1" = 50 \_\_\_\_\_ PRIOR INSTRUMENT: \_\_\_\_\_ 20190700498