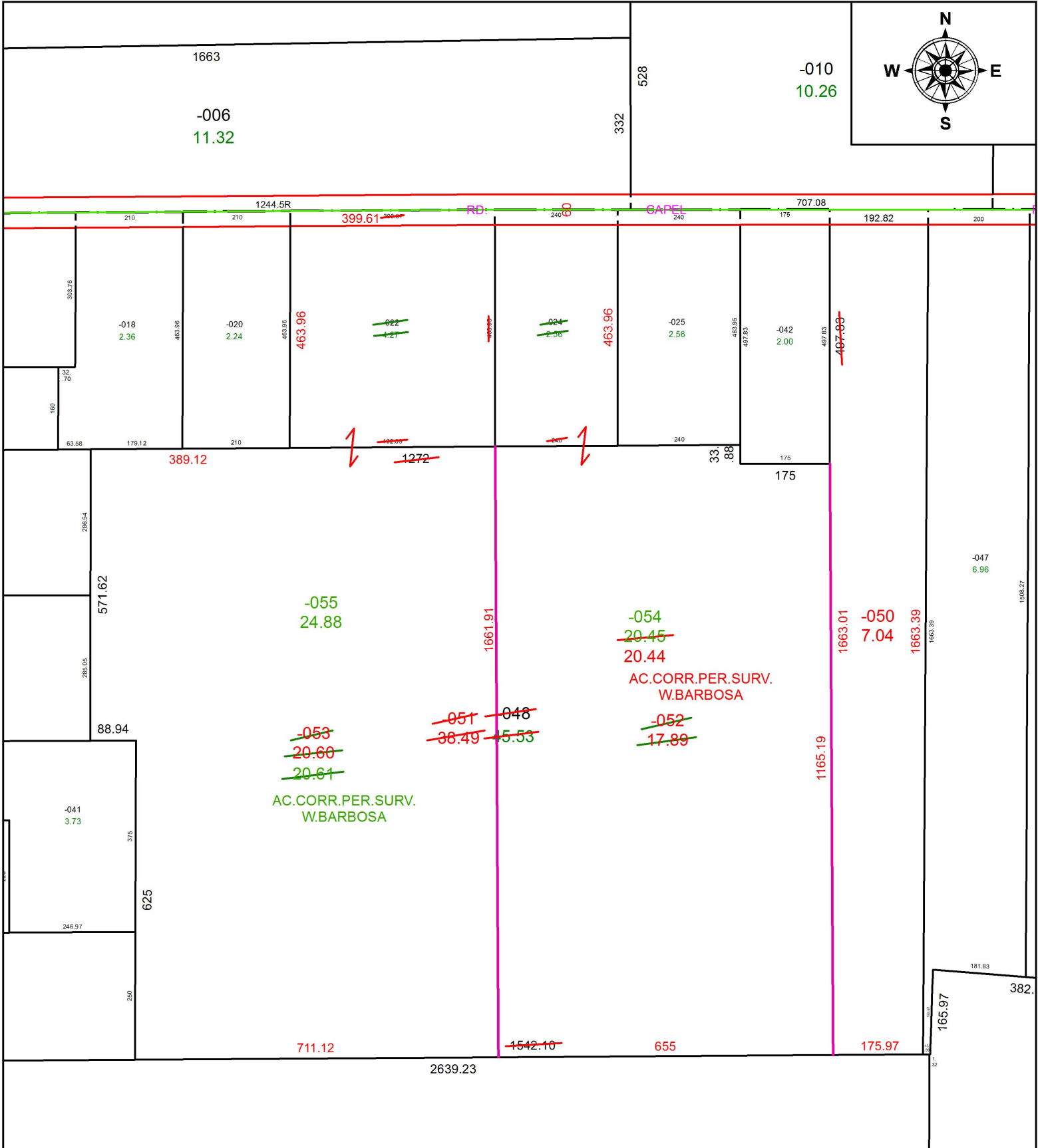


PARENT PARCEL: 11-00-003-000-022, -024, -048

CHILD PARCEL: 11-00-003-000-050 THRU -055

STARTING POINT: INTERSECTION OF C/L OF CAPEL RD. AND C/L OF COWLEY RD.

19-04018



SPLITS/DEEDS PROCESSED
 LORAIN COUNTY TAX MAP DEPARTMENT
 226 MIDDLE AVE. ELYRIA, OH

SURVEYED BY: WILFREDO BARBOSA
 CLOSURE: 1:468,362
 MAP PAGE(S): 11-00-003
 APPROVED BY: RRM DATE: 9-10-19
 SCALE: 1" = 250 PRIOR INSTRUMENT: 20180678616