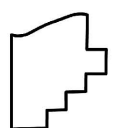
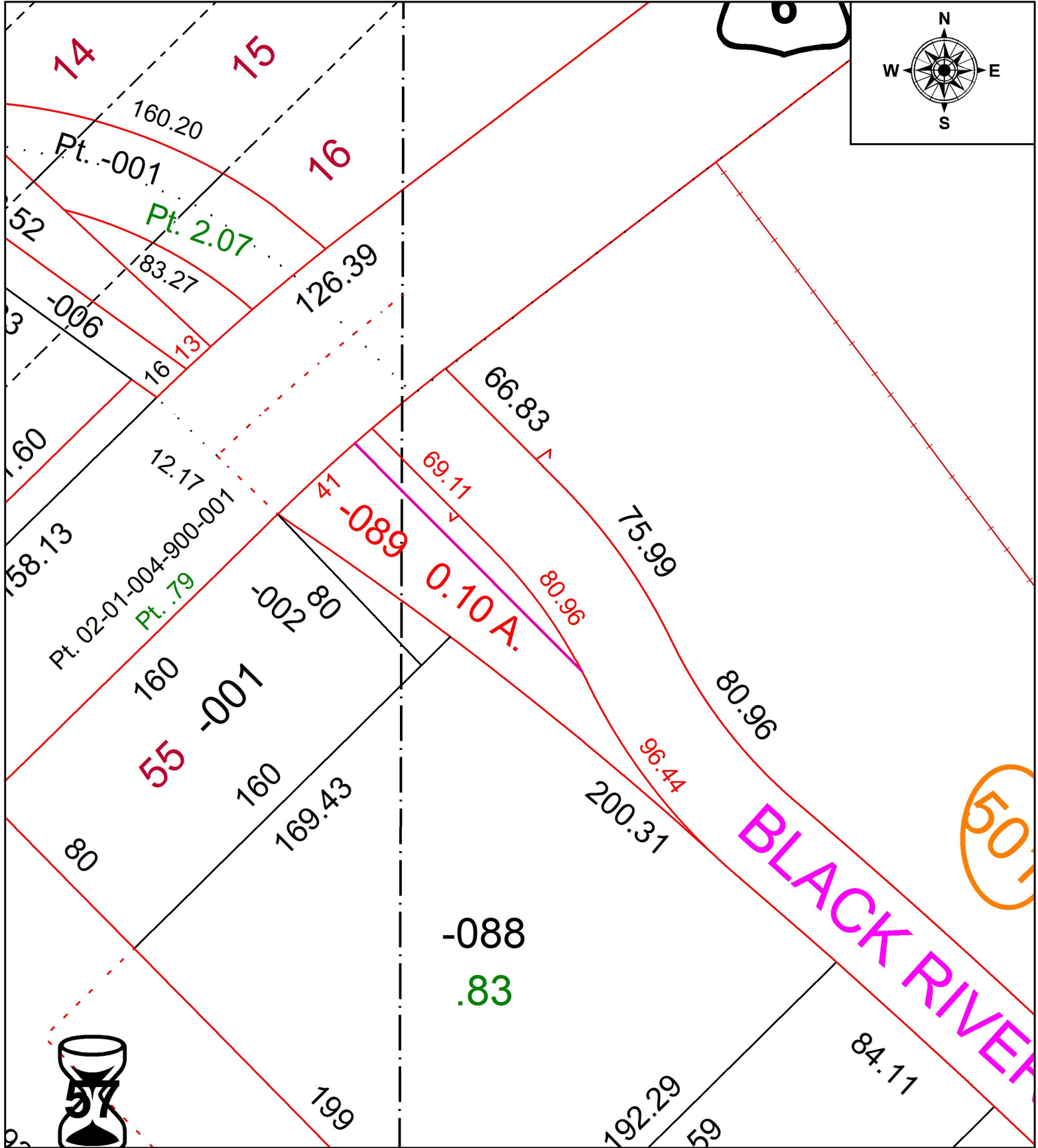


PARENT PARCEL: ADD TO DUPLICATE PER DV 217/551

CHILD PARCEL: 02-01-004-101-089 0.10 A. CALC.

STARTING POINT: WEST LINE OF BROADWAY & SOUTH LINE OF E. ERIE

19-04017-A



**SPLITS/DEEDS PROCESSED**  
 LORAIN COUNTY TAX MAP DEPARTMENT  
 226 MIDDLE AVE. ELYRIA, OH

SURVEYED BY: NA  
 CLOSURE: NA  
 MAP PAGE(S): 02-01-004  
 APPROVED BY: TJS DATE: 1/9/19  
 SCALE: 1" = 50' PRIOR INSTRUMENT: DV 217/551