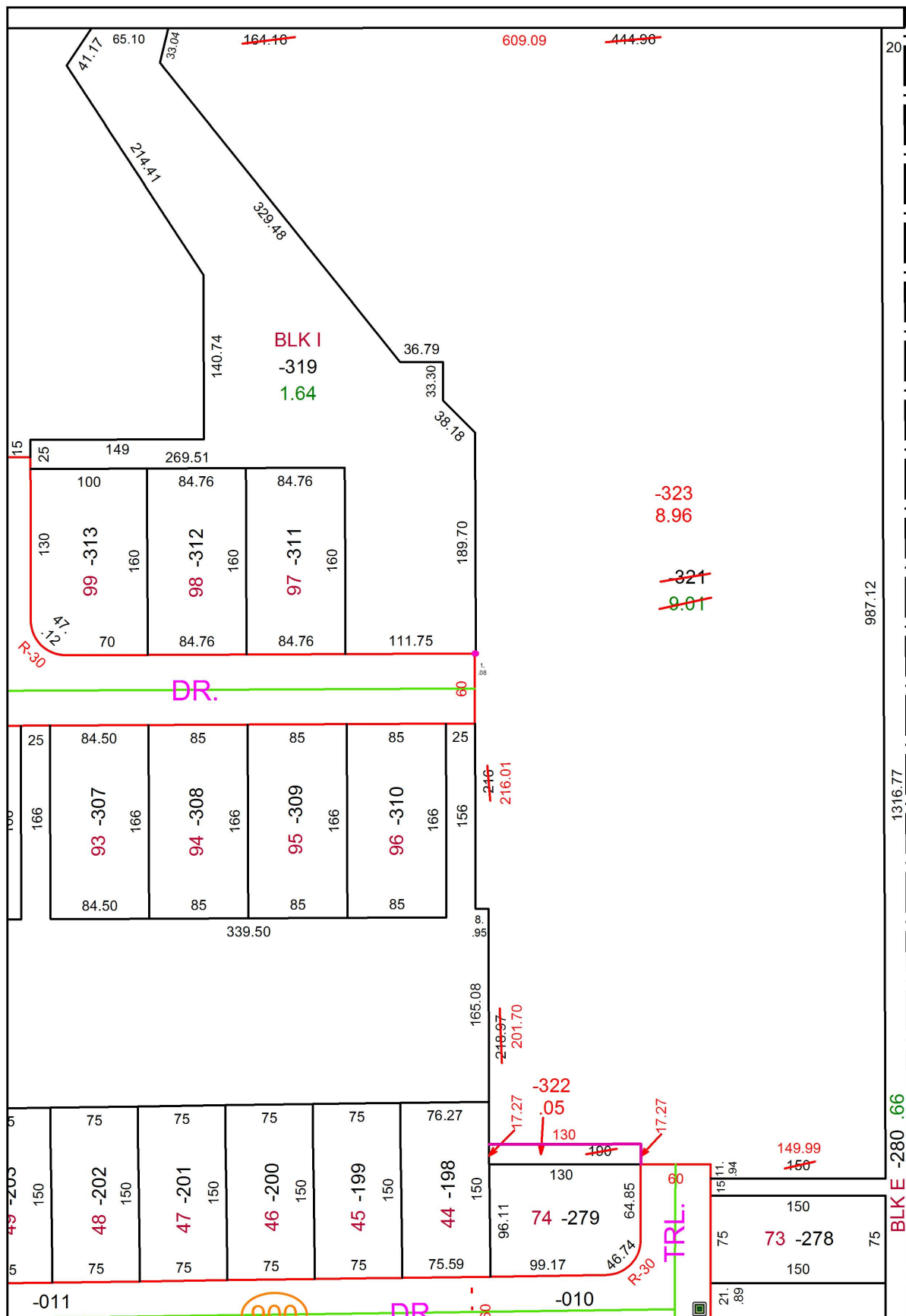
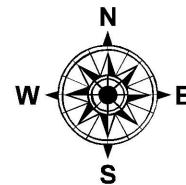


PARENT PARCEL: 11-00-098-000-279, -321

CHILD PARCEL: 11-00-098-000-279, -322, -323

STARTING POINT: NORTHWEST CORNER OF S/L 74 IN BARRINGTON PARK SUB. NO.6

19-04016



BLK I
-319
1.64

-323
8.96

~~-321~~
~~9.01~~

~~-246~~
216.01

~~-248.97~~
201.70

-322
.05

149.99
~~150~~

SPLITS/DEEDS PROCESSED
LORAIN COUNTY TAX MAP DEPARTMENT
226 MIDDLE AVE. ELYRIA, OH

SURVEYED BY: THOMAS A. SIMON
CLOSURE: 1:13.983
MAP PAGE(S): 11-00-098
APPROVED BY: RRM DATE: 10-16-19
SCALE: 1" = 125 PRIOR INSTRUMENT: 20060148470