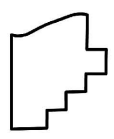
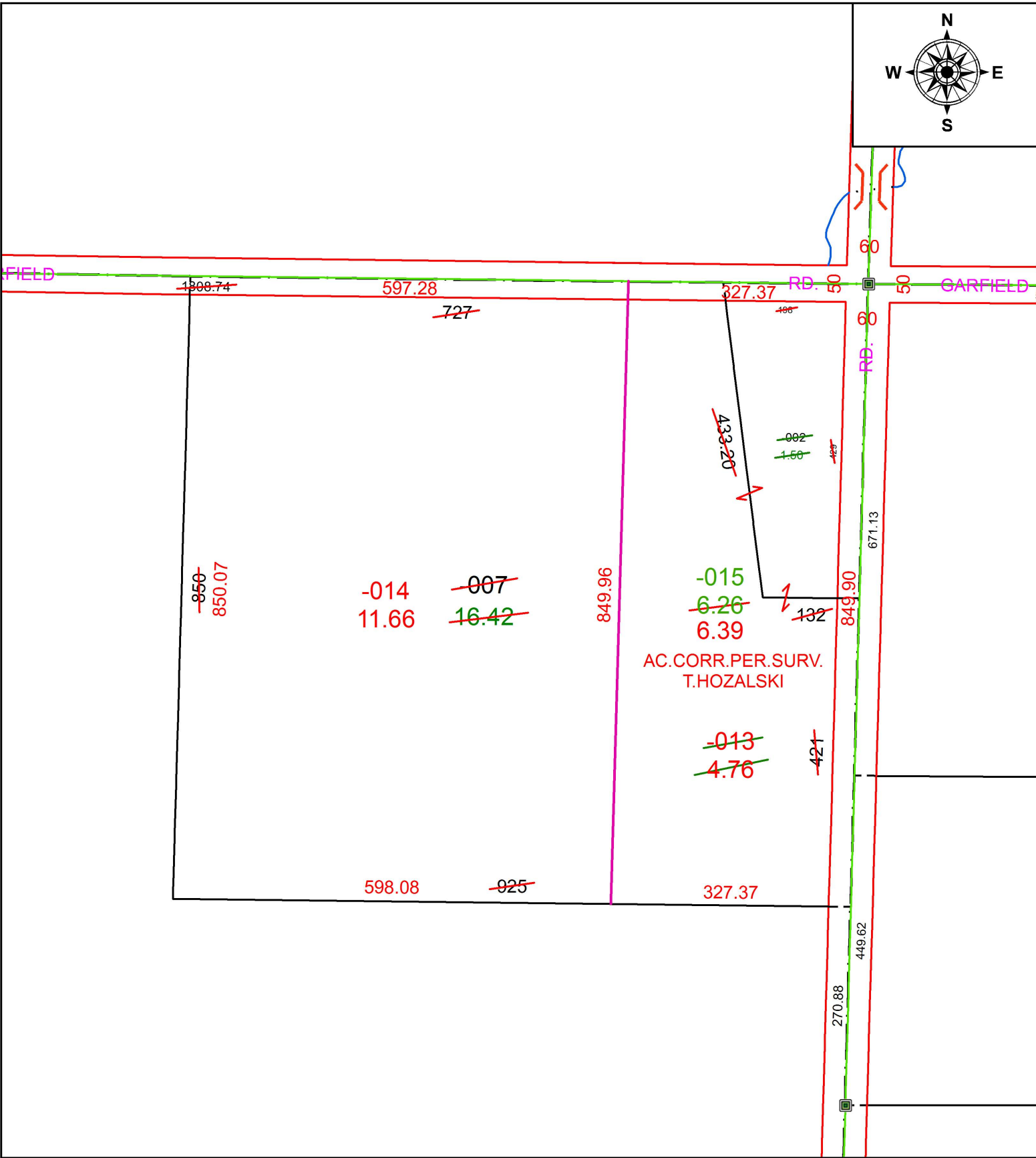
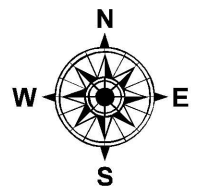


PARENT PARCEL: 09-00-051-000-002, -007
 CHILD PARCEL: 09-00-051-000-013 THRU -015
 STARTING POINT: INTERSECTION OF C/L OF GARFIELD RD. AND C/L OF QUARRY RD.

19-04014



SPLITS/DEEDS PROCESSED
 LORAIN COUNTY TAX MAP DEPARTMENT
 226 MIDDLE AVE. ELYRIA, OH

SURVEYED BY: TIMOTHY D. HOZALSKI
 CLOSURE: 1:651,184
 MAP PAGE(S): 9-00-051
 APPROVED BY: RRM DATE: 9-3-19
 SCALE: 1" = 175 PRIOR INSTRUMENT: 20190717180