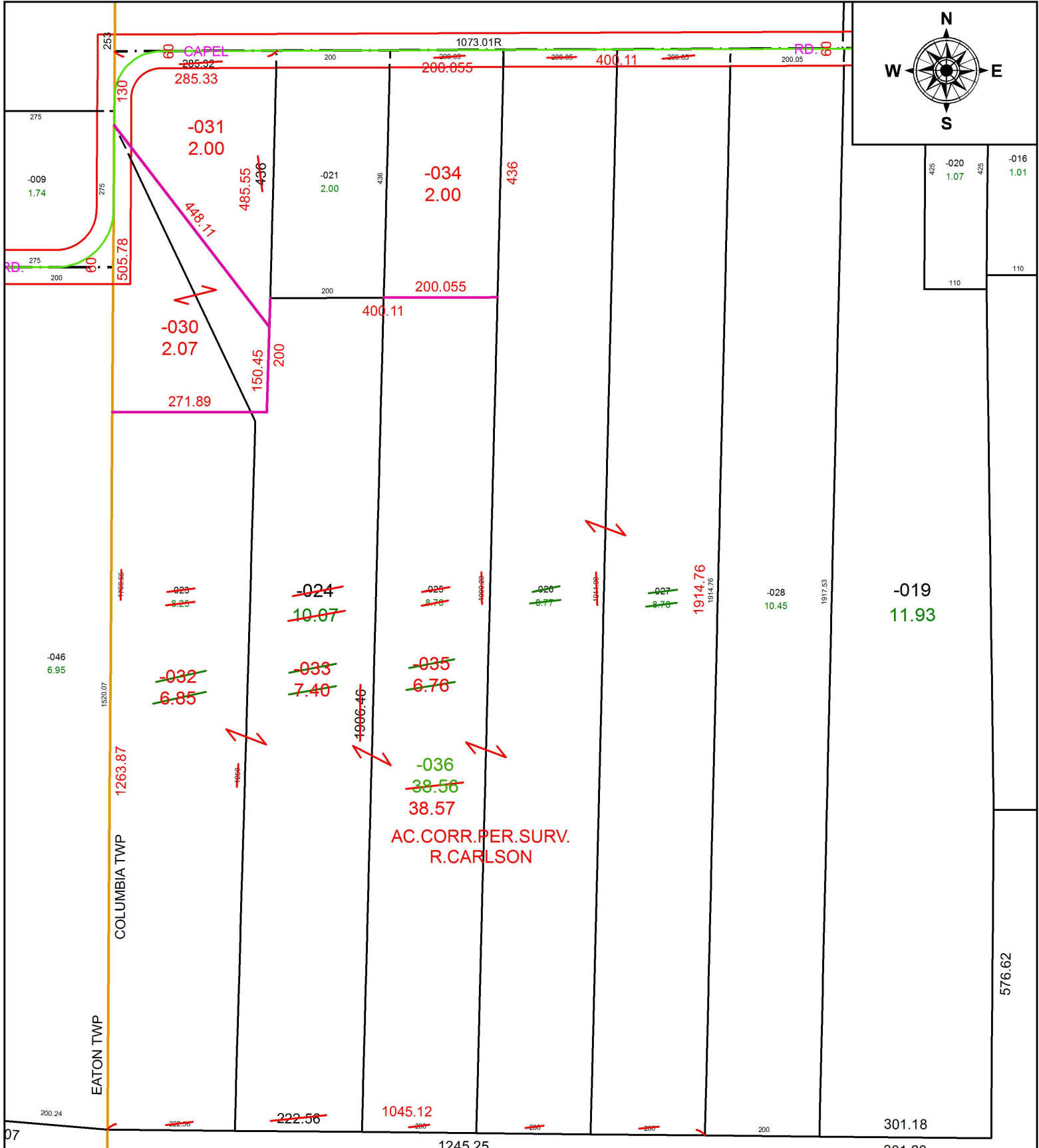


PARENT PARCEL: 12-00-093-000-023 THRU -027

CHILD PARCEL: 12-00-093-000-030 THRU -036

STARTING POINT: NORTHWEST CORNER OF O.L.93

19-04013



SPLITS/DEEDS PROCESSED
 LORAIN COUNTY TAX MAP DEPARTMENT
 226 MIDDLE AVE. ELYRIA, OH

SURVEYED BY: RICHARD D. CARLSON
CLOSURE: 1:299,202
MAP PAGE(S): 12-00-093
APPROVED BY: RRM **DATE:** 8-29-19
SCALE: 1" = 225' **PRIOR INSTRUMENT:** 20120398005