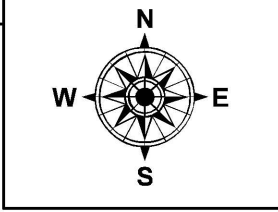
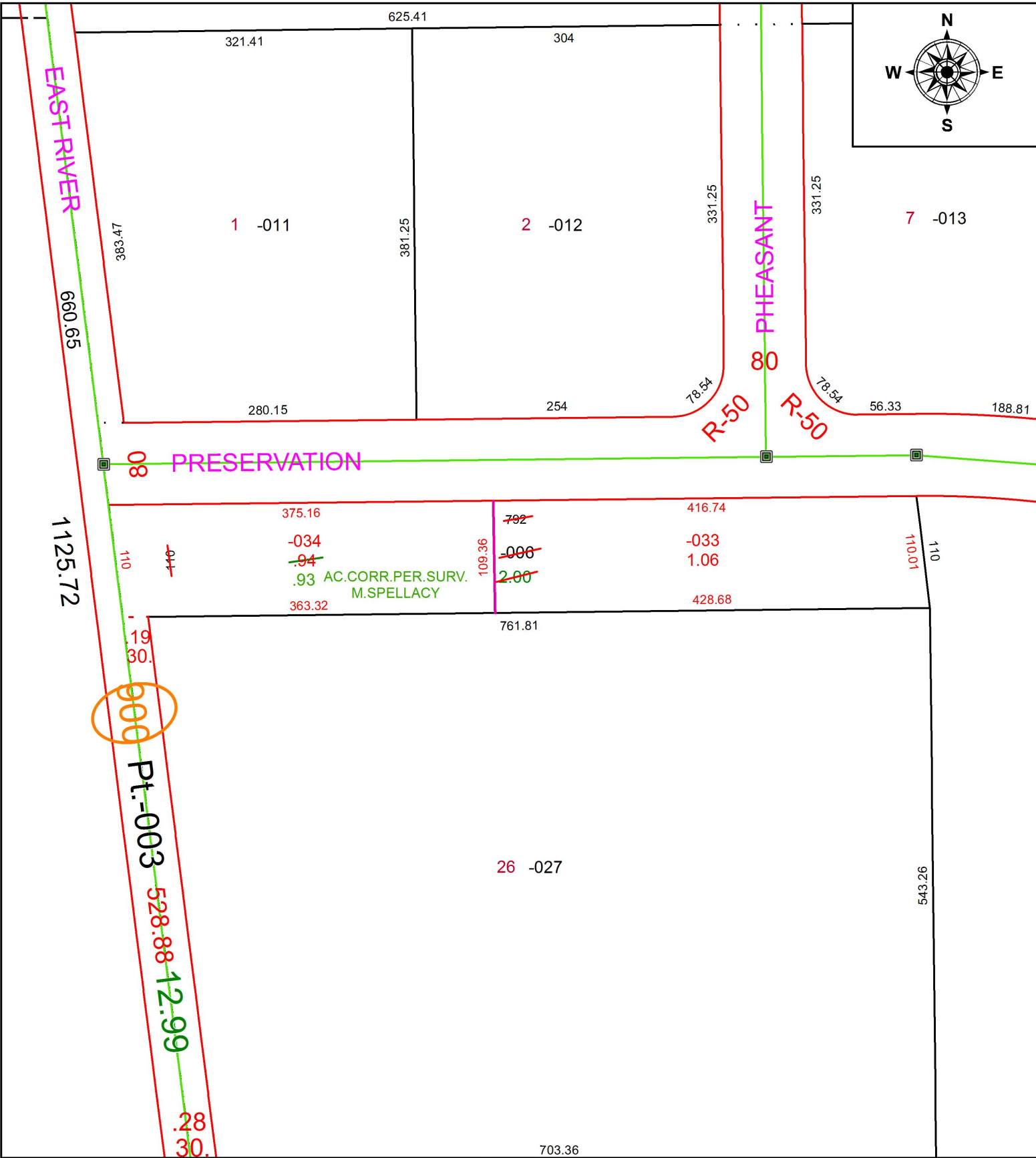


PARENT PARCEL: 03-00-069-000-006
 CHILD PARCEL: 03-00-069-000-033, -034
 STARTING POINT: INTERSECTION OF C/L OF PRESERVATION BLVD. AND C/L OF EAST RIVER RD.

19-04012



SPLITS/DEEDS PROCESSED
 LORAIN COUNTY TAX MAP DEPARTMENT
 226 MIDDLE AVE. ELYRIA, OH

SURVEYED BY: MICHAEL P. SPELLACY
 CLOSURE: 1:150,257
 MAP PAGE(S): 3-00-069
 APPROVED BY: RRM DATE: 8-28-19
 SCALE: 1" = 125 PRIOR INSTRUMENT: 19990633472