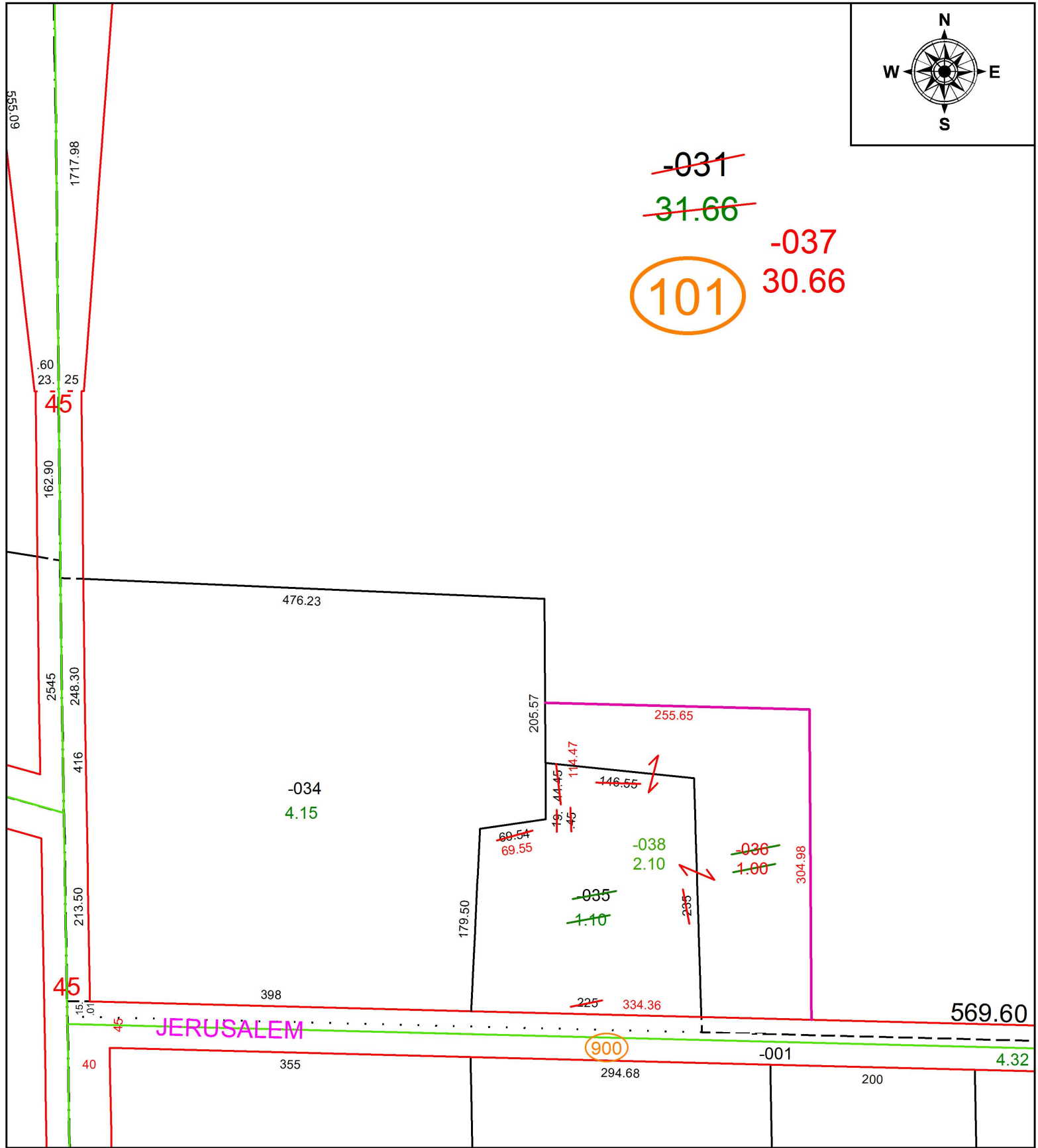
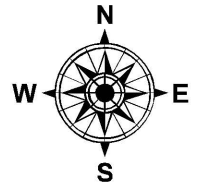


PARENT PARCEL: 01-00-028-101-031, -035

CHILD PARCEL: 01-00-028-101-036 THRU -038

STARTING POINT: INTERSECTION OF C/L OF SUNNYSIDE RD. AND C/L OF JERUSALEM RD.

19-04011



~~-031~~

~~31.66~~

-037

30.66

101

476.23

-034  
4.15

255.65

205.57

~~19.44~~  
~~45~~  
114.47

~~146.55~~

~~60.54~~  
69.55

-038  
2.10

~~036~~  
~~1.00~~

~~035~~  
1.10

304.98

179.50

398

~~225~~ 334.36

569.60

JERUSALEM

900

-001

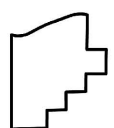
4.32

40

355

294.68

200



**SPLITS/DEEDS PROCESSED**  
LORAIN COUNTY TAX MAP DEPARTMENT  
226 MIDDLE AVE. ELYRIA, OH

SURVEYED BY: THOMAS A. SIMON  
CLOSURE: 1: 289,793  
MAP PAGE(S): 1-00-028  
APPROVED BY: RRM DATE: 8-28-19  
SCALE: 1" = 125 PRIOR INSTRUMENT: OR 1071/847