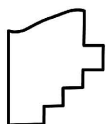
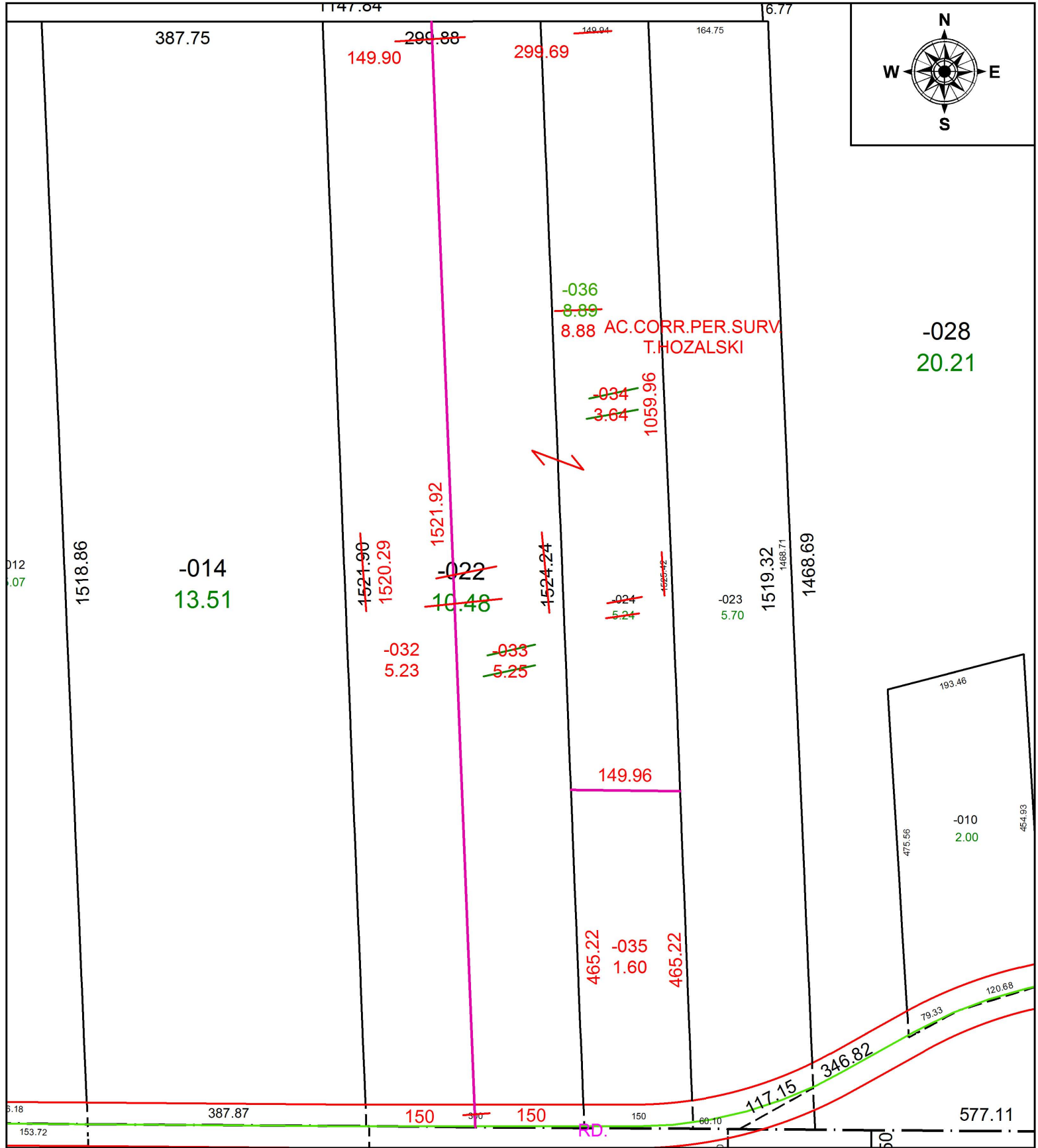


PARENT PARCEL: 01-00-065-000-022, -024

CHILD PARCEL: 01-00-065-000-032 THRU -036

STARTING POINT: INTERSECTION OF C/L OF DEAN RD. AND C/L OF SPERRY RD.

19-04010



SPLITS/DEEDS PROCESSED
LORAIN COUNTY TAX MAP DEPARTMENT
226 MIDDLE AVE. ELYRIA, OH

SURVEYED BY: TIMOTHY D. HOZALSKI

CLOSURE: 1:1,547,942

MAP PAGE(S): 1-00-065

APPROVED BY: RRM DATE: 8-27-19

SCALE: 1" = 175 PRIOR INSTRUMENT: 20090308116