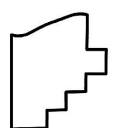
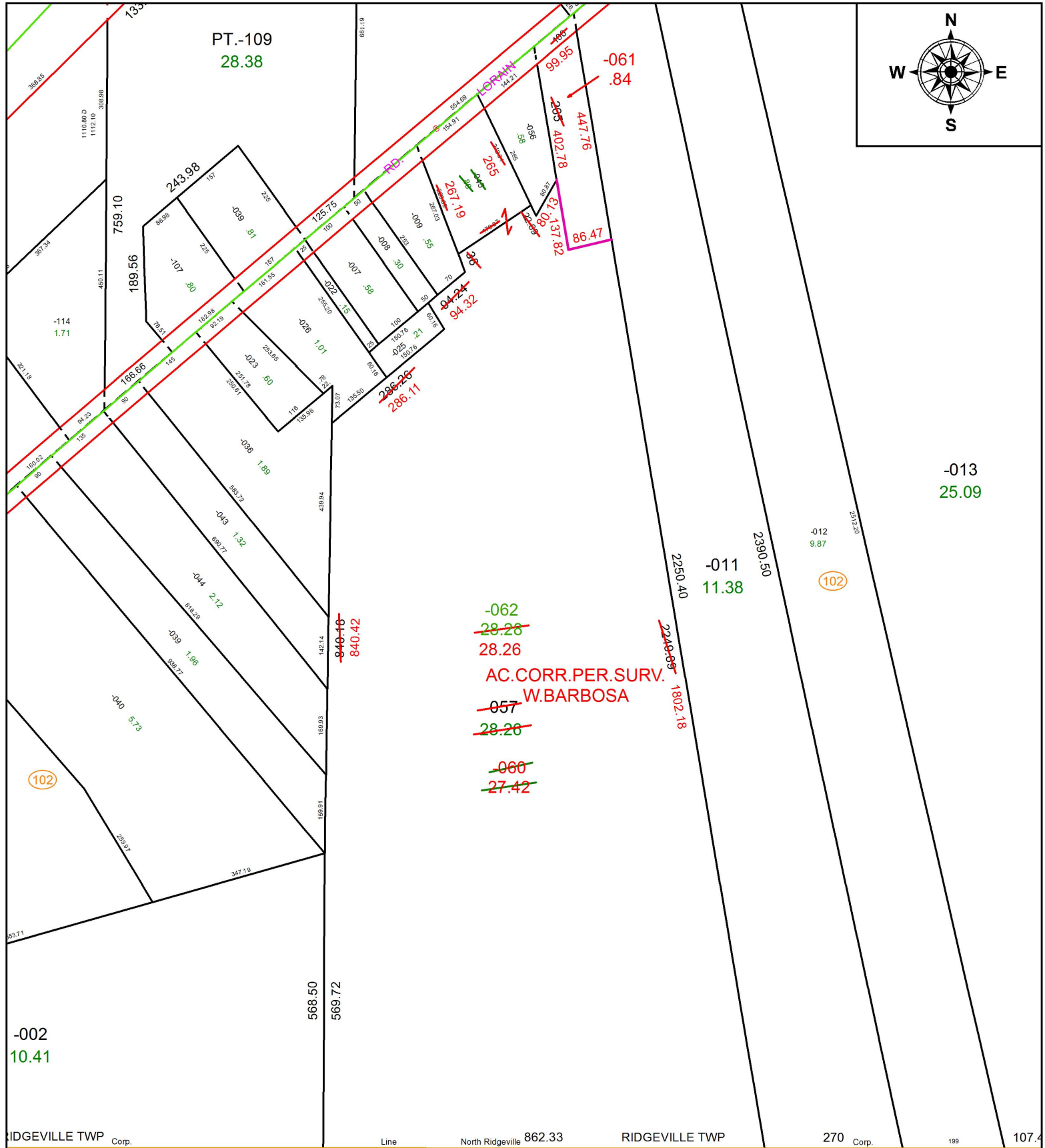
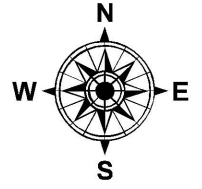


PARENT PARCEL: 07-00-024-102-045, -057

CHILD PARCEL: 07-00-024-102-060 THRU -062

STARTING POINT: INTERSECTION OF C/L OF BUTTERNUT RIDGE RD. AND C/L OF ISLAND RD.

19-04009



**SPLITS/DEEDS PROCESSED**  
LORAIN COUNTY TAX MAP DEPARTMENT  
226 MIDDLE AVE. ELYRIA, OH

SURVEYED BY: WILFREDO BARBOSA  
CLOSURE: 1:68,948  
MAP PAGE(S): 7-00-024  
APPROVED BY: RRM DATE: 8-27-19  
SCALE: 1" = 250 PRIOR INSTRUMENT: 20050061388