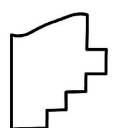
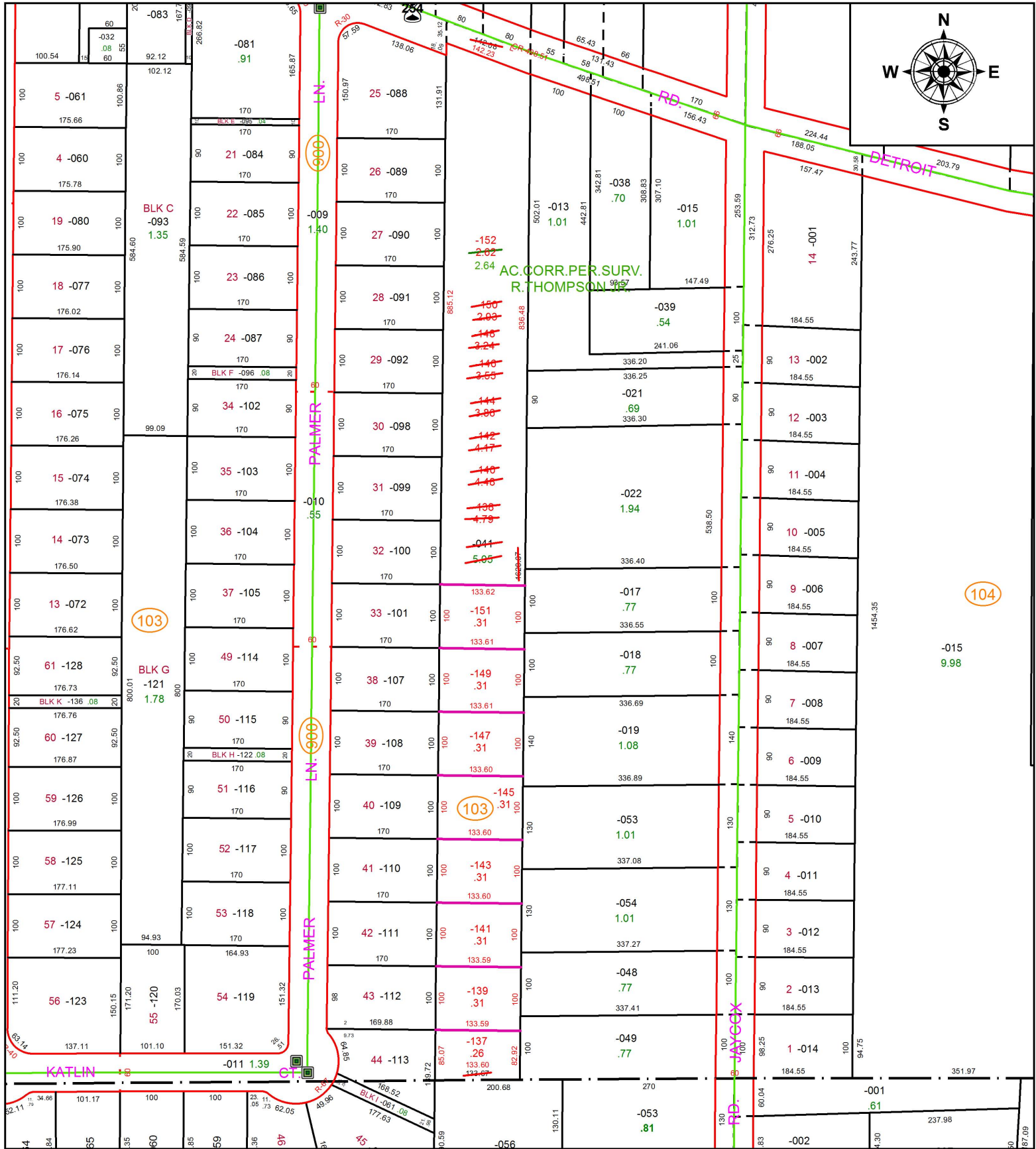


PARENT PARCEL: 04-00-022-103-041  
 CHILD PARCEL: 04-00-022-103-137 THRU -152  
 STARTING POINT: INTERSECTION OF C/L OF PALMER LN. AND C/L OF DETROIT RD.

19-04008



**SPLITS/DEEDS PROCESSED**  
 LORAIN COUNTY TAX MAP DEPARTMENT  
 226 MIDDLE AVE. ELYRIA, OH

SURVEYED BY: RICHARD A. THOMPSON JR.  
 CLOSURE: 1:84,439  
 MAP PAGE(S): 4-00-022  
 APPROVED BY: RRM DATE: 8-22-19  
 SCALE: 1" = 200 PRIOR INSTRUMENT: 2018066693