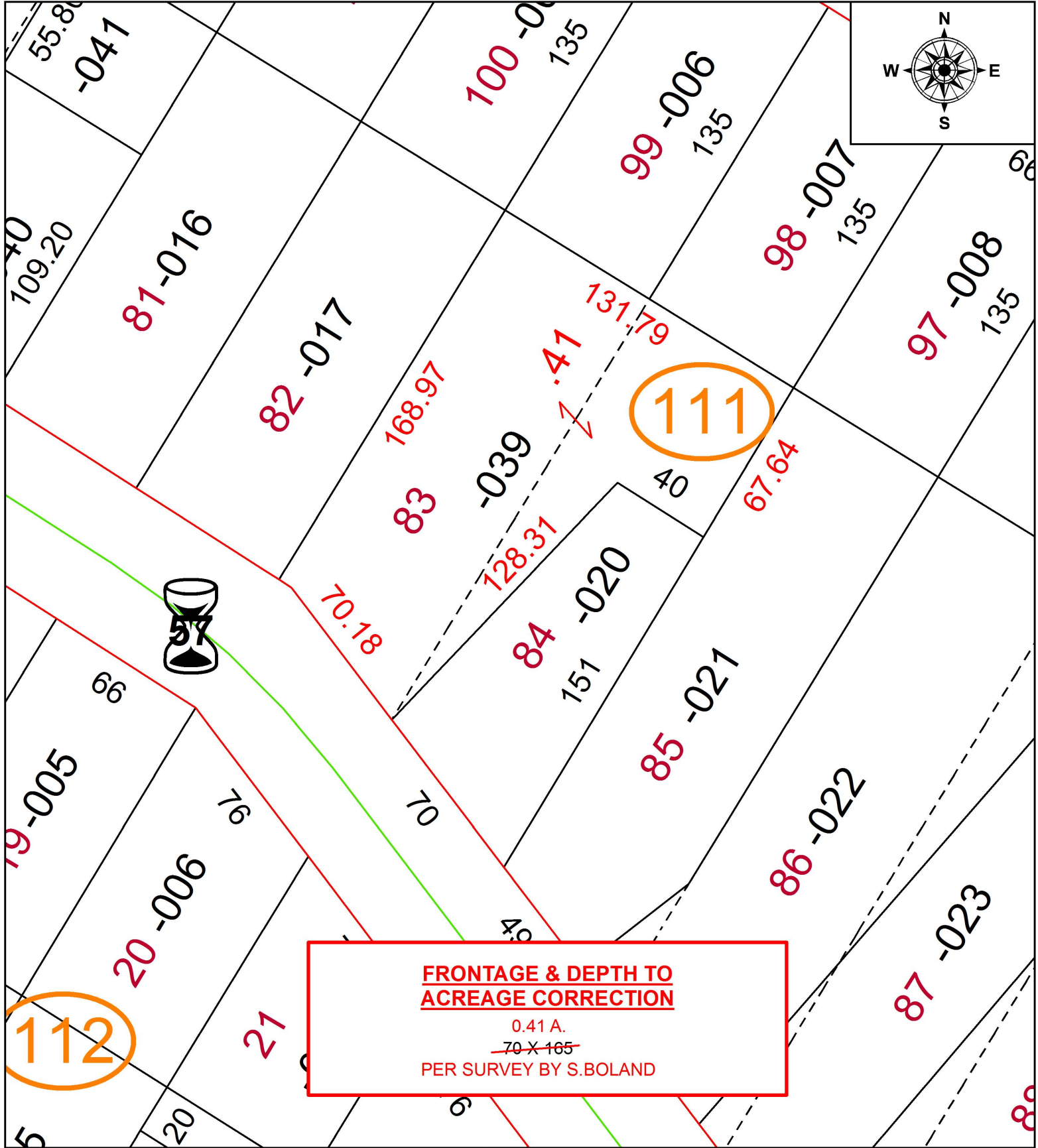


PARENT PARCEL: 16-00-001-111-039

CHILD PARCEL:

STARTING POINT: SOUTHWEST CORNER OF S/L 80 IN RAWSONVILLE

19-04007-D



**SPLITS/DEEDS PROCESSED**  
 LORAIN COUNTY TAX MAP DEPARTMENT  
 226 MIDDLE AVE. ELYRIA, OH

SURVEYED BY: SEAN A. BOLAND  
 CLOSURE: 1: 76,081  
 MAP PAGE(S): 16-00-001  
 APPROVED BY: RRM DATE: 1-3-19  
 SCALE: 1" = 50 PRIOR INSTRUMENT: 20170639586