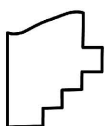
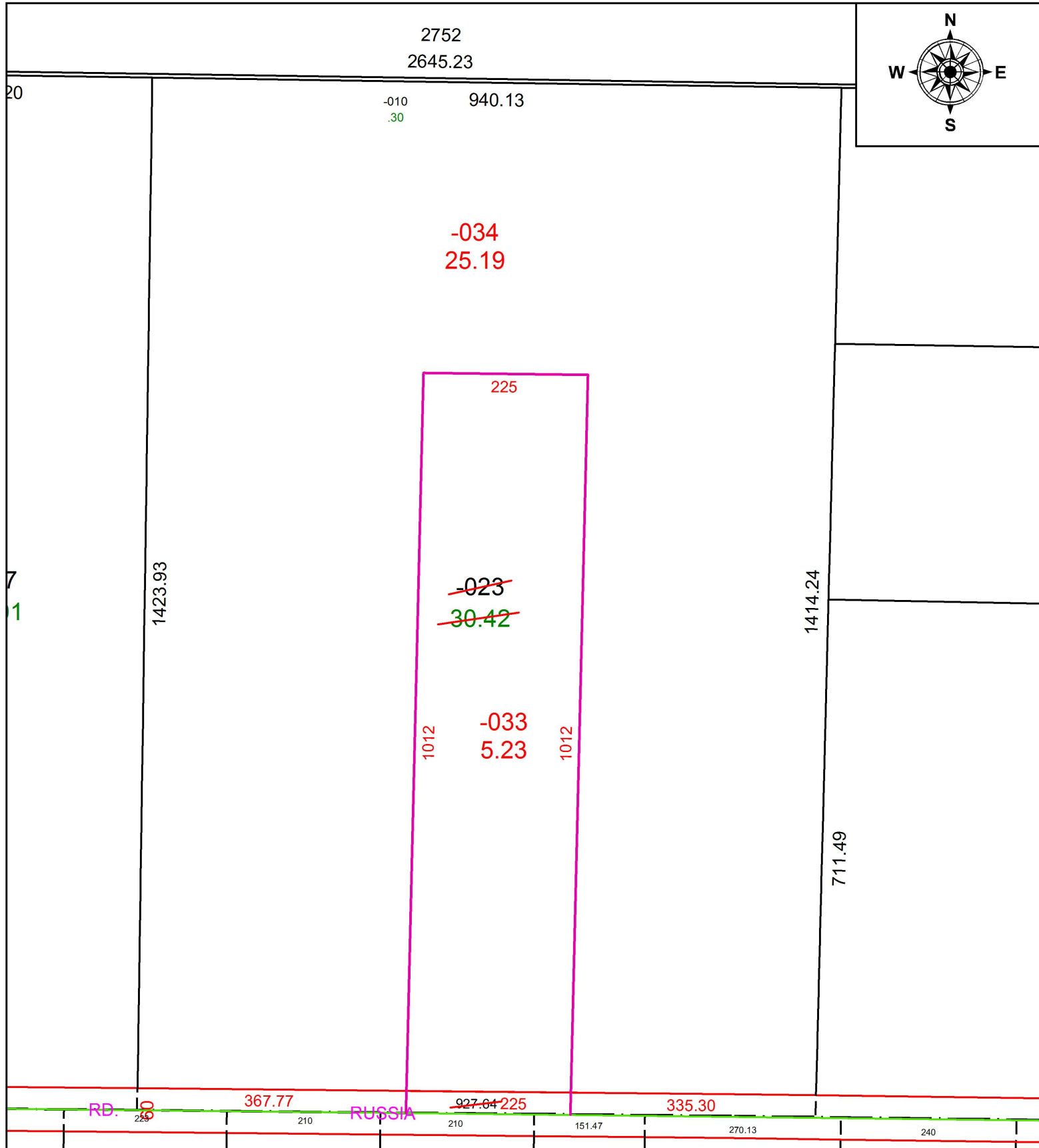


PARENT PARCEL: 09-00-011-000-023

CHILD PARCEL: 09-00-011-000-033, -034

STARTING POINT: INTERSECTION OF C/L OF RUSSIA RD. AND C/L OF QUARRY RD.

19-04004



SPLITS/DEEDS PROCESSED
 LORAIN COUNTY TAX MAP DEPARTMENT
 226 MIDDLE AVE. ELYRIA, OH

SURVEYED BY: PHILLIP A. ROSEBECK

CLOSURE: 1:2,267,996

MAP PAGE(S): 9-00-011

APPROVED BY: RRM DATE: 8-7-19

SCALE: 1" = 175 PRIOR INSTRUMENT: 20140518229