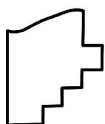
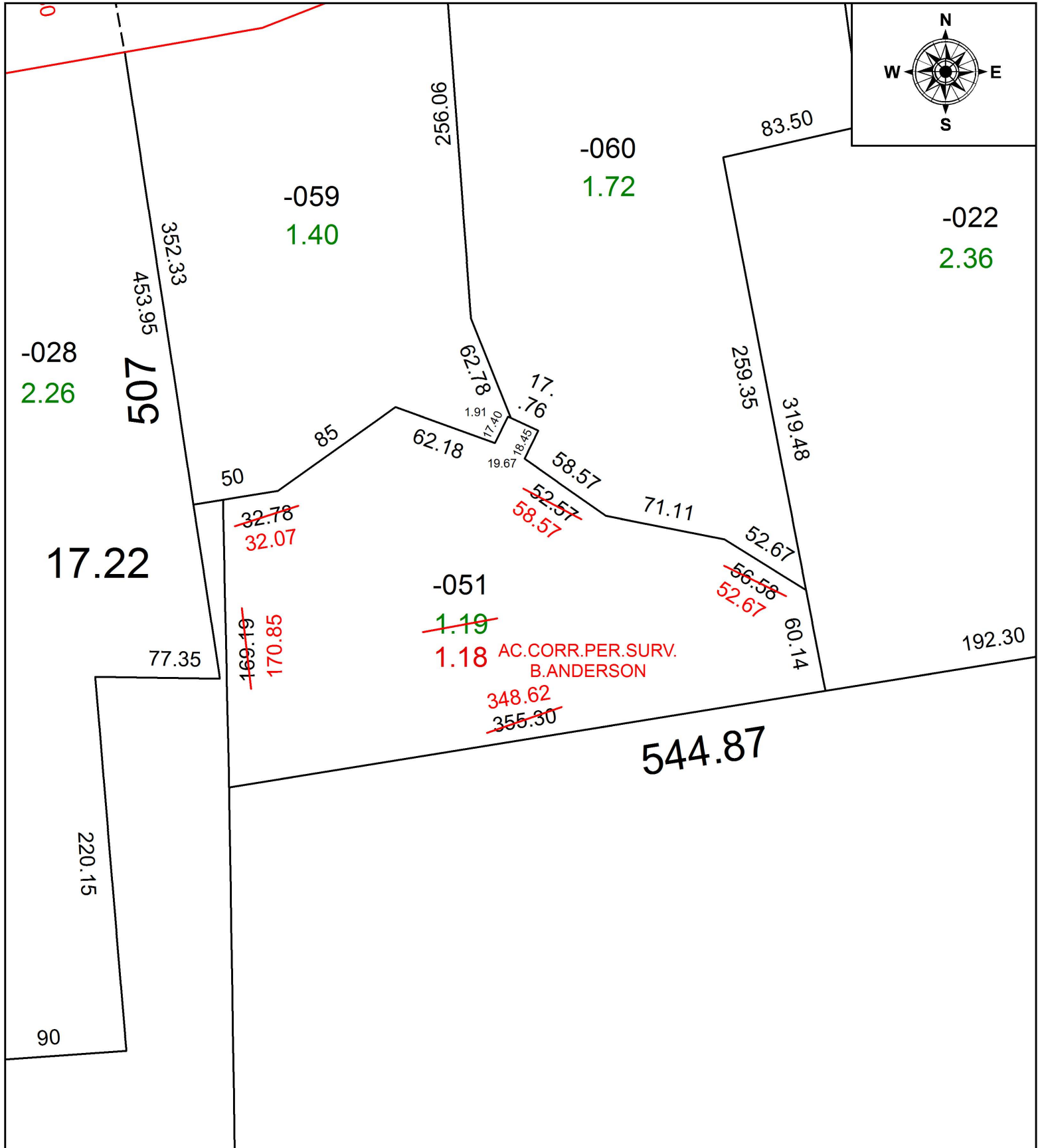


PARENT PARCEL: 01-00-006-102-051

CHILD PARCEL:

STARTING POINT: INTERSECTION OF C/L OF NICHOLSON AVE. AND C/L OF LIBERTY AVE.

18-04003-D



SPLITS/DEEDS PROCESSED
 LORAIN COUNTY TAX MAP DEPARTMENT
 226 MIDDLE AVE. ELYRIA, OH

SURVEYED BY: BRENT D. ANDERSON
 CLOSURE: 1:125,662
 MAP PAGE(S): 1-00-006
 APPROVED BY: RRM DATE: 12-21-18
 SCALE: 1" = 75' PRIOR INSTRUMENT: 20170653712