

PARENT PARCEL: 08-12-015-000-017, 08-12-016-000-018

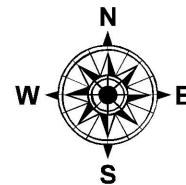
CHILD PARCEL: 08-12-015-000-025 THRU -027, 08-12-016-000-025 THRU -027

STARTING POINT: INTERSECTION OF C/L OF BECKER RD. AND C/L OF S.R. 511

19-04000

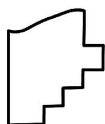
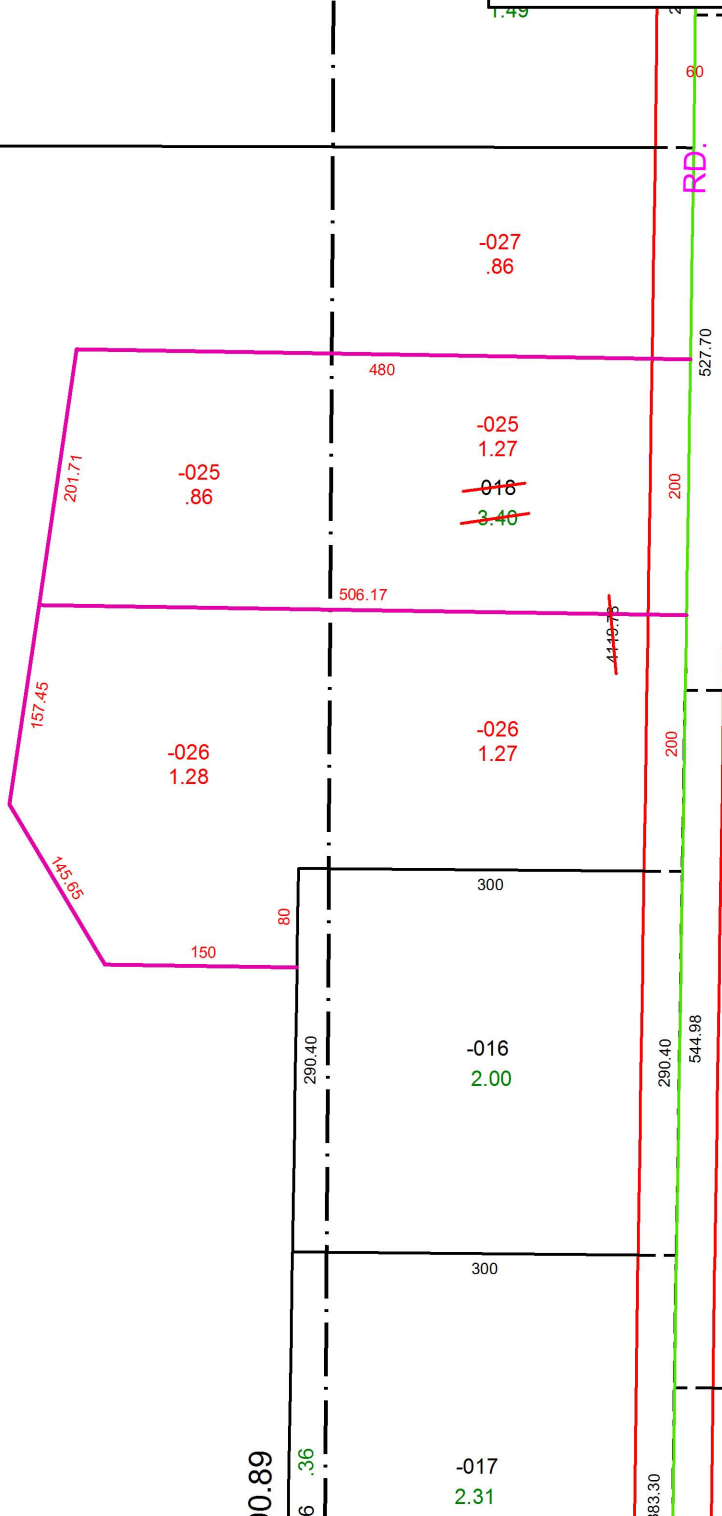
2148.23

2146.89



~~-017~~  
46.13

-027  
43.99



**SPLITS/DEEDS PROCESSED**  
LORAIN COUNTY TAX MAP DEPARTMENT  
226 MIDDLE AVE. ELYRIA, OH

SURVEYED BY: DAVID A. WILLIAMS  
CLOSURE: 1:241,420  
MAP PAGE(S): 8-12-016  
APPROVED BY: RRM DATE: 9-4-19  
SCALE: 1" = 150 PRIOR INSTRUMENT: 20120442417