

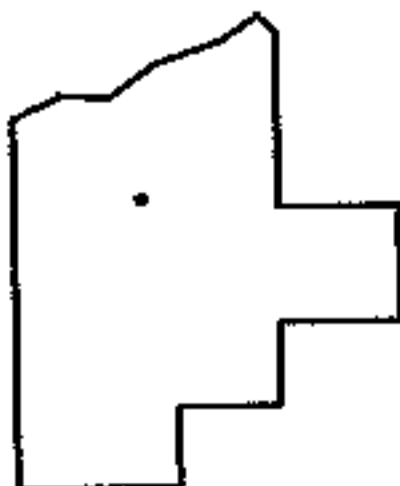
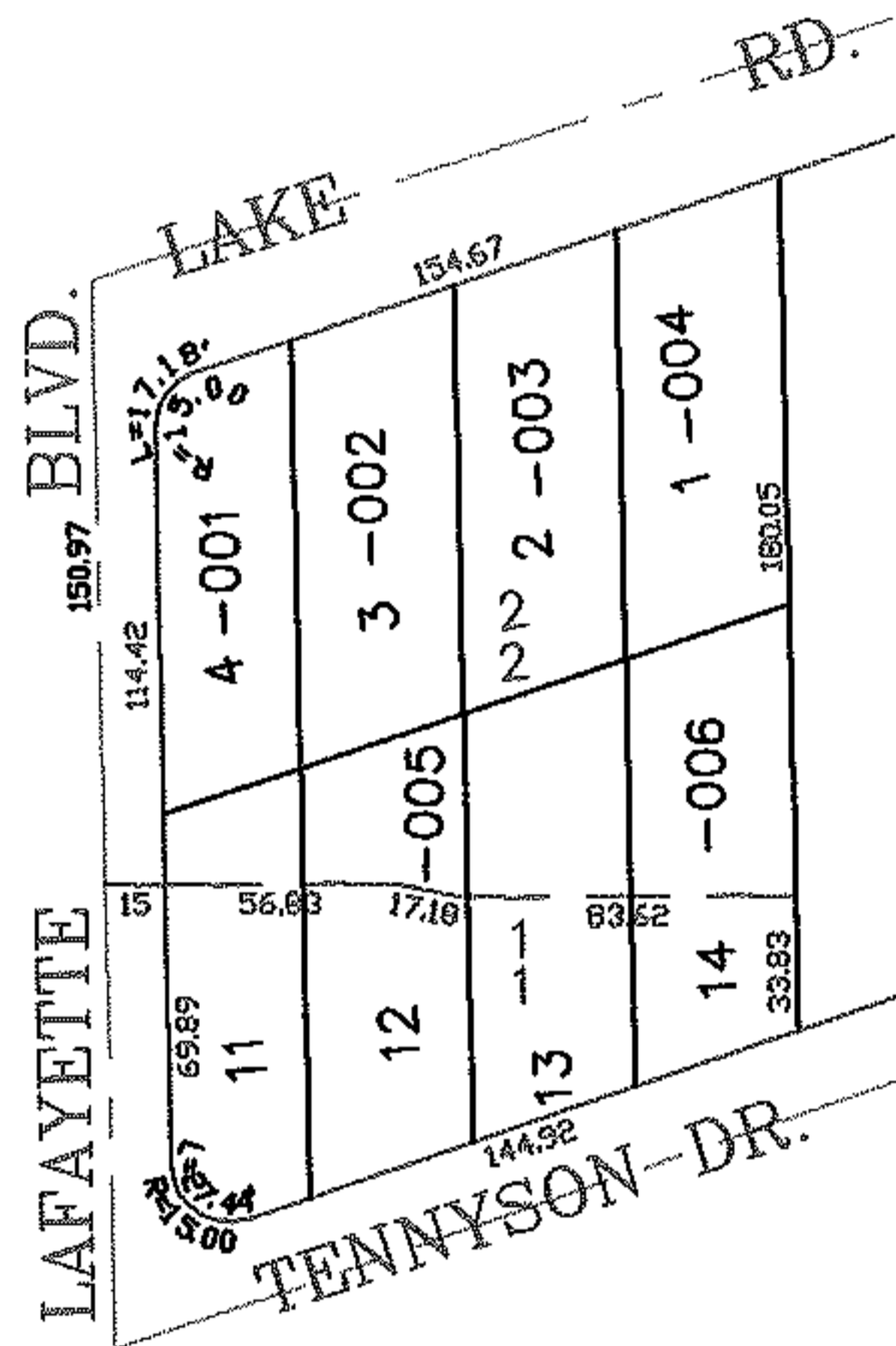
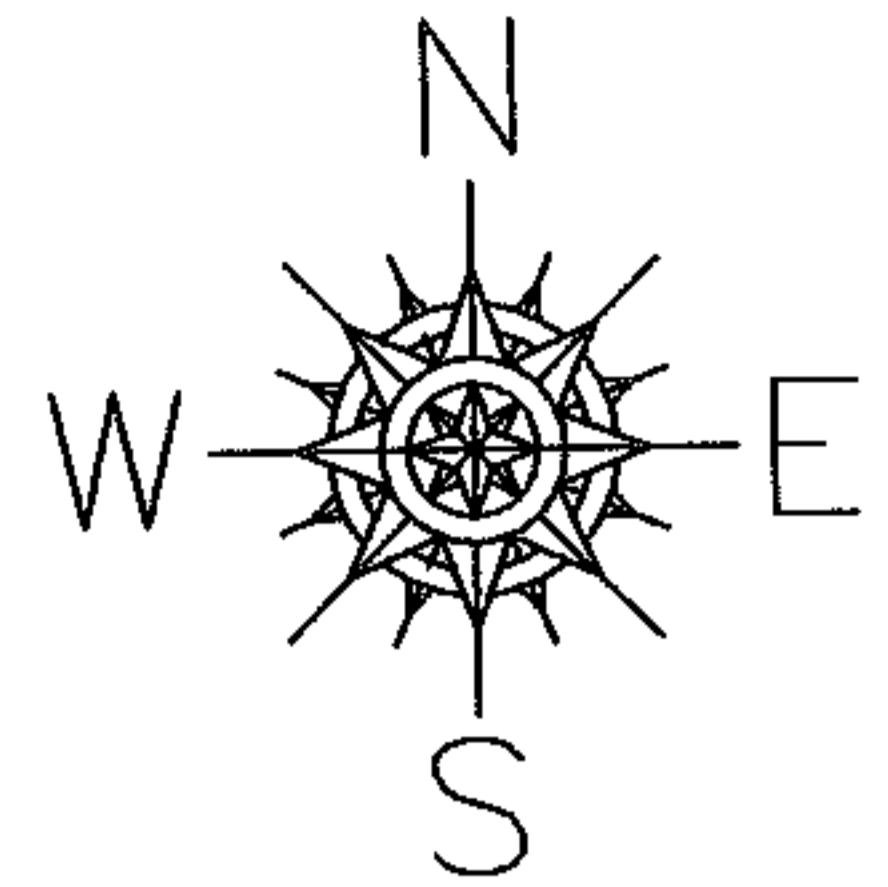
RASTER

PARENT PARCEL: 03-00-037-103-001 THRU -006

CHILD PARCEL: XX-XX-XXX-XXX-XXX

STARTING POINT: XXXXXX

NO. 01783



SPLITS/DEEDS PROCESSED

LORAIN COUNTY TAX MAP DEPARTMENT
226 MIDDLE AVE. ELYRIA, OHIO

SURVEYED BY: THOMAS SIMON
 CLOSURE: 0.00 : 10.000
 MAP PAGE(S): 03-00-037-A
 APPROVED BY: JAH DATE: XX/XX/XX
 SCALE: 1" = 100 PRIOR INSTRUMENT: DV XXXX/XXX