

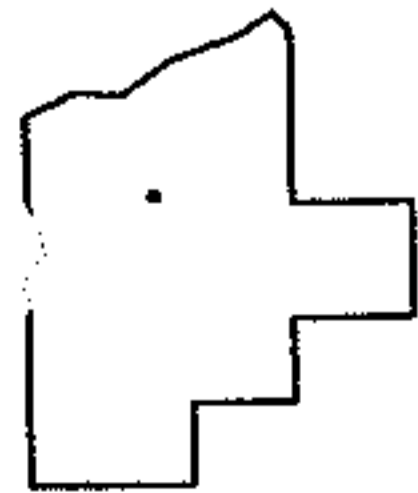
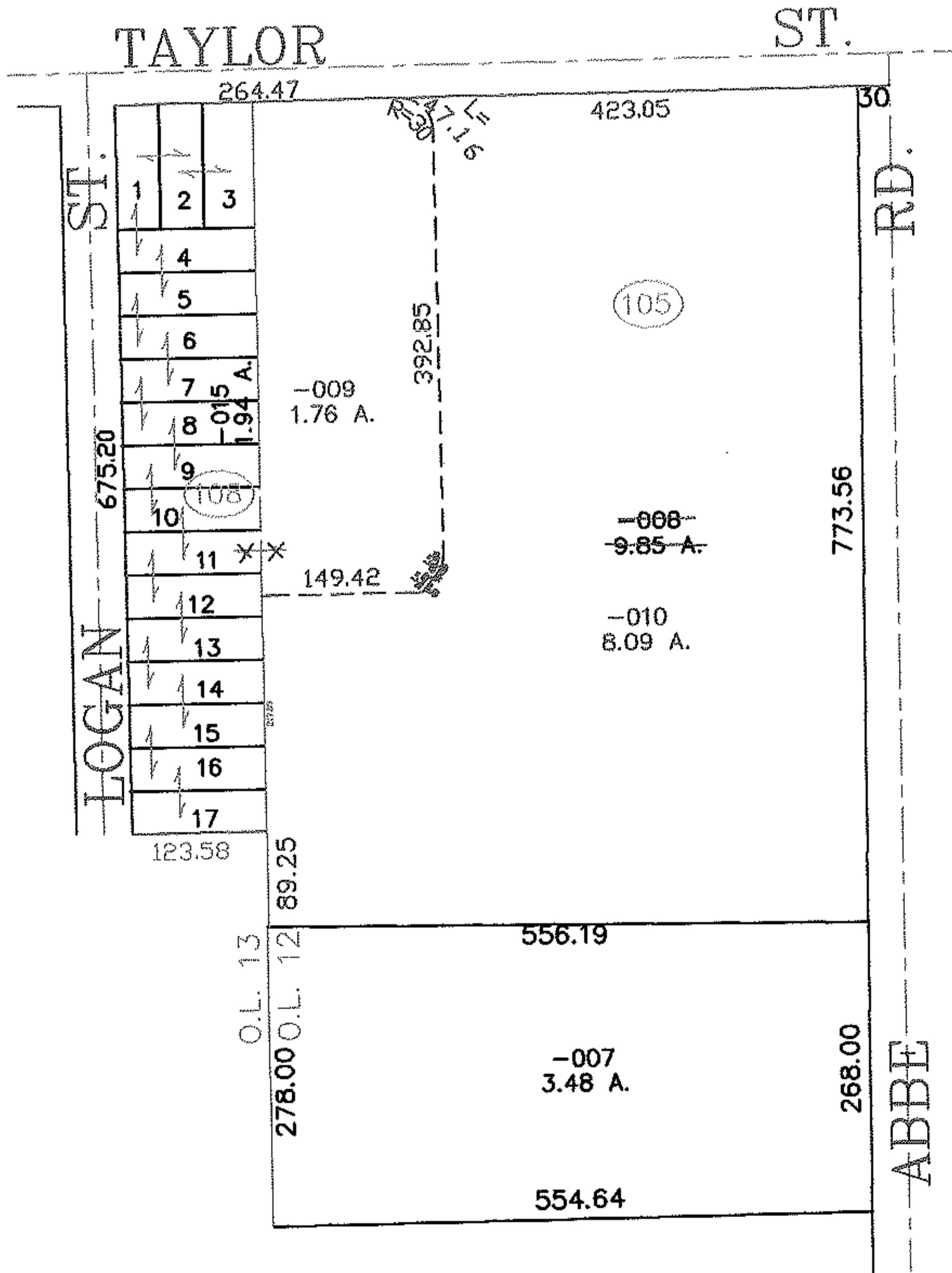
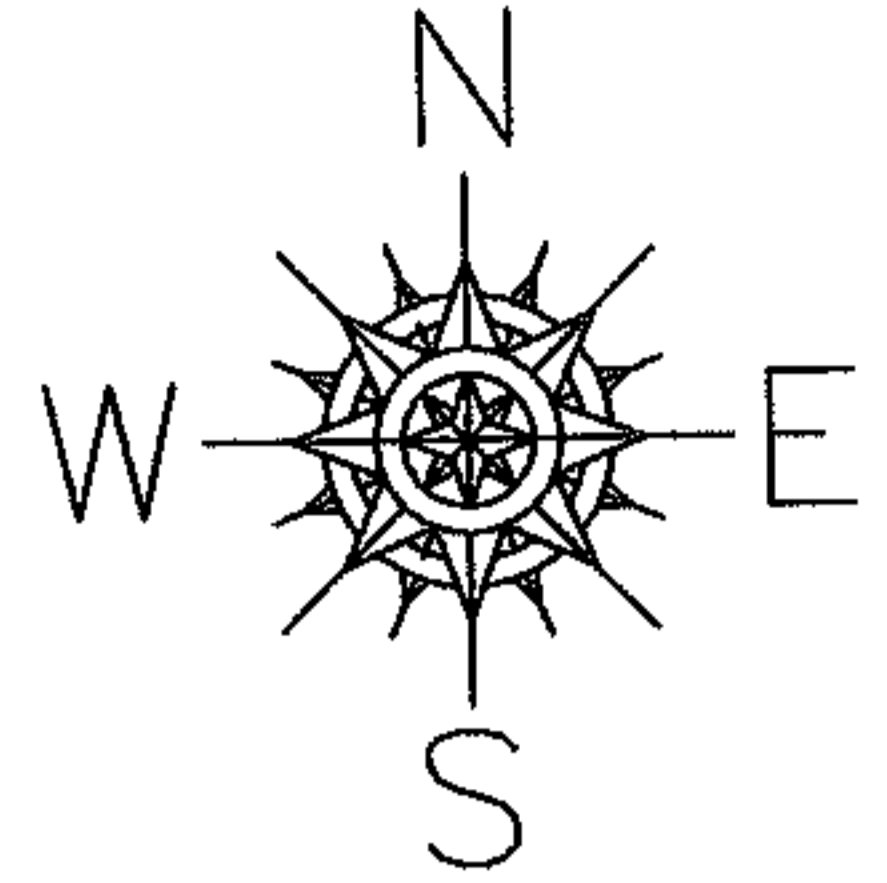
RASTER

PARENT PARCEL: 06-25-012-105-008, 06-25-013-108-015

CHILD PARCEL: 06-25-012-105-009-010

STARTING POINT: INTERSECTION OF TAYLOR ST. & LOGAN ST.

NO. 01754



SPLITS/DEEDS PROCESSED

LORAIN COUNTY TAX MAP DEPARTMENT
226 MIDDLE AVE. ELYRIA, OHIO

SURVEYED BY: THOMAS A. SIMON

CLOSURE: 0.00 : 10.000

MAP PAGE(S): 6-106

APPROVED BY: JAH DATE: 9-7-04

SCALE: 1" = 200 PRIOR INSTRUMENT: 20010800192