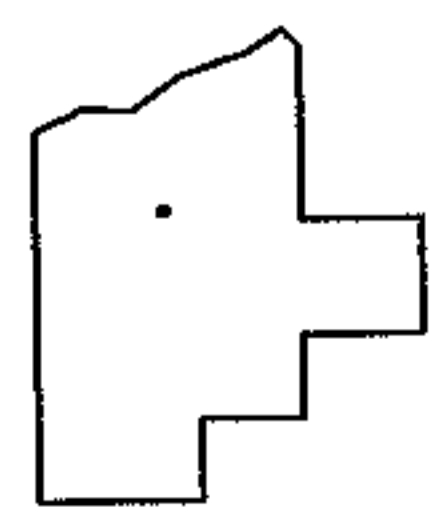
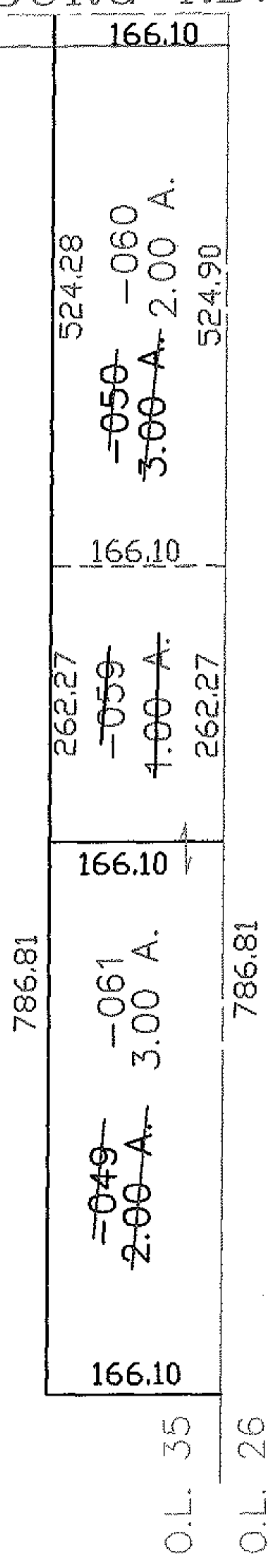
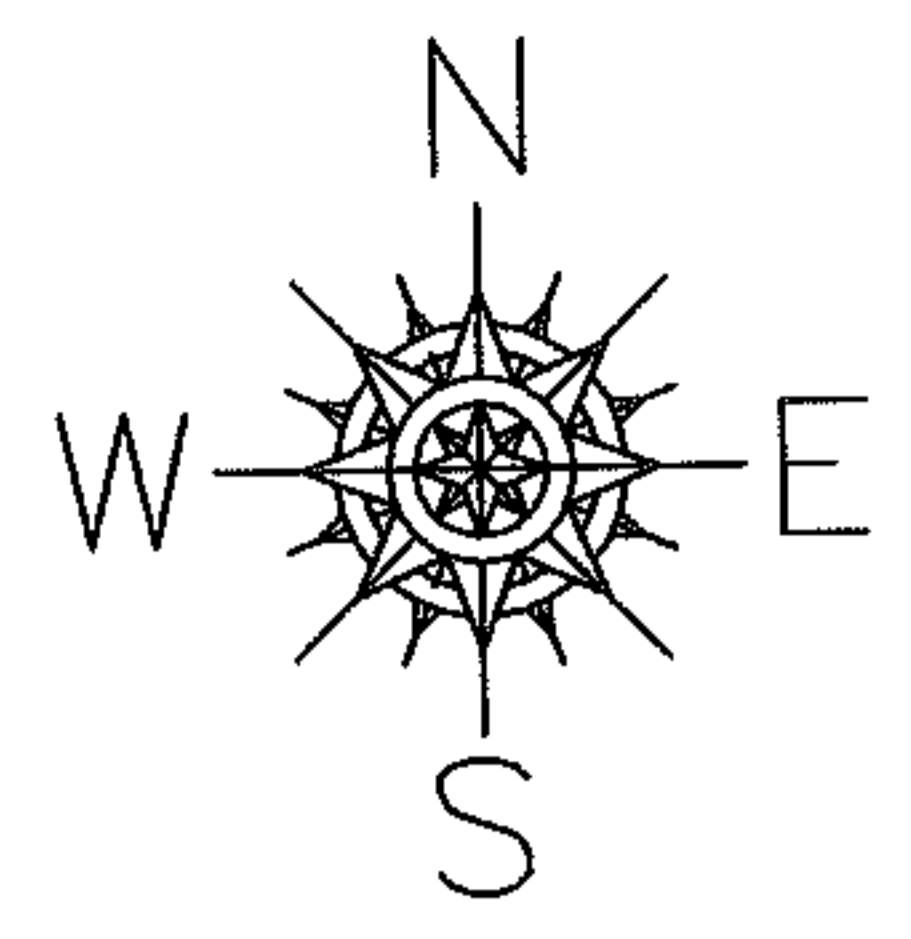


RASTER

PARENT PARCEL: 12-00-035-102-050, -049  
CHILD PARCEL: 12-00-035-102-059 THRU -061  
STARTING POINT: CENTERLINE OF ELYRIA TWINSBURG RD. & O.L. 35

NO. 01738

ELYRIA TWINSBURG RD.



**SPLITS/DEEDS PROCESSED**  
LORAIN COUNTY TAX MAP DEPARTMENT  
226 MIDDLE AVE. ELYRIA, OHIO

SURVEYED BY: JOHN POZYWAK  
CLOSURE: 0.00 : 10.000  
MAP PAGE(S): 12-00-035-B  
APPROVED BY: JAH DATE: 8-19-04  
SCALE: 1" = 200 PRIOR INSTRUMENT: OR 241/665