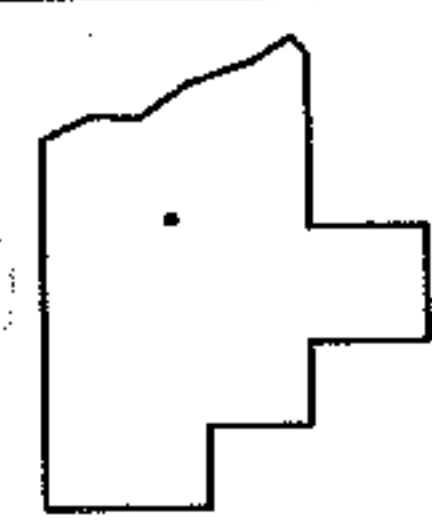
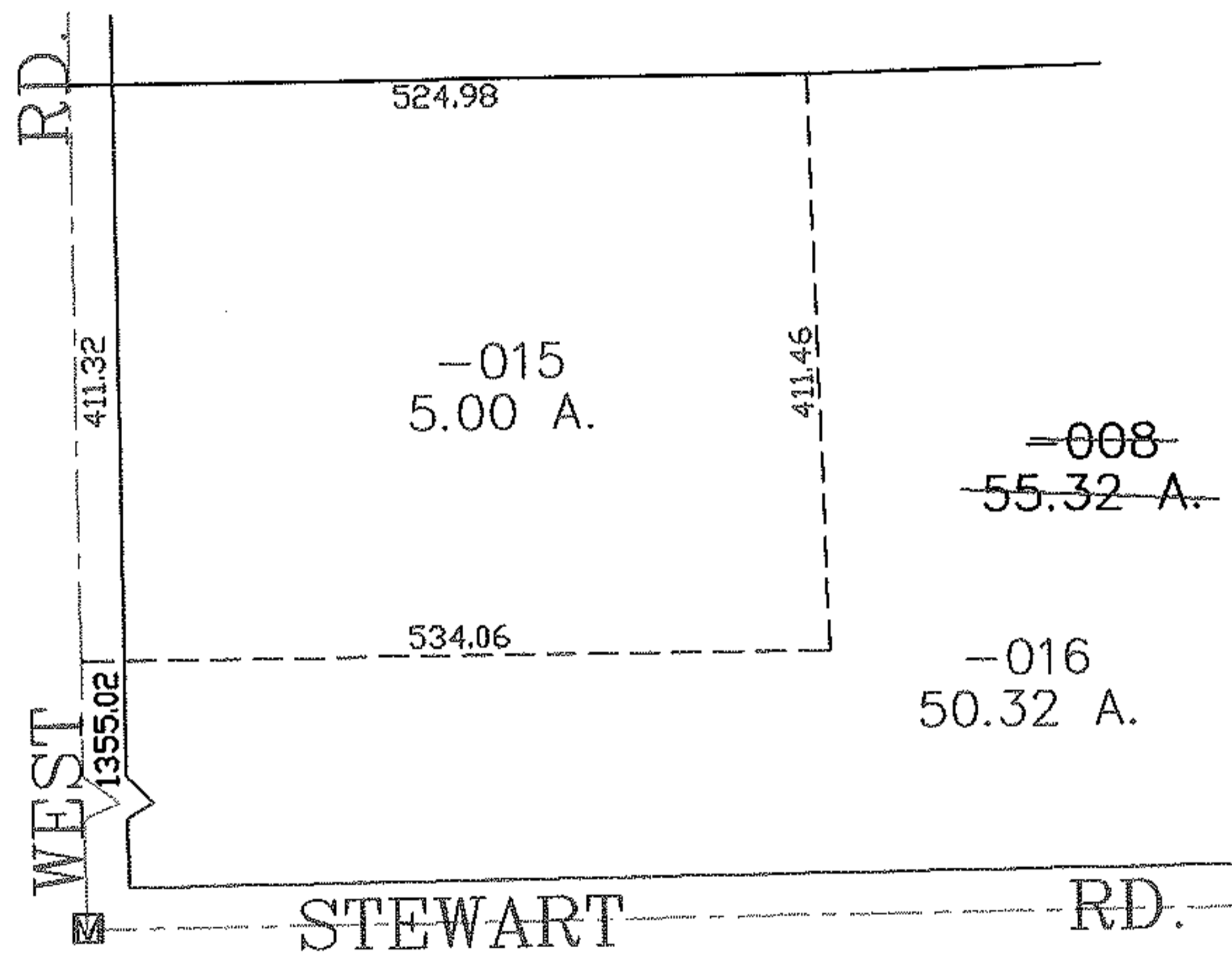
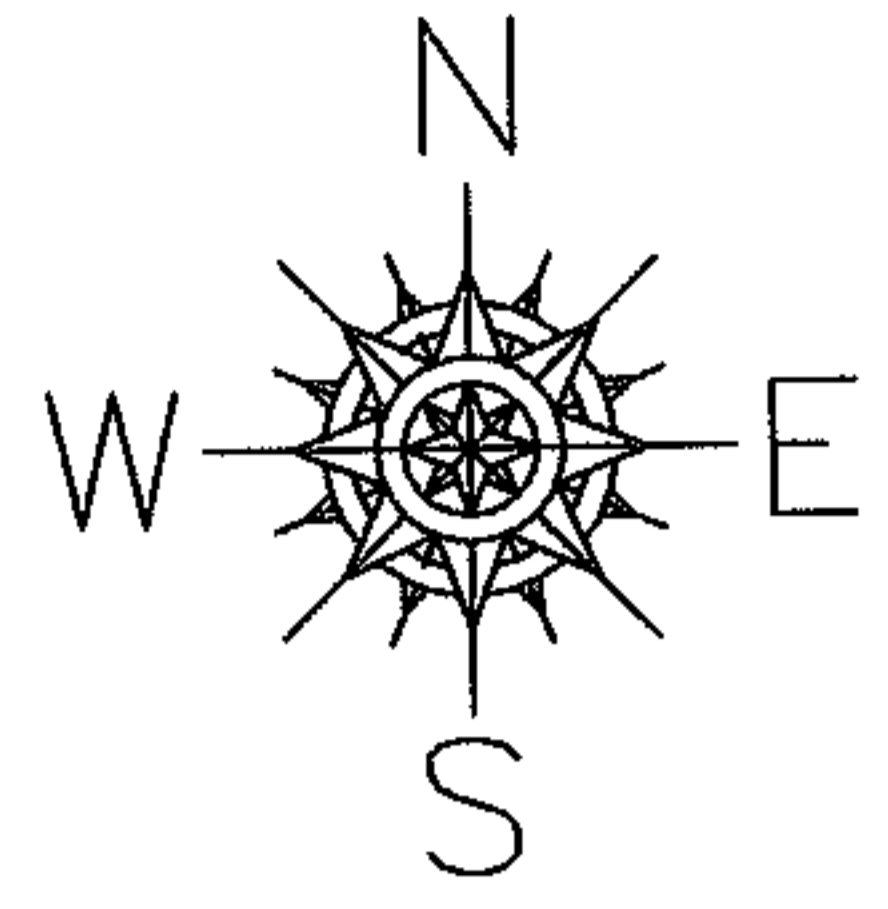


RASTER

PARENT PARCEL: 21-17-018-000-008
CHILD PARCEL: 21-17-018-000-015, -016
STARTING POINT: CENTERLINE OF WEST RD. & STEWART RD.

NO. 01727



SPLITS/DEEDS PROCESSED
LORAIN COUNTY TAX MAP DEPARTMENT
226 MIDDLE AVE. ELYRIA, OHIO

SURVEYED BY: ALEX KELSER
CLOSURE: 0.00 : 10.000
MAP PAGE(S): 21-17-018-A
APPROVED BY: JAH DATE: 8-10-04
SCALE: 1" = 200 PRIOR INSTRUMENT: 20020841413