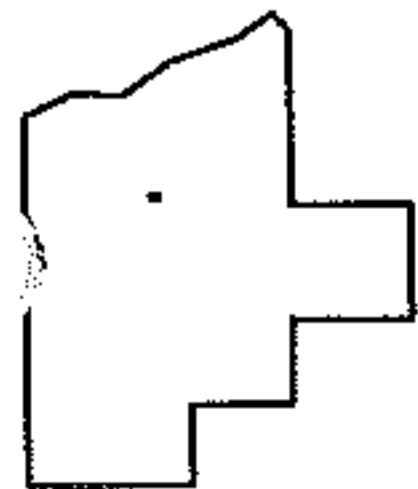
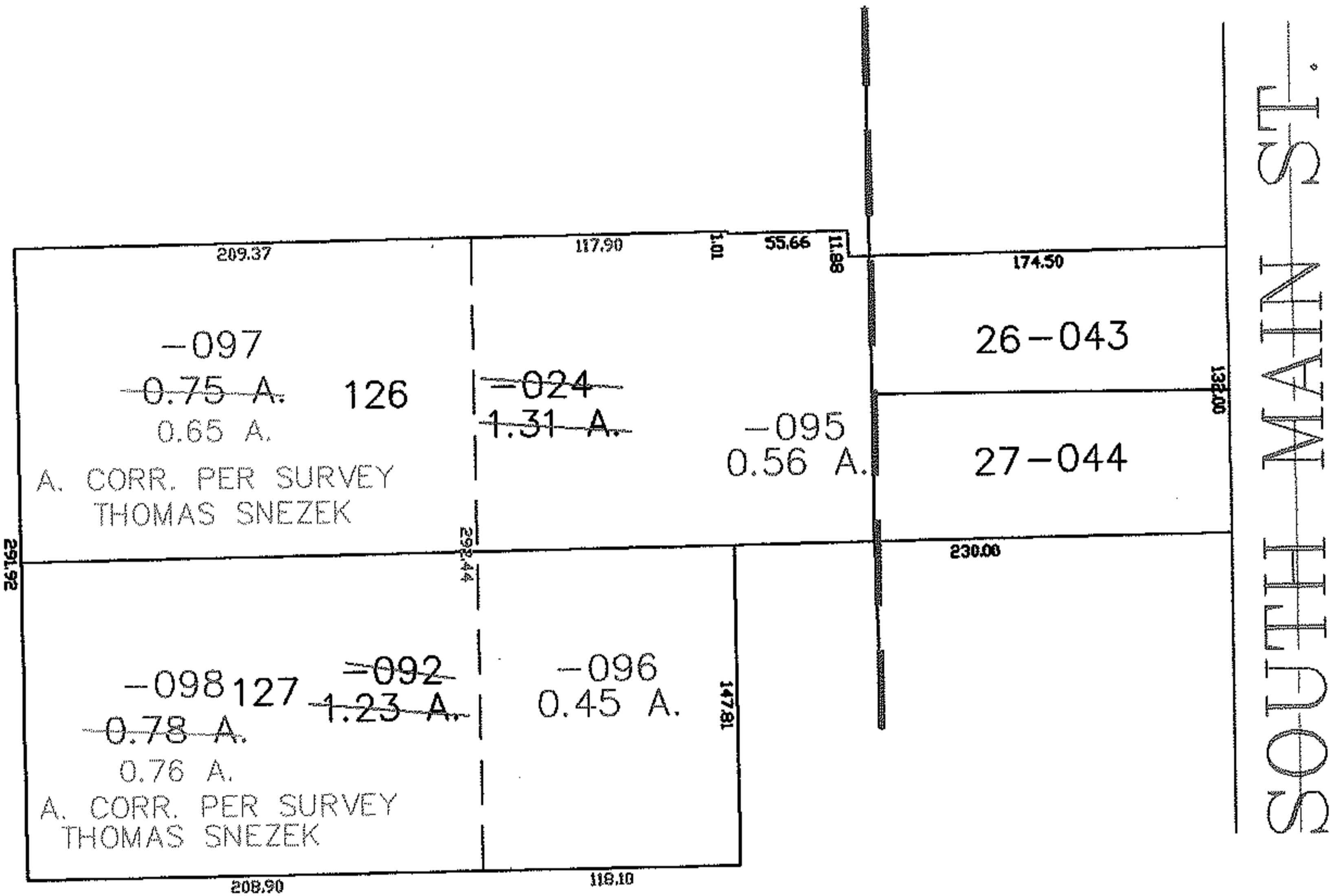
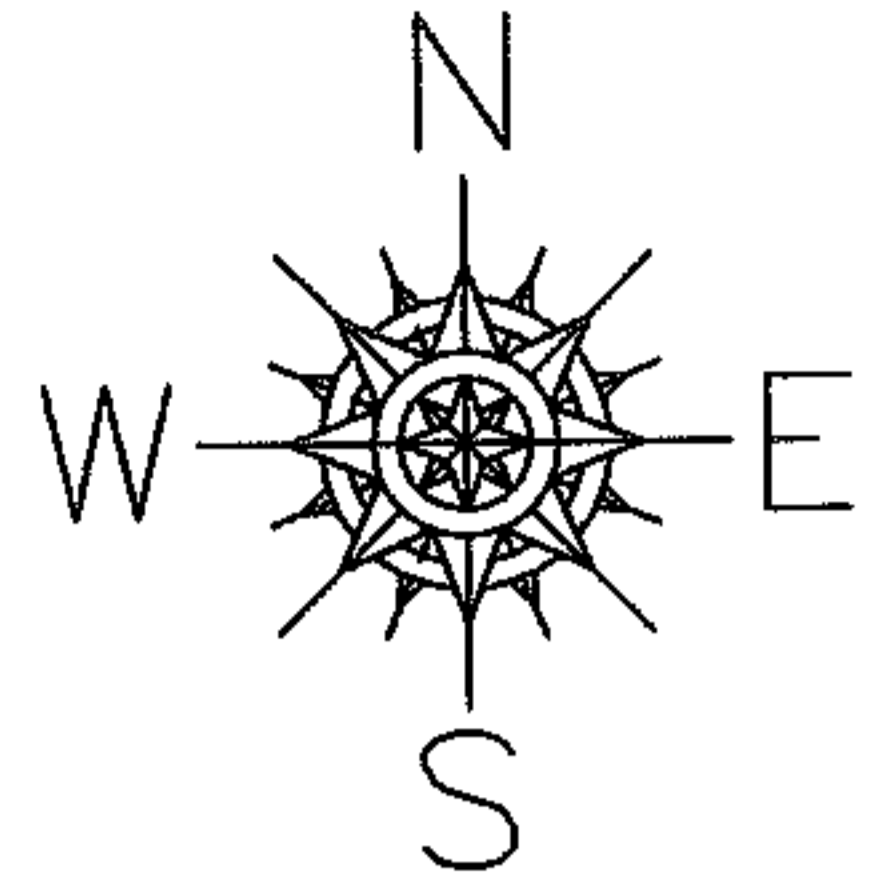


RASTER

PARENT PARCEL: 18-00-027-114-024, -092
CHILD PARCEL: 18-00-027-114-095 THRU -098
STARTING POINT: NORTHEASTERLY CORNER OF S/L 26

NO. 01706



SPLITS/DEEDS PROCESSED

LORAIN COUNTY TAX MAP DEPARTMENT
226 MIDDLE AVE. ELYRIA, OHIO

SURVEYED BY: THOMAS SNEZEK
CLOSURE: 0.00 : 10.000
MAP PAGE(S): 18-00-027-D
APPROVED BY: JAH DATE: 8-23-04
SCALE: 1" = 100' PRIOR INSTRUMENT: 20030958589