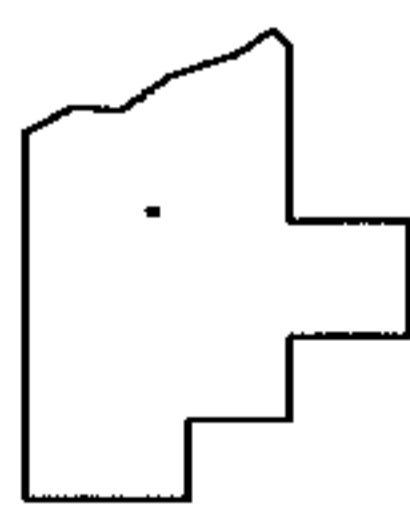
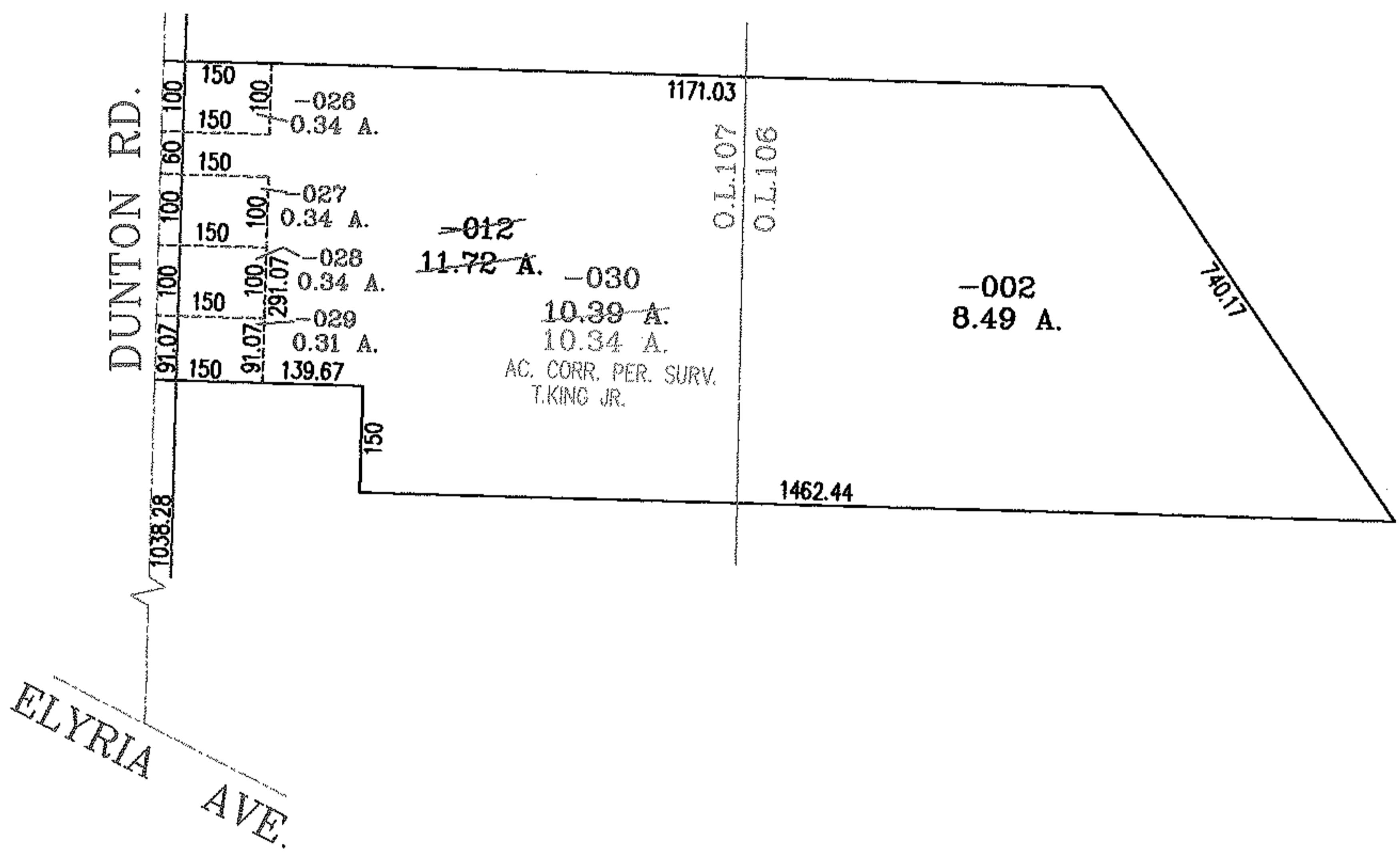
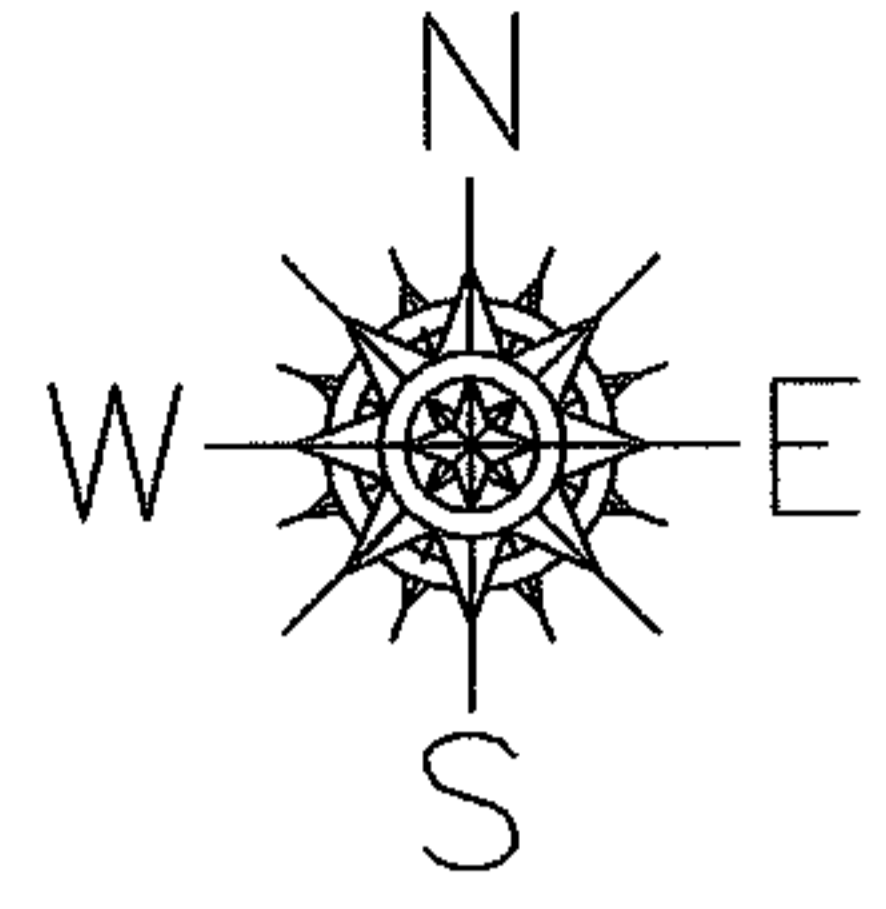


RASIER

PARENT PARCEL: 03-00-107-102-012, 03-00-106-101-002  
CHILD PARCEL: 03-00-107-102-026 THRU -030  
STARTING POINT: INTERSECTION OF C/L OF ELYRIA AVE AND C/L OF DUNTON RD.

NO. 01703



**SPLITS/DEEDS PROCESSED**  
LORAIN COUNTY TAX MAP DEPARTMENT  
226 MIDDLE AVE. ELYRIA, OHIO

SURVEYED BY: THOMAS J. KING JR.  
CLOSURE: .00:10.000  
MAP PAGE(S): 03-00-107-B.3-00-106-B  
APPROVED BY: RRM DATE: 7-13-04  
SCALE: 1" = 300 PRIOR INSTRUMENT: 20030891135