

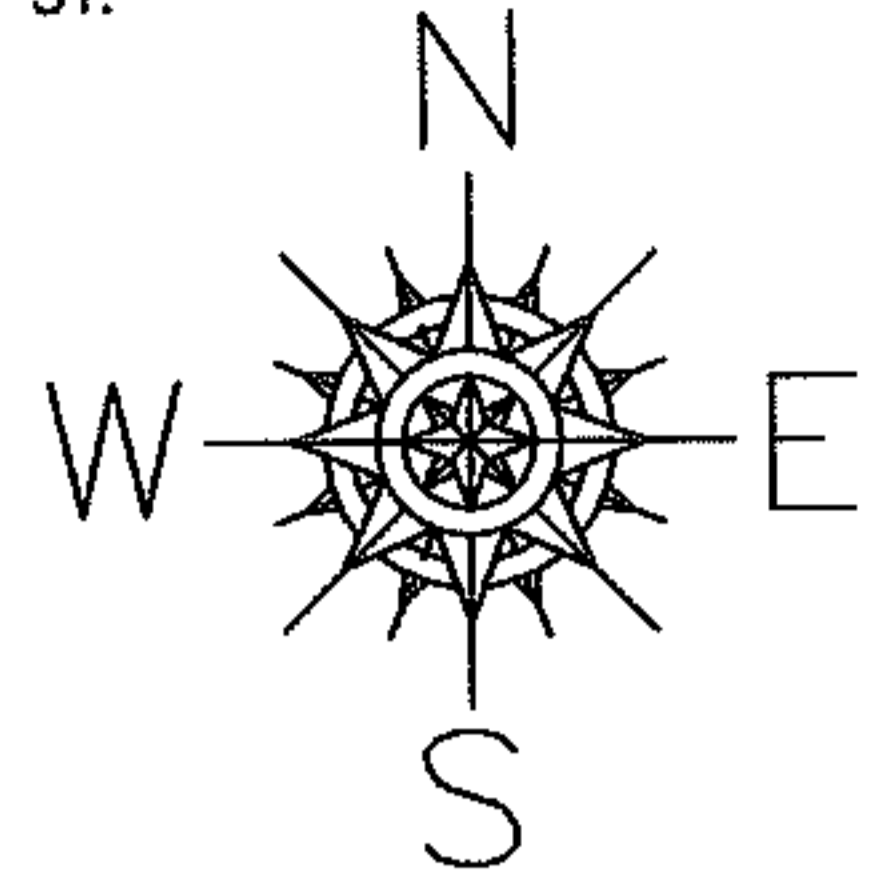
RASTER

PARENT PARCEL: 06-25-020-107-035

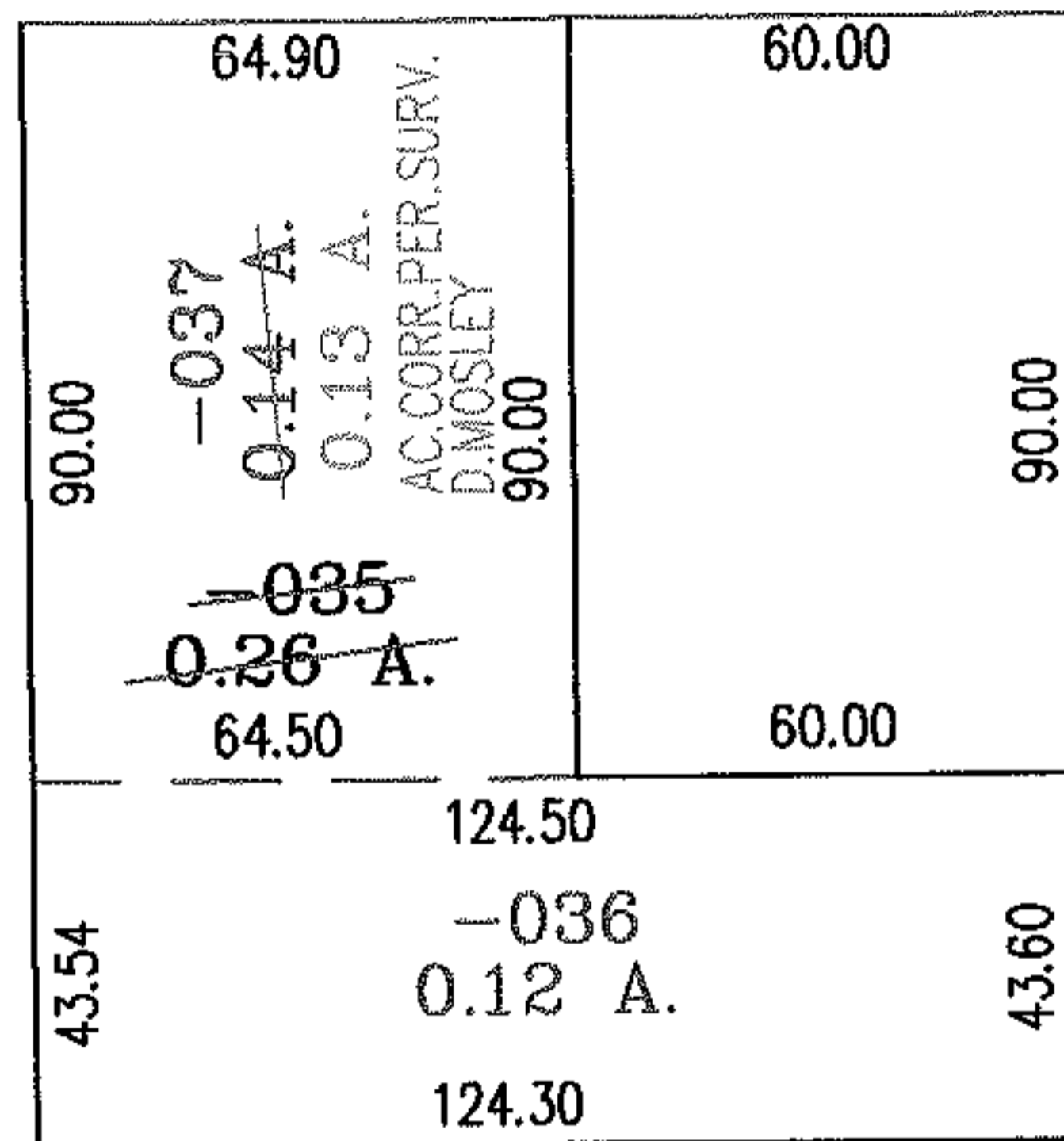
CHILD PARCEL: 06-25-020-107-036.-037

NO. 01701

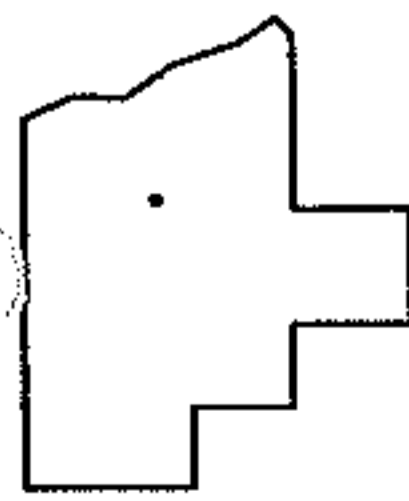
STARTING POINT: INTERSECTION OF WEST ROW LINE OF BEEBE AND THE SOUTH ROW LINE OF POPLAR ST.



POPLAR ST.



BEEBE AVE.



SPLITS/DEEDS PROCESSED

LORAIN COUNTY TAX MAP DEPARTMENT
226 MIDDLE AVE. ELYRIA, OHIO

SURVEYED BY: DOUGLAS H. MOSLEY

CLOSURE: .01:10.000

MAP PAGE(S): 6-88

APPROVED BY: RRM DATE: 7-13-04

SCALE: 1" = 50' PRIOR INSTRUMENT: DV 1084/773

original