

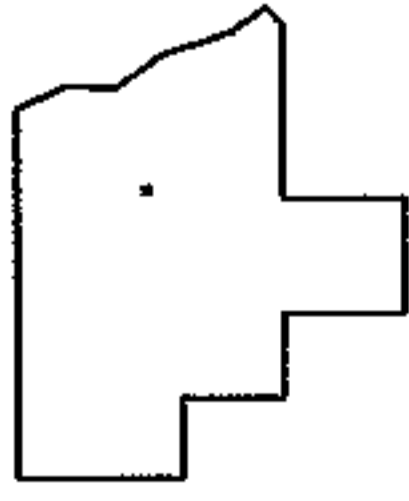
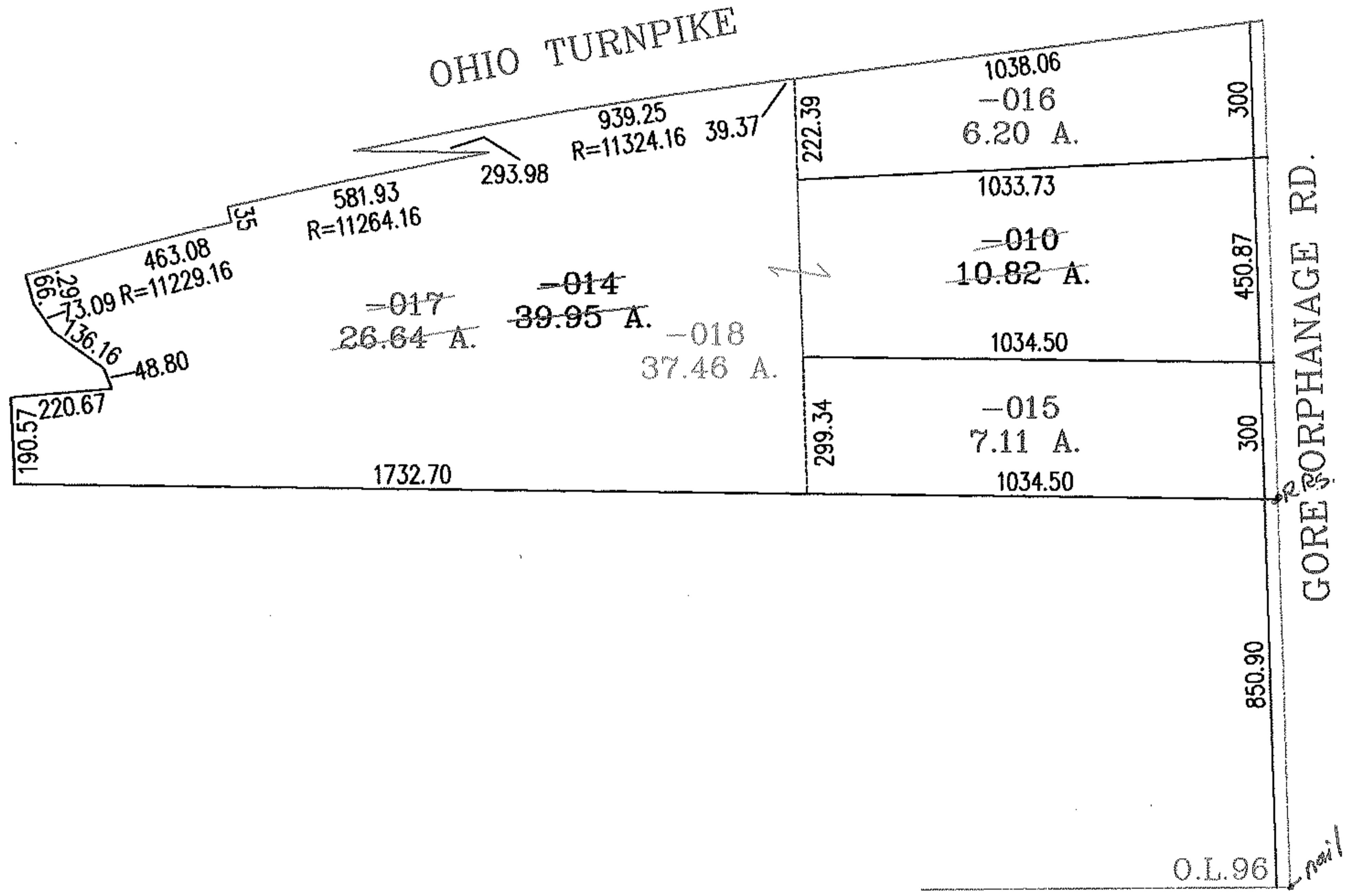
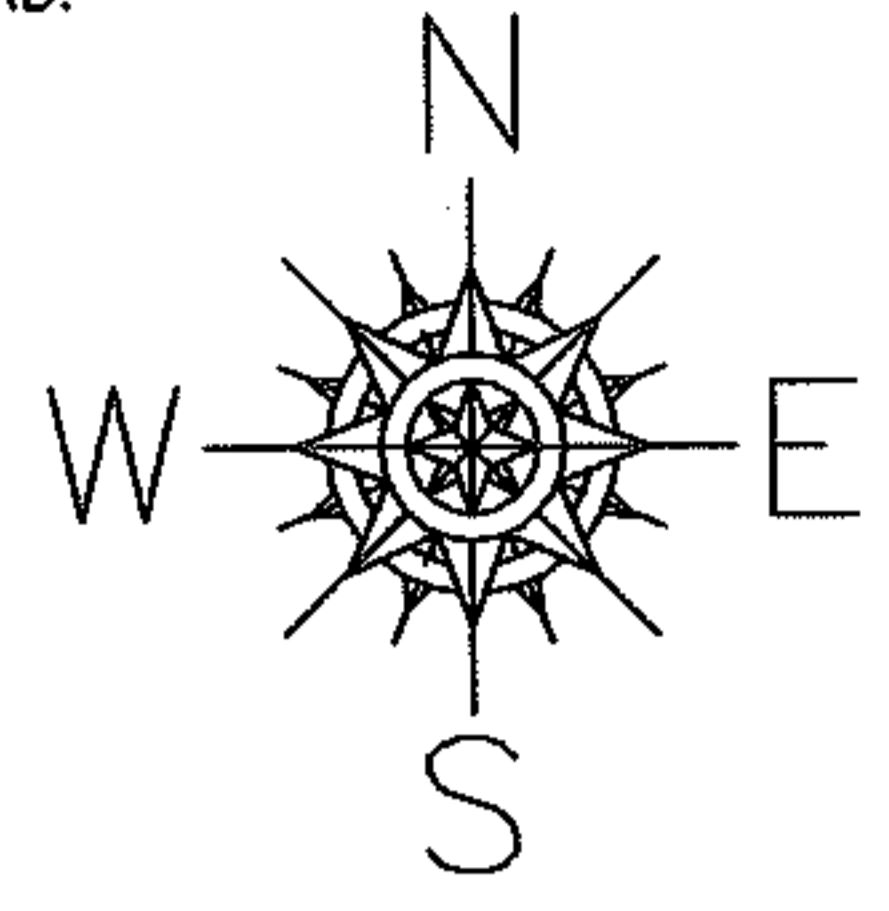
RASTER

PARENT PARCEL: 08-00-096-000-014,-010

NO. 01674

CHILD PARCEL: 08-00-096-000-015 THRU -018

STARTING POINT: INTERSECTION OF SOUTHEAST CORNER OF O.L.96 AND C/L OF GORE ORPHANAGE RD.



SPLITS/DEEDS PROCESSED
LORAIN COUNTY TAX MAP DEPARTMENT
 226 MIDDLE AVE. ELYRIA, OHIO

SURVEYED BY: CHARLES P. WARYU
 CLOSURE: .03:10.000
 MAP PAGE(S): 8-A
 APPROVED BY: RRM DATE: 6-14-04
 SCALE: 1" = 400' PRIOR INSTRUMENT: 20000684073