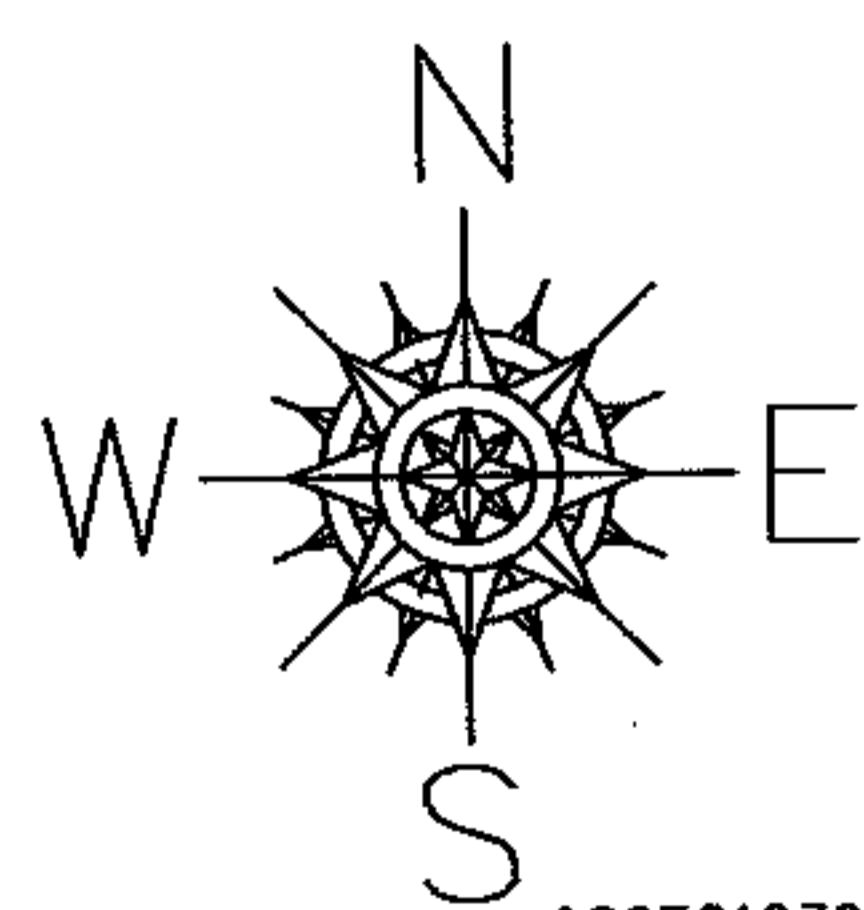
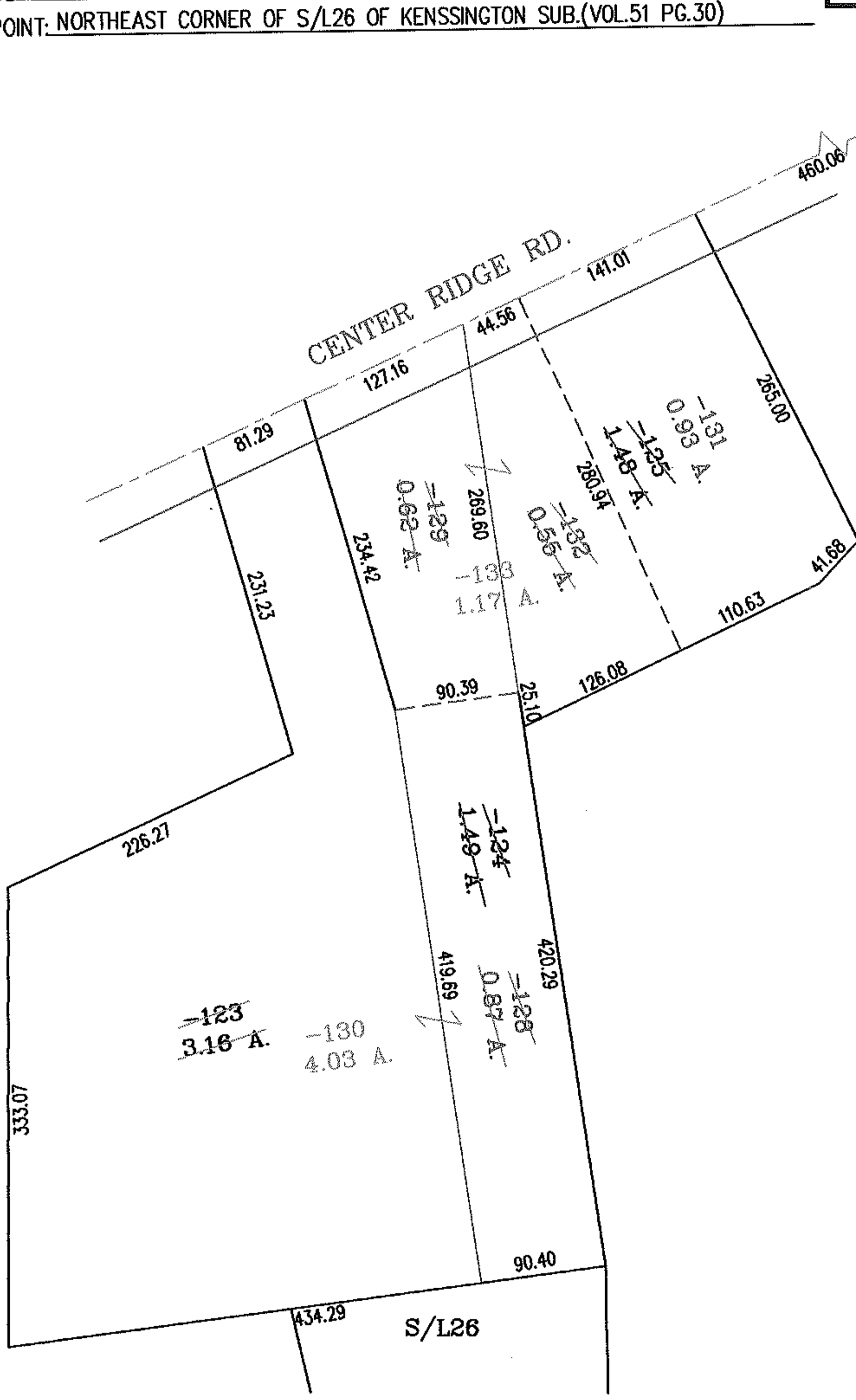


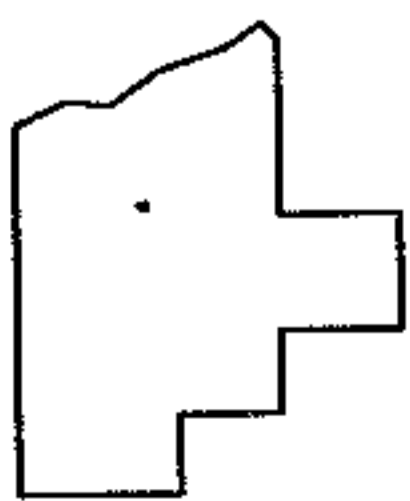
RASTER

PARENT PARCEL: 07-00-021-119-123 THRU -125  
CHILD PARCEL: 07-00-021-119-128 THRU -133  
STARTING POINT: NORTHEAST CORNER OF S/L26 OF KENSSINGTON SUB.(VOL.51 PG.30)

NO. 01656



PRIOR INSTRUMENT: 980581630  
20030935071



**SPLITS/DEEDS PROCESSED**  
LORAIN COUNTY TAX MAP DEPARTMENT  
226 MIDDLE AVE. ELYRIA, OHIO

SURVEYED BY: DANE A.HAPONEK  
CLOSURE: .00:10.000  
MAP PAGE(S): 7-00-021-B&D  
APPROVED BY: RRM DATE: 5-17-04  
SCALE: 1" = 125' PRIOR INSTRUMENT: