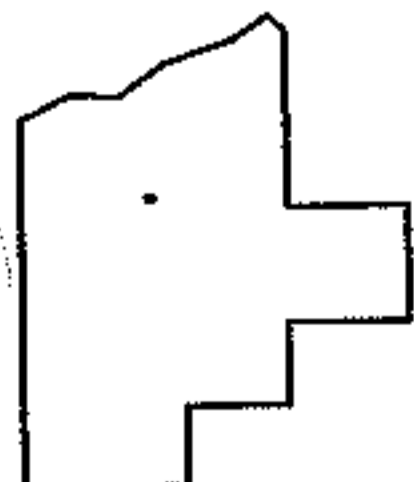
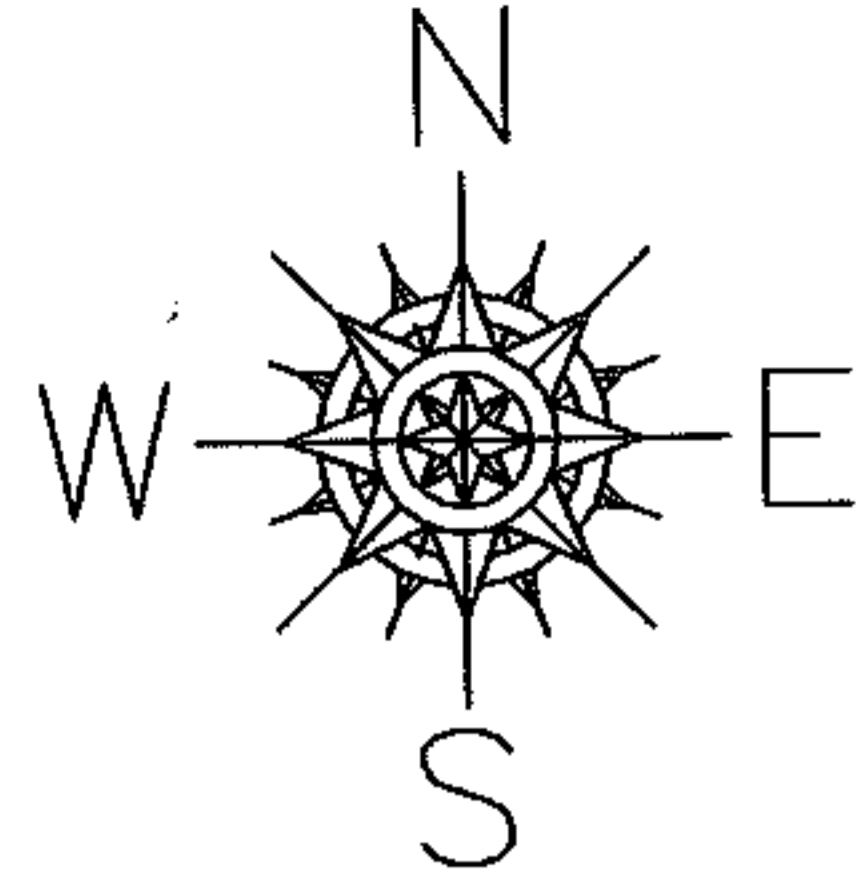
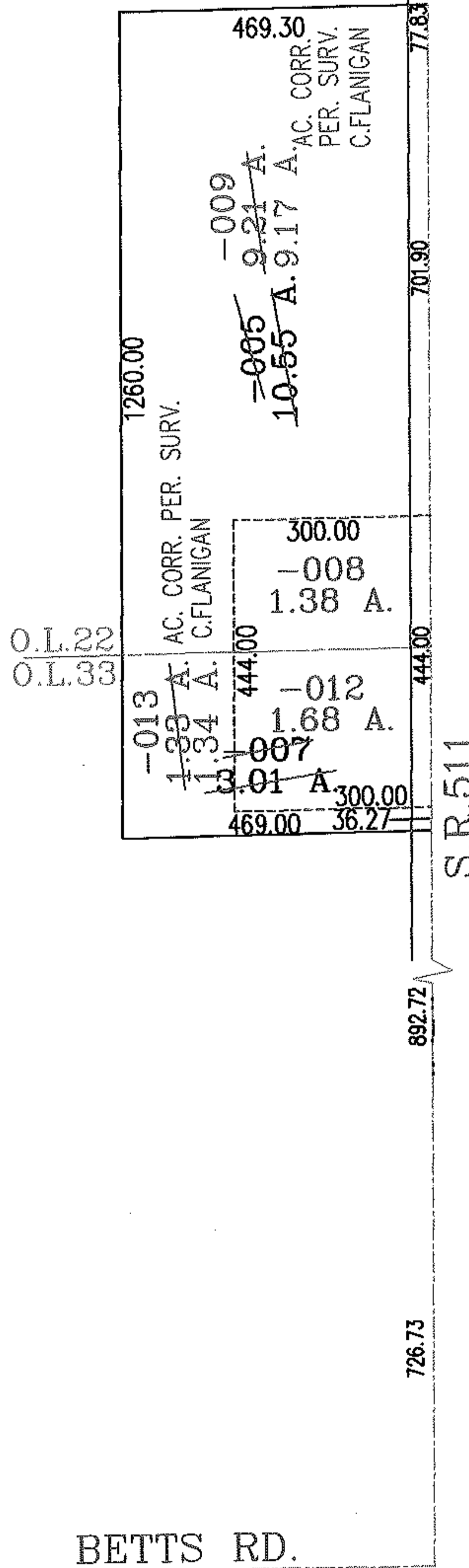


PARENT PARCEL: 13-09-022-000-005,13-09-033-000-007

CHILD PARCEL: 13-09-022-000-008,-009,13-09-033-000-012,-013

STARTING POINT: INTERSECTION OF C/L OF S.R.511 AND C/L OF BETTS RD.

NO. 01650



SPLITS/DEEDS PROCESSED
LORAIN COUNTY TAX MAP DEPARTMENT
 226 MIDDLE AVE. ELYRIA, OHIO

SURVEYED BY: CHARLES W. FLANIGAN
 CLOSURE: .00:10.000
 MAP PAGE(S): 13-F
 APPROVED BY: RRM DATE: 5-12-04
 SCALE: 1" = 300 PRIOR INSTRUMENT: 990605898