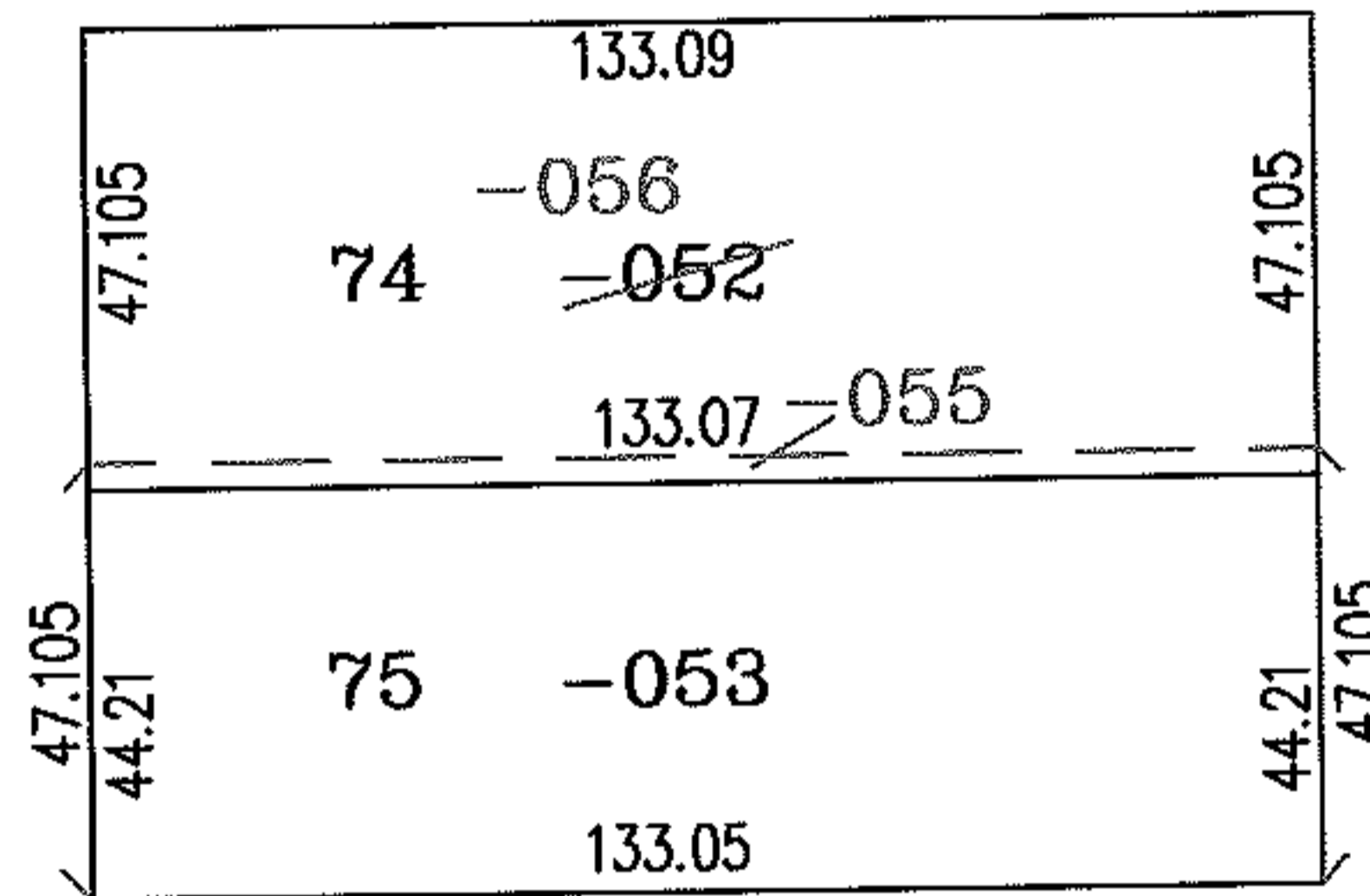
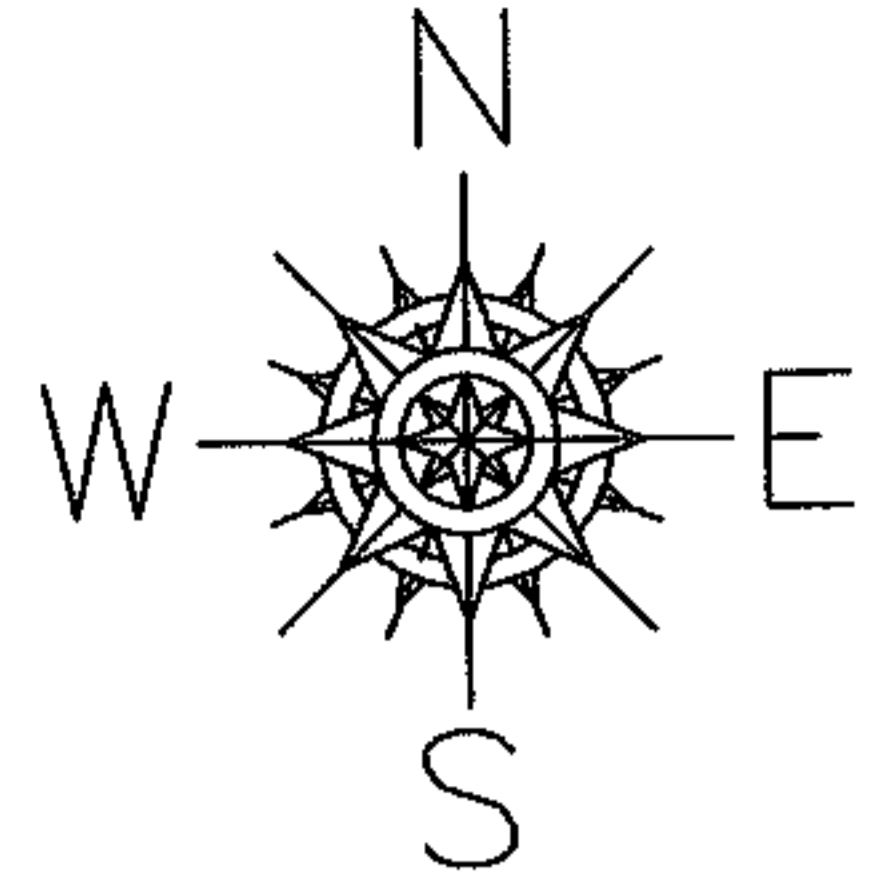


RASTER

PARENT PARCEL: 03-00-113-106-052,-053
CHILD PARCEL: 03-00-113-106-055,-056
STARTING POINT: SOUTHEAST CORNER OF S/L 75 OF HILLS ALLOTMENT (VOL.19 PG.7)

NO. 01648



CLIFTON AVE.



SPLITS/DEEDS PROCESSED

LORAIN COUNTY TAX MAP DEPARTMENT
226 MIDDLE AVE. ELYRIA, OHIO

SURVEYED BY: CHARLES P. WARYU
CLOSURE: .00:10.000
MAP PAGE(S): 3-00-113-B
APPROVED BY: RRM DATE: 5-10-04
SCALE: 1" = 50' PRIOR INSTRUMENT: 20020827573