

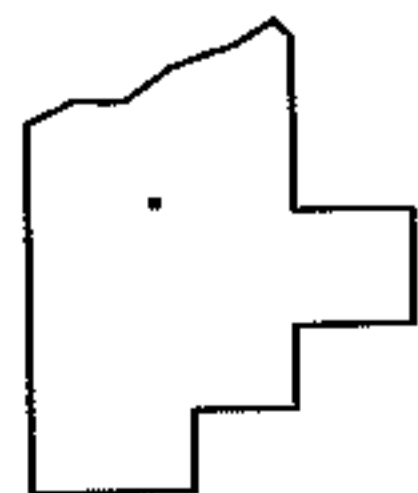
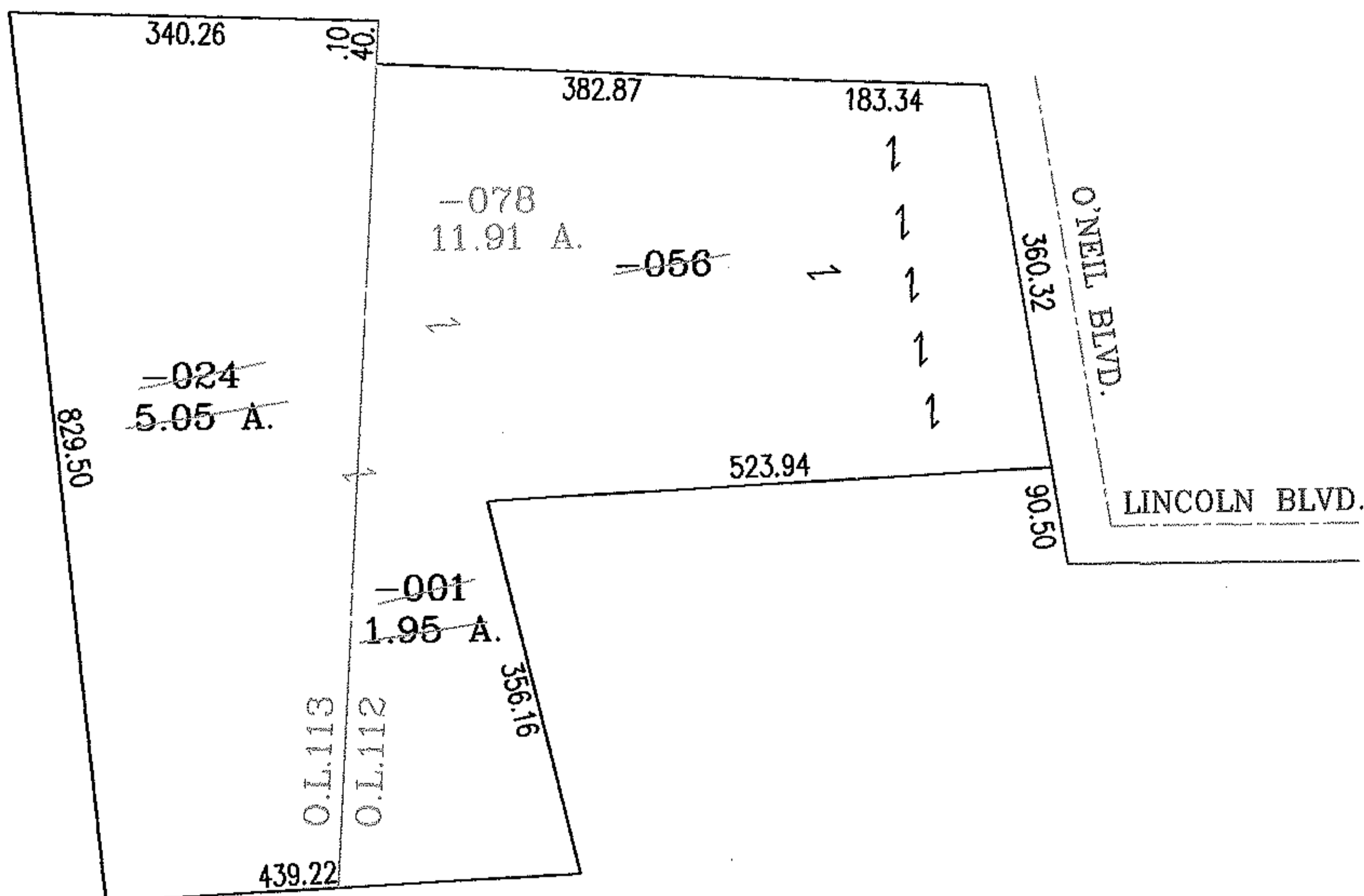
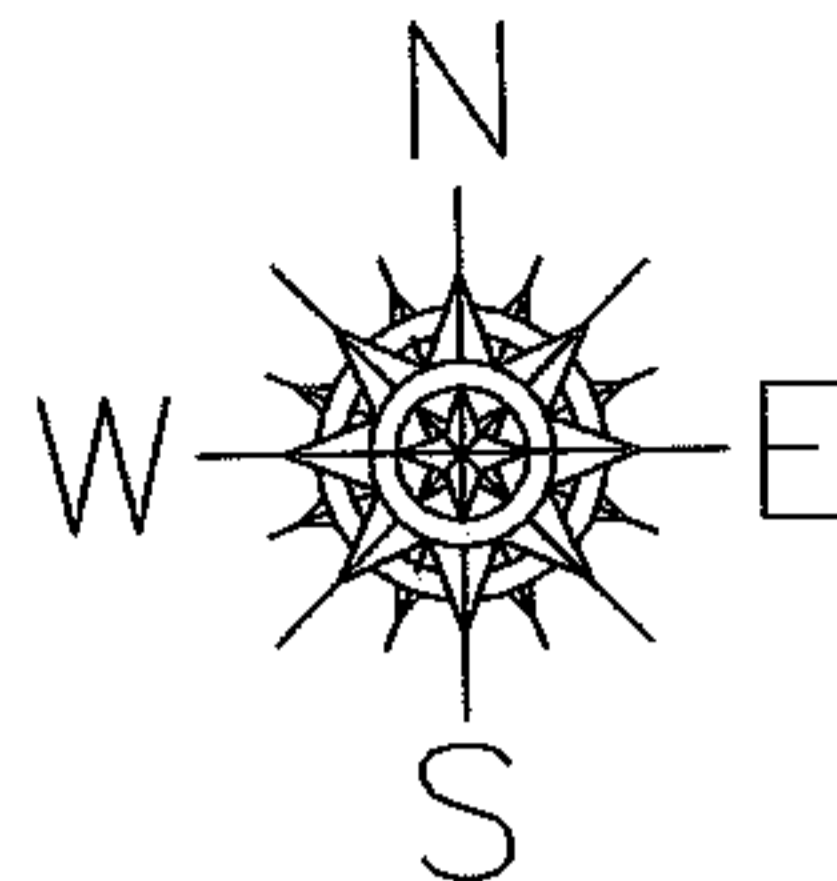
RASTER

PARENT PARCEL: 03-00-112-101-001, -056, 03-00-113-108-024

NO. 01628

CHILD PARCEL: 03-00-112-101-078

STARTING POINT: INTERSECTION OF WEST LINE OF O'NEIL BLVD. AND SOUTH LINE OF LINCOLN BLVD.



SPLITS/DEEDS PROCESSED

LORAIN COUNTY TAX MAP DEPARTMENT
226 MIDDLE AVE. ELYRIA, OHIO

SURVEYED BY: RICHARD METZKER

CLOSURE: .00:10.000

MAP PAGE(S): 3-00-112-A.3-00-113-B

APPROVED BY: RRM DATE: 4-13-04

SCALE: 1"= 200 PRIOR INSTRUMENT: _____