

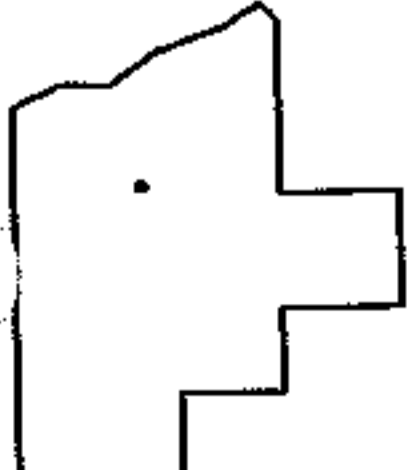
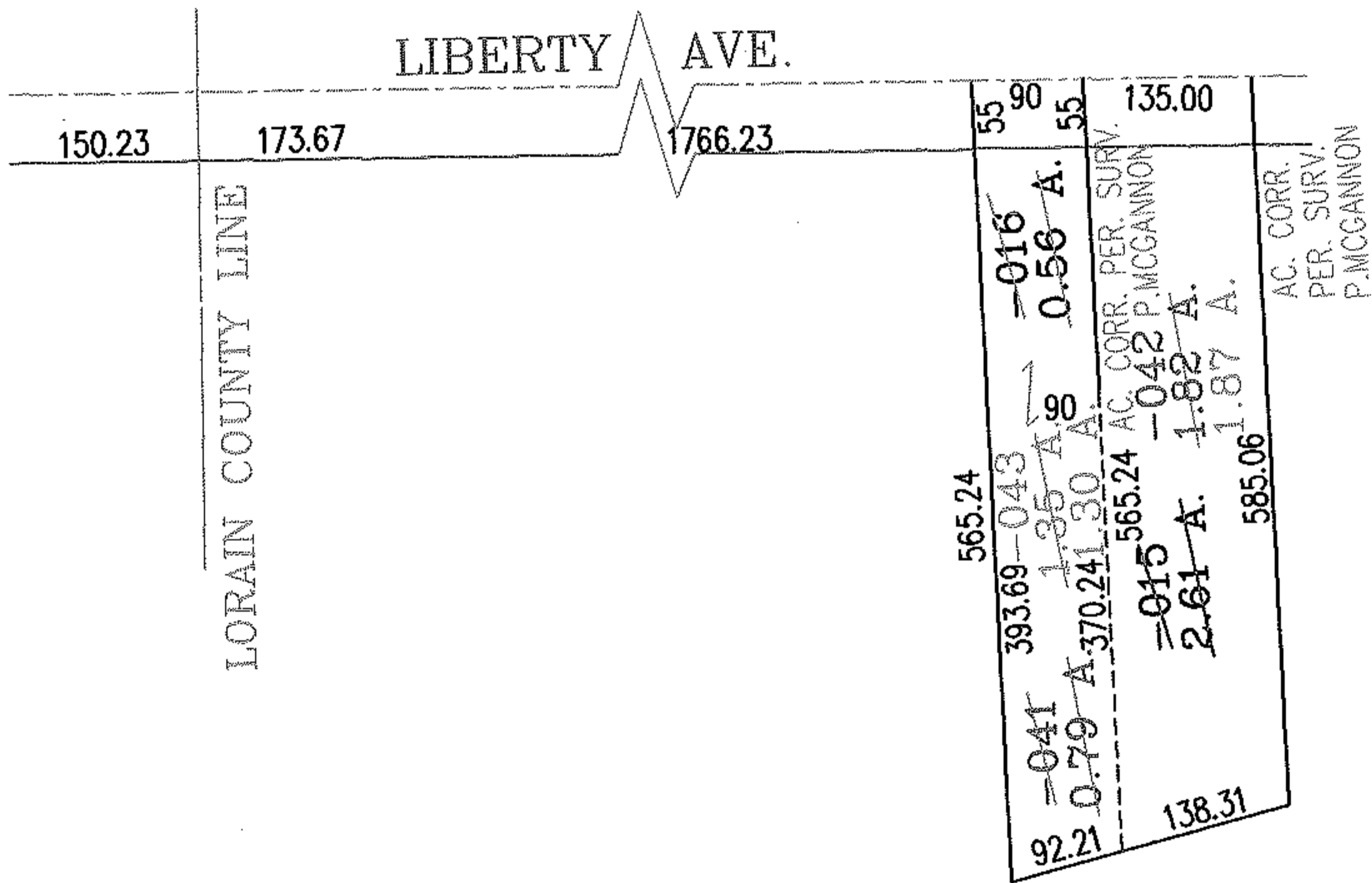
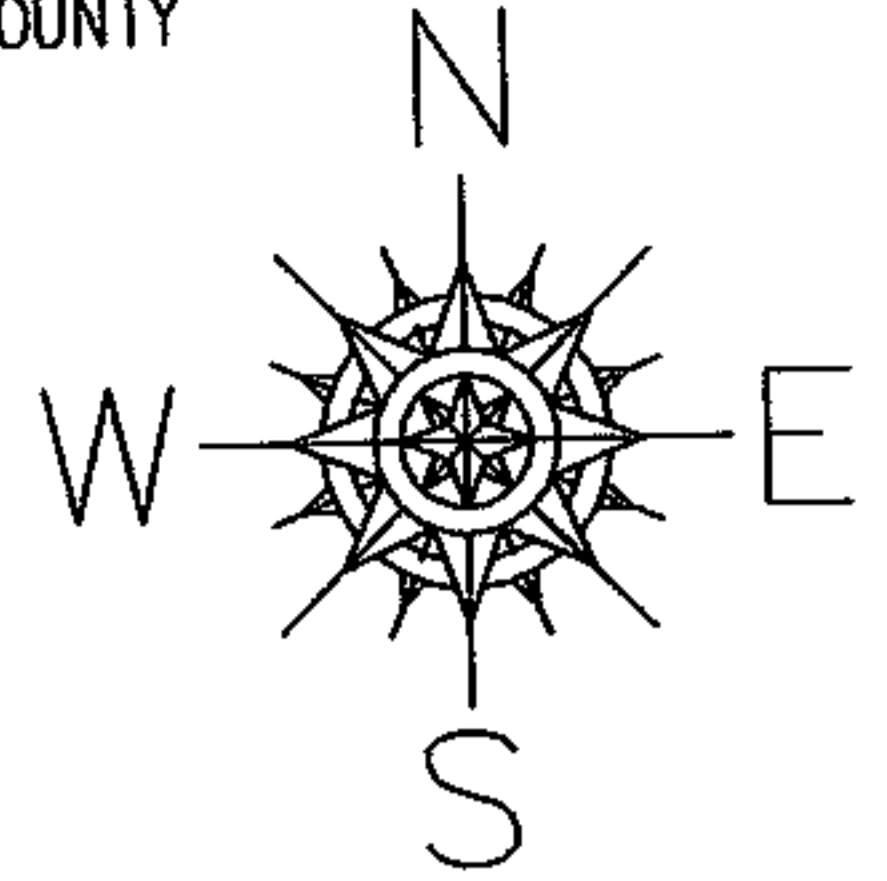
RASTER

PARENT PARCEL: 01-00-001-109-015,-016

CHILD PARCEL: 01-00-001-109-041 THRU -043

NO. 01627

STARTING POINT: INTERSECTION OF THE SOUTH R.O.W. OF LIBERTY AVE. AND WEST LINE OF LORAIN COUNTY



SPLITS/DEEDS PROCESSED
 LORAIN COUNTY TAX MAP DEPARTMENT
 226 MIDDLE AVE. ELYRIA, OHIO

SURVEYED BY: PATRICK A. MCGANNON
 CLOSURE: .02:10.000
 MAP PAGE(S): 1-00-001-D
 APPROVED BY: RRM DATE: 4-26-04
 SCALE: 1" = 200 PRIOR INSTRUMENT: OR 284/223