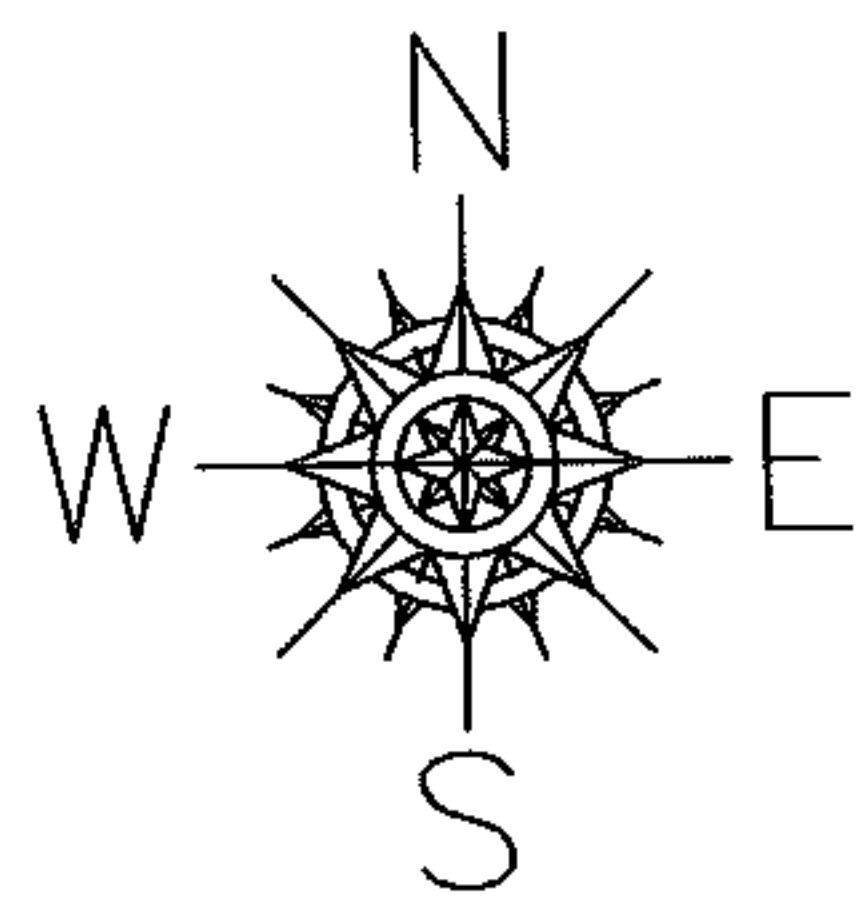
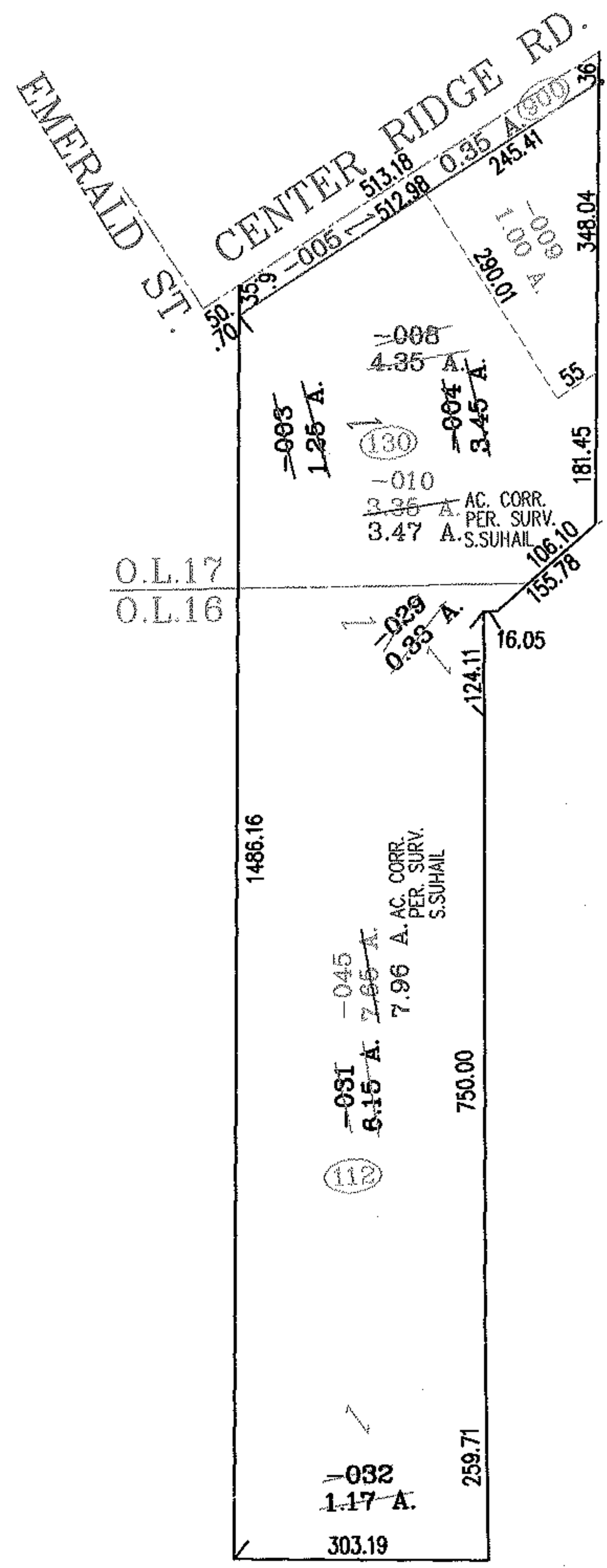


RASTER

PARENT PARCEL: 07-00-017-130-003,-004,07-00-016-112-029,-031,-032
CHILD PARCEL: 07-00-017-900-005,-006,07-00-017-130-008THRU-010,07-00-016-112-045
STARTING POINT: INTERSECTION OF C/L OF EMERALD ST. AND C/L OF CENTER RIDGE RD.

NO. 01616



SPLITS/DEEDS PROCESSED
LORAIN COUNTY TAX MAP DEPARTMENT
 226 MIDDLE AVE. ELYRIA, OHIO

SURVEYED BY: EHTESHAM M. SUHAIL
 CLOSURE: .02:10.000
 MAP PAGE(S): 7-00-016-B,7-00-017-D
 APPROVED BY: RRM DATE: 4-27-04
 SCALE: 1" = 250 PRIOR INSTRUMENT: 20030889974