

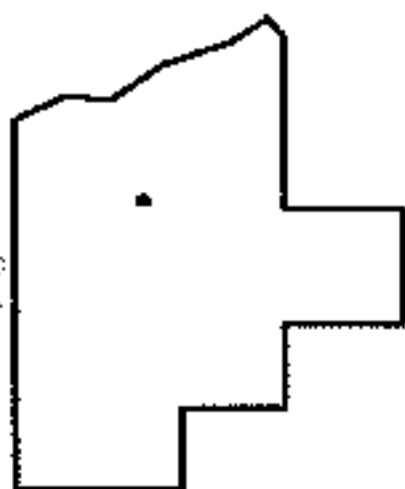
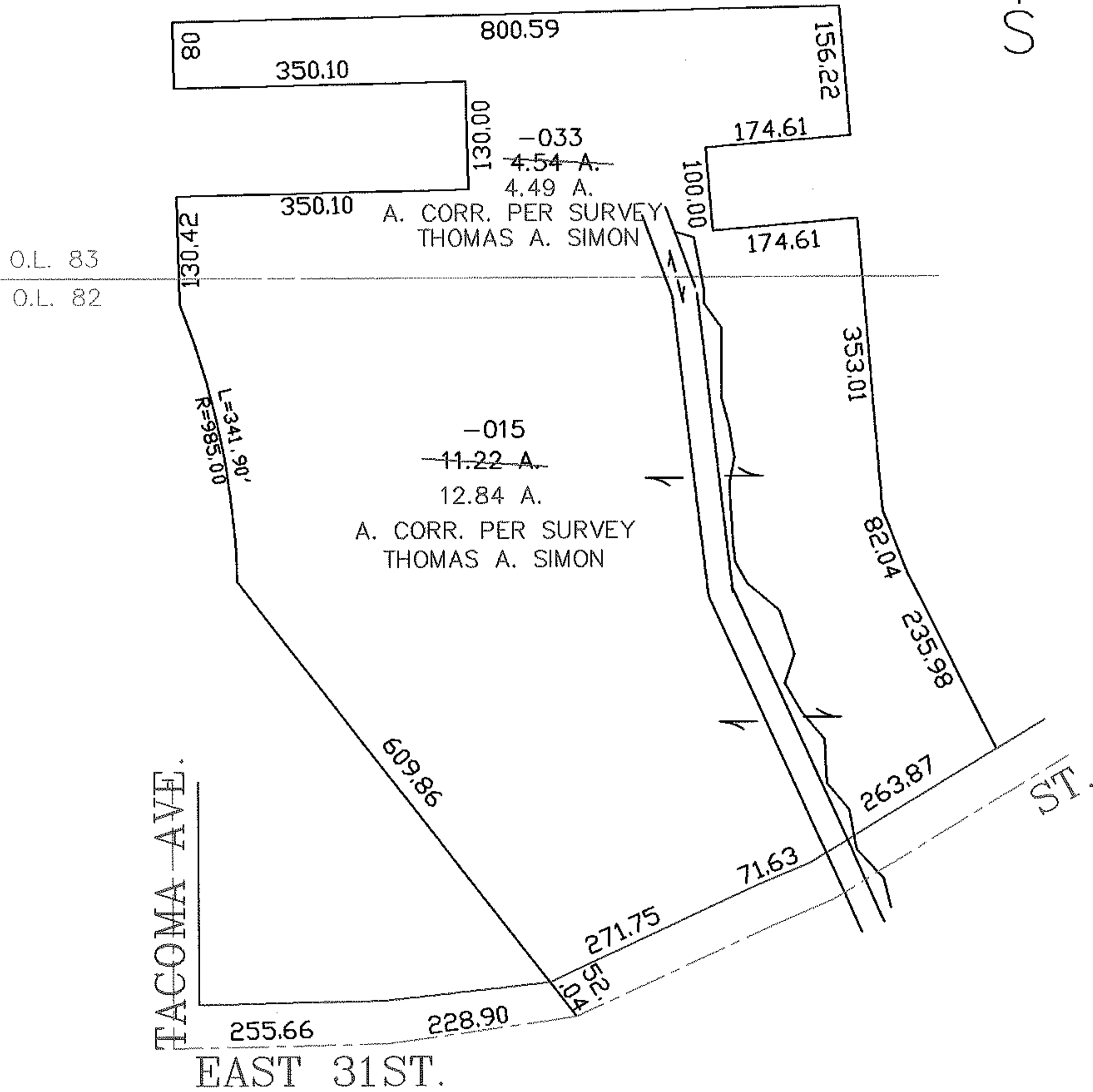
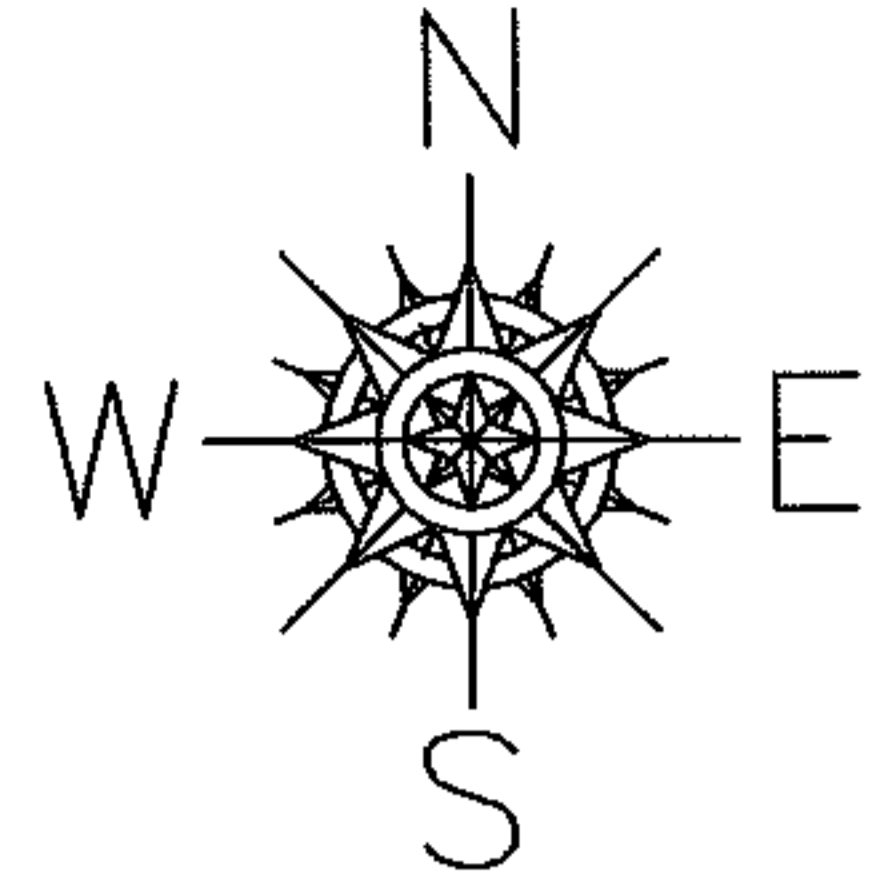
RASTER

PARENT PARCEL: 03-00-082-113-015, 03-00-083-101-033

CHILD PARCEL: SAME

STARTING POINT: CENTERLINE OF TACOMA AVE. & EAST 31ST. ST.

NO. 01609



SPLITS/DEEDS PROCESSED
 LORAIN COUNTY TAX MAP DEPARTMENT
 226 MIDDLE AVE. ELYRIA, OHIO

SURVEYED BY: THOMAS A. SIMON
 CLOSURE: 0.00 : 10,000
 MAP PAGE(S): 3-K, 3-00-081-B
 APPROVED BY: JAH DATE: 3-11-04
 SCALE: 1" = 200' PRIOR INSTRUMENT: 20020808532