

RASTER

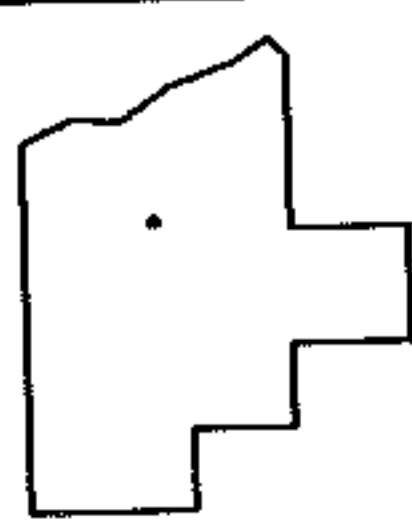
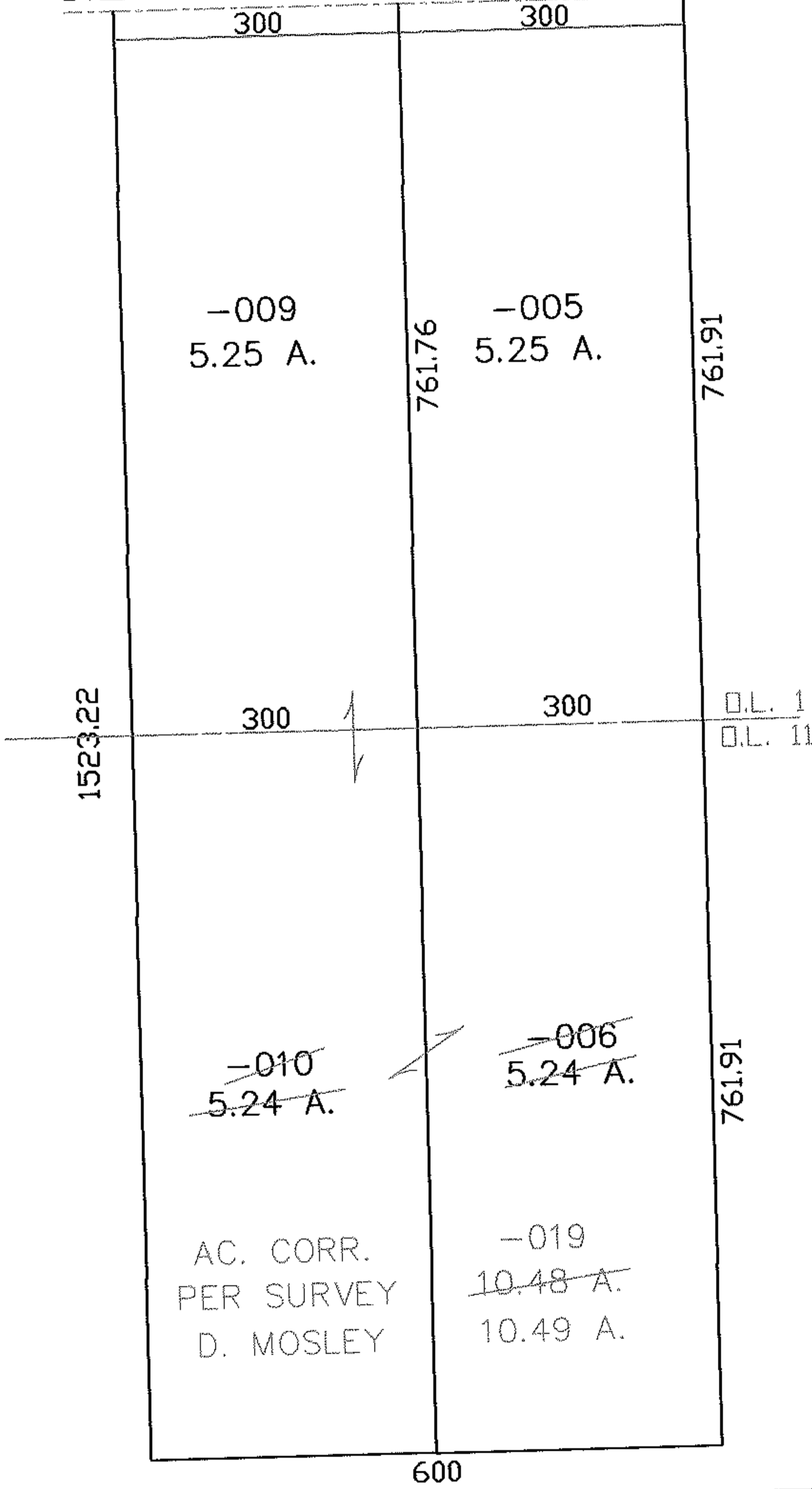
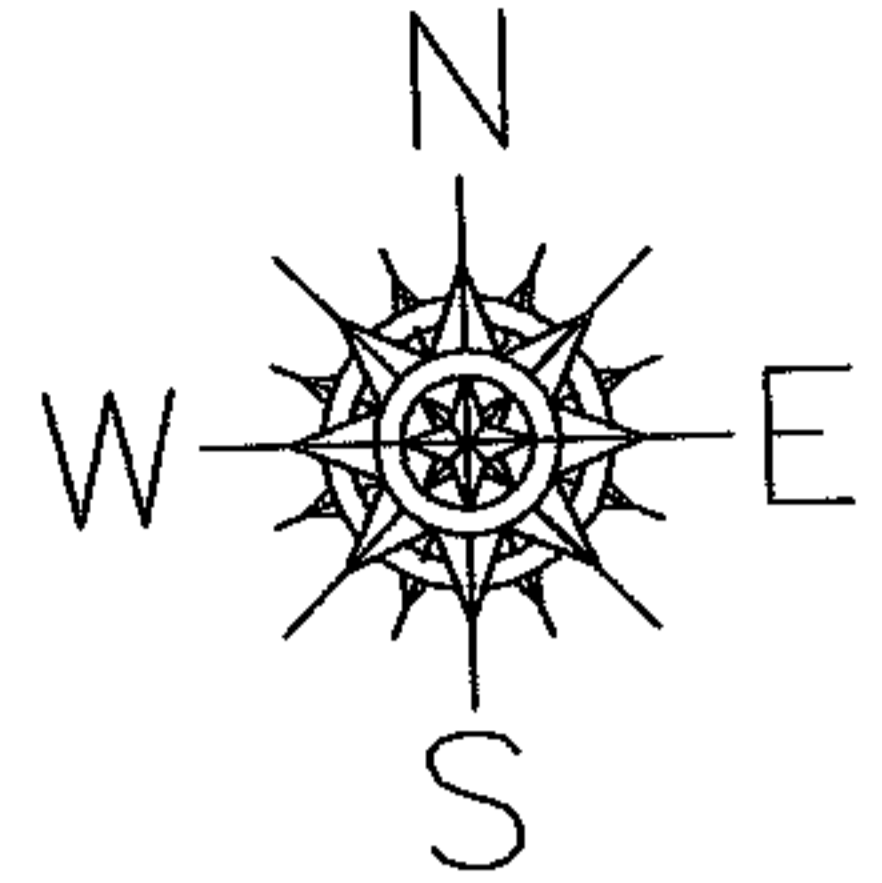
PARENT PARCEL: 21-08-001-000-005, -009, 21-08-011-000-006, -010

CHILD PARCEL: 21-08-001-000-005, -009, 21-08-011-000-019

STARTING POINT: INT CL NEW LONDON EASTERN RD AND NE CORNER OF LAND

NO. 01592

NEW LONDON EASTERN



SPLITS/DEEDS PROCESSED

LORAIN COUNTY TAX MAP DEPARTMENT
226 MIDDLE AVE. ELYRIA, OHIO

SURVEYED BY: DOUGLAS H. MOSLEY
 CLOSURE: 1:10,000
 MAP PAGE(S): 21-G
 APPROVED BY: DRH DATE: 2/10/2004
 SCALE: 1" = 200 PRIOR INSTRUMENT: OR 15/511