

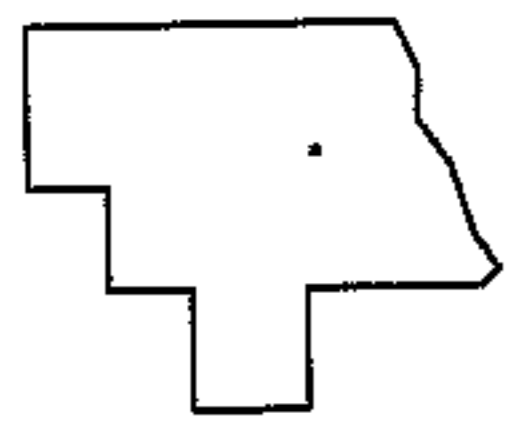
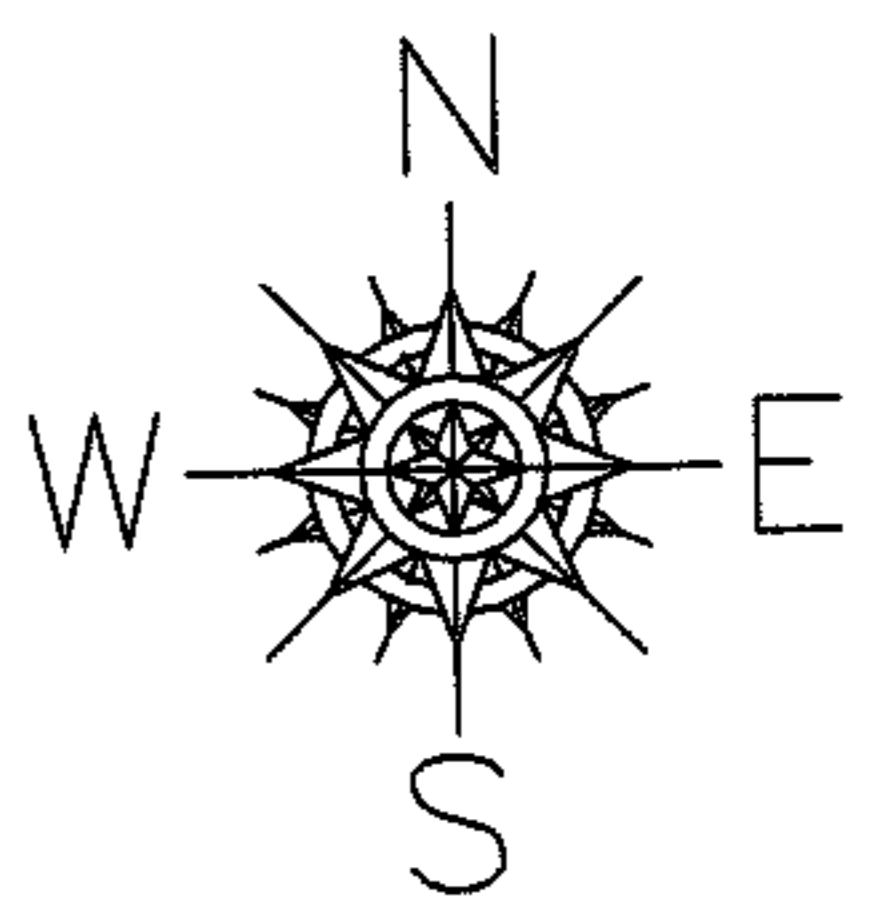
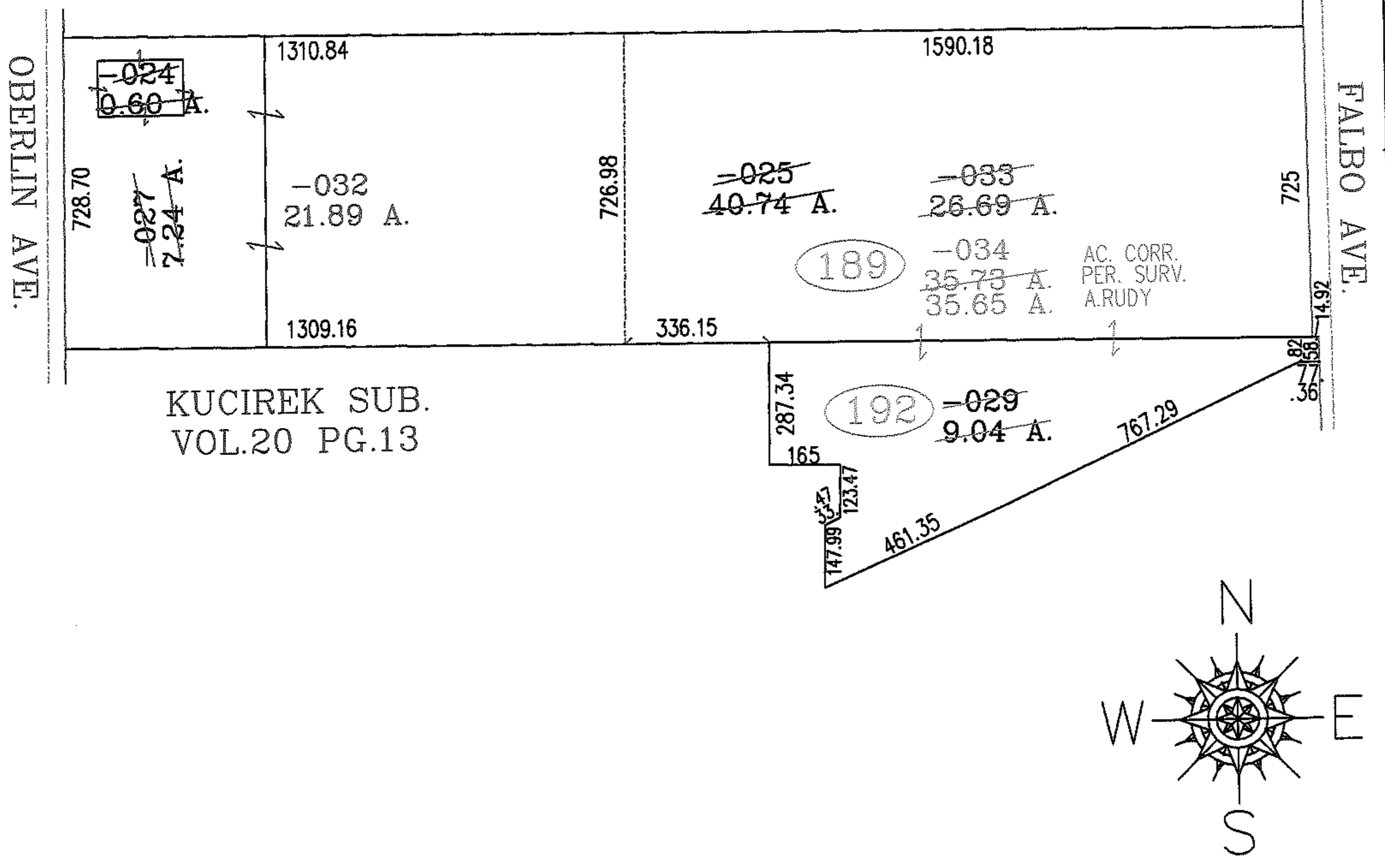
RASTER

NO. 01590

PARENT PARCEL: 02-01-006-189-024,-025,-027,02-01-006-192-029  
CHILD PARCEL: 02-01-006-189-032,-033  
STARTING POINT: NORTHWEST CORNER OF KUCIREK SUB.(VOL.20 PG.13)

FALBO SUB.  
VOL.18 PG.7

KUCIREK SUB.  
VOL.20 PG.13



**SPLITS/DEEDS PROCESSED**  
LORAIN COUNTY TAX MAP DEPARTMENT  
226 MIDDLE AVE. ELYRIA, OHIO

SURVEYED BY: ANDREW E. RUDY  
CLOSURE: 02:10.000  
MAP PAGE(S): 02-01-006-G  
APPROVED BY: RRM DATE: 2-6-04  
SCALE: 1" = 400' PRIOR INSTRUMENT: DV 548/362