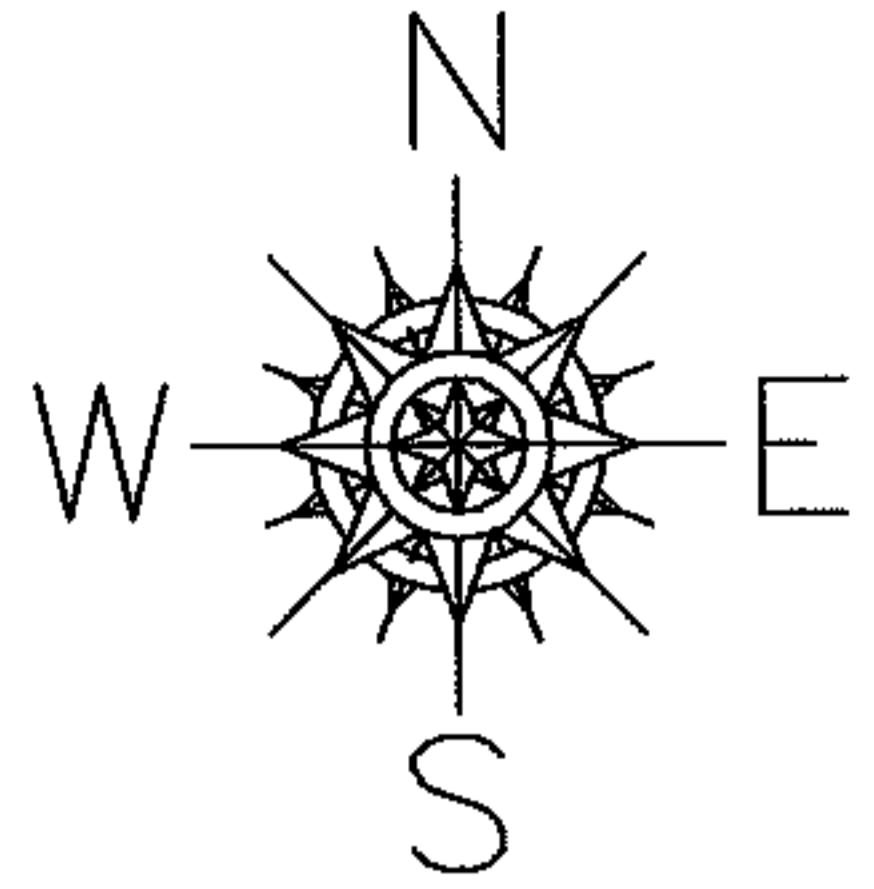


PARENT PARCEL: 18-00-029-000-041

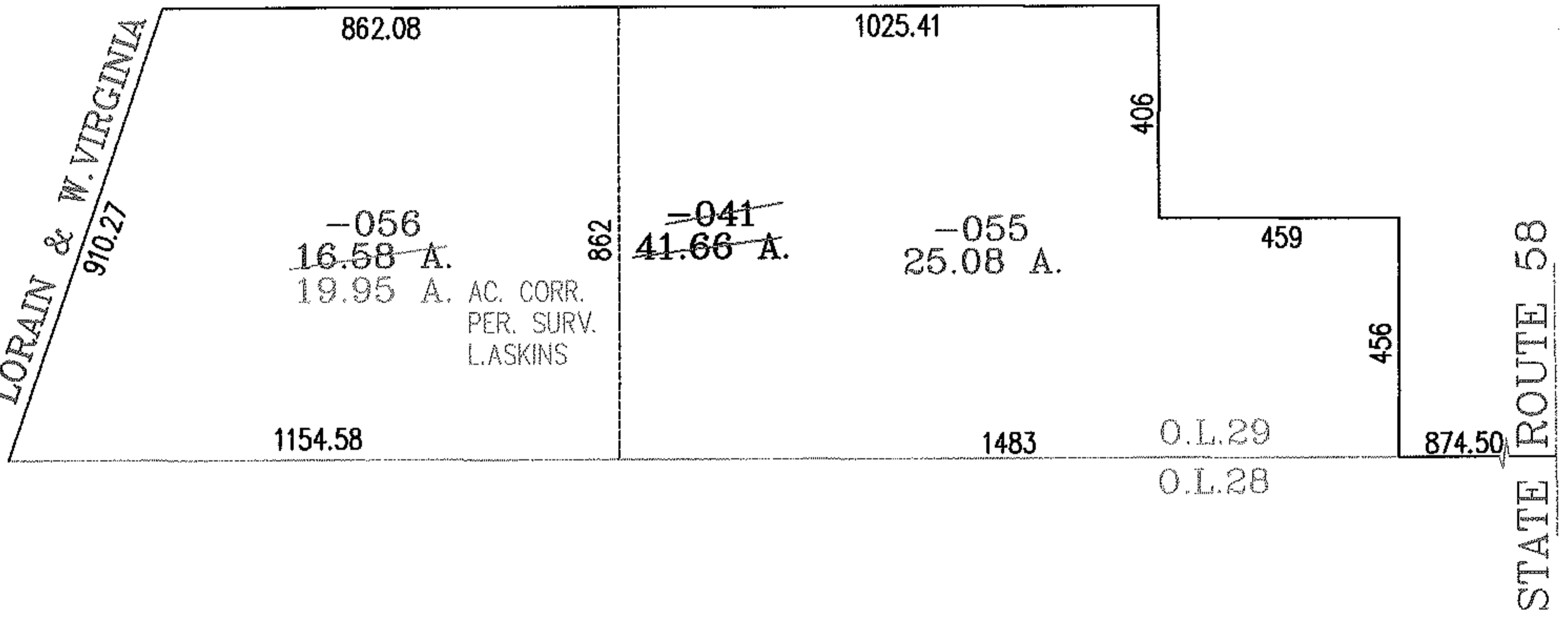
CHILD PARCEL: 18-00-029-000-055,-056

STARTING POINT: INTERSECTION OF C/L OF STATE ROUTE 58 AND SOUTH LINE OF O.L.29

NO. 01568



LORAIN & W. VIRGINIA R.R.
910.27



862.08

1025.41

406

~~-056~~
~~16.58~~ A.
19.95 A.

862

~~-041~~
~~41.66~~ A.

~~-055~~
25.08 A.

459

AC. CORR.
PER. SURV.
L. ASKINS

456

1154.58

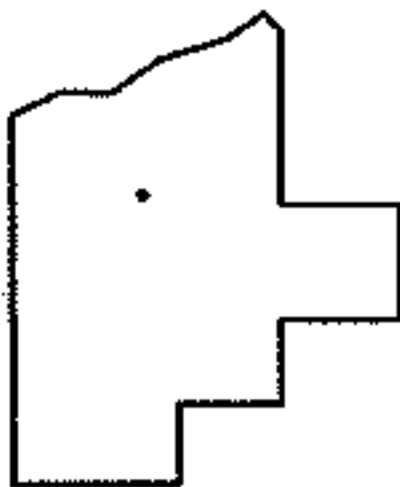
1483

O.L.29

874.50

O.L.28

STATE ROUTE 58



SPLITS/DEEDS PROCESSED
LORAIN COUNTY TAX MAP DEPARTMENT
226 MIDDLE AVE. ELYRIA, OHIO

SURVEYED BY: LARRY D. ASKINS
CLOSURE: .01:10,000
MAP PAGE(S): 18-00-029-D
APPROVED BY: RRM DATE: 1-9-04
SCALE: 1" = 400 PRIOR INSTRUMENT: DV 1395/103