

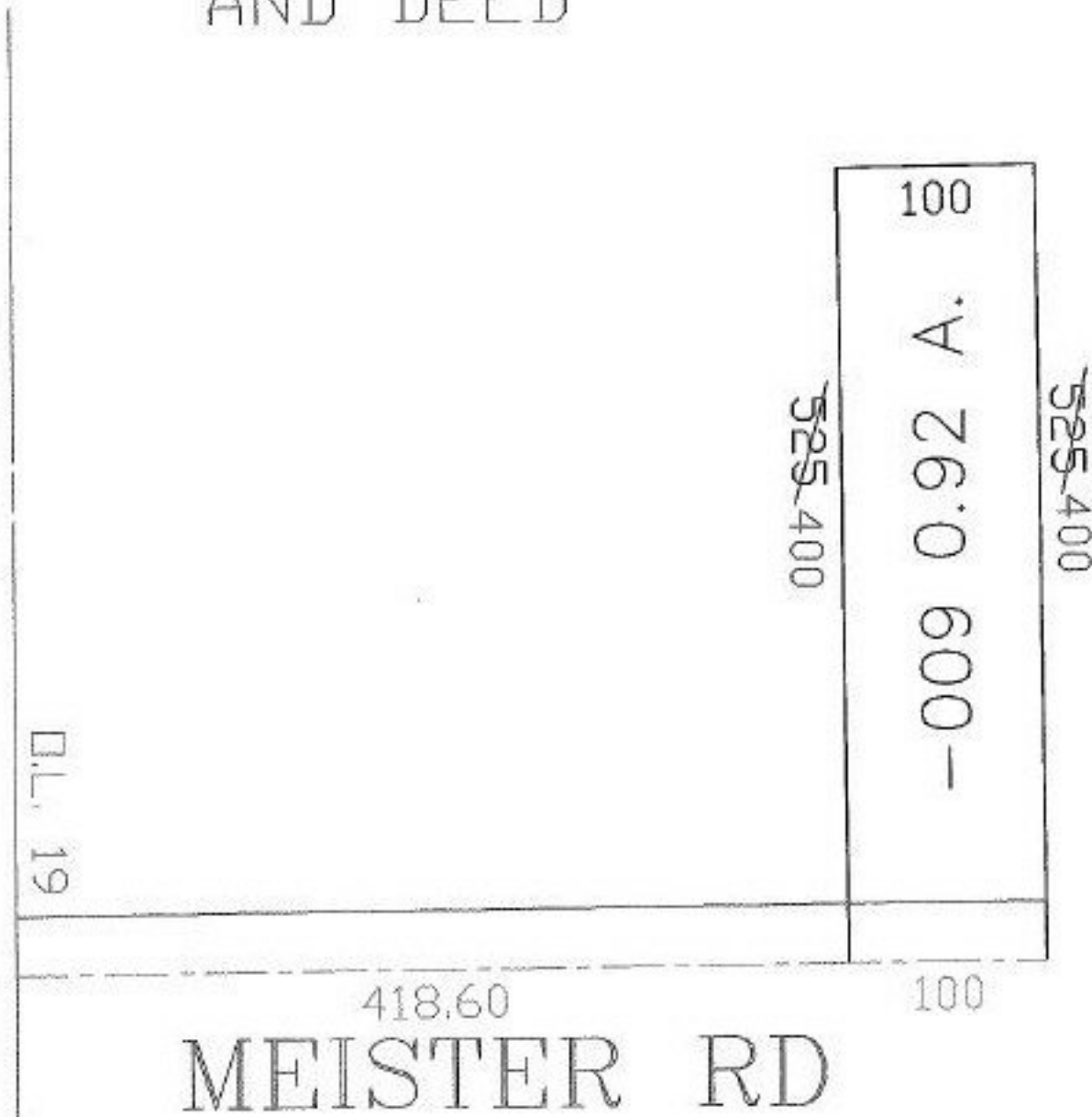
PARENT PARCEL: 02-02-019-103-009

CHILD PARCEL: --SAME--

STARTING POINT: INT MEISTER ROAD AND WEST LINE OF O.L. 19

NO. 00996-C

DEPTH CORR PER  
OLD MAPS  
AND DEED



SPLITS/DEEDS PROCESSED

LORAIN COUNTY TAX MAP DEPARTMENT  
226 MIDDLE AVE. ELYRIA, OHIO

SURVEYED BY: N/A  
 CLOSURE: N/A  
 MAP PAGE(S): 02-02-019-B  
 APPROVED BY: DRH DATE: 4/19/2004  
 SCALE: 1" = 100' PRIOR INSTRUMENT: 8433711851