

RASOFF

PARENT PARCEL: 03-00-102-115-046

CHILD PARCEL:

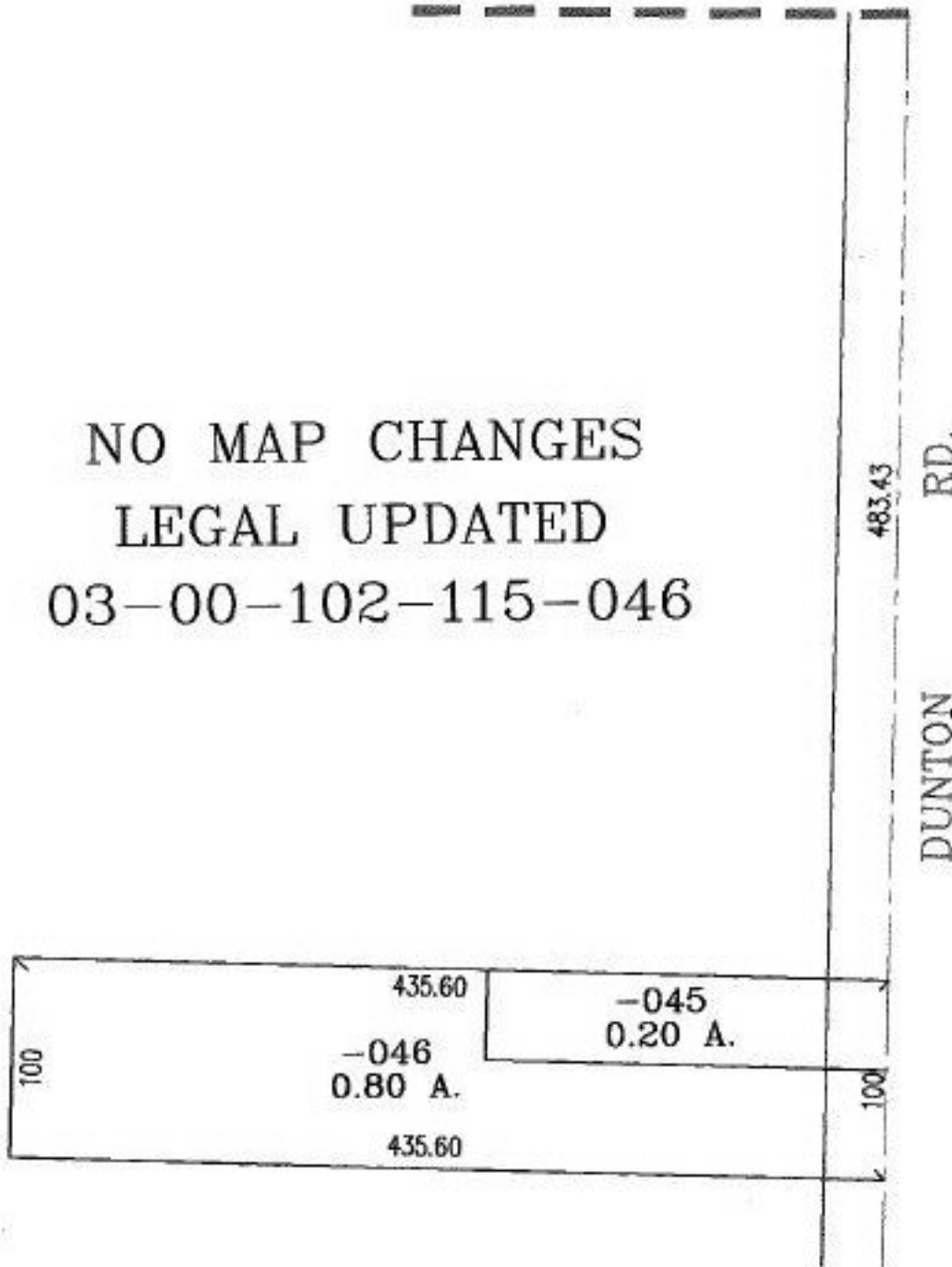
STARTING POINT: SOUTH LINE OF SHEFFIELD LAND AND IMPROVEMENT CO SUB. NO.8(V.6 PG.15)
AND C/L OF DUNTON RD.

NO. 00982-X

SHEFFIELD LAND AND IMPROVEMENT CO. SUB. NO.8
VOL.6 PG.15



NO MAP CHANGES
LEGAL UPDATED
03-00-102-115-046



SPLITS/DEEDS PROCESSED

LORAIN COUNTY TAX MAP DEPARTMENT
226 MIDDLE AVE. ELYRIA, OHIO

SURVEYED BY: RAY E. HOLLIS
CLOSURE: 00:10.000
MAP PAGE(S): 3-00-102-B
APPROVED BY: RRM DATE: 3-16-04
SCALE: 1" = 100. PRIOR INSTRUMENT: 20030973837