

RASTER

PARENT PARCEL: 02-01-004-101-057

CHILD PARCEL: ---SAME---

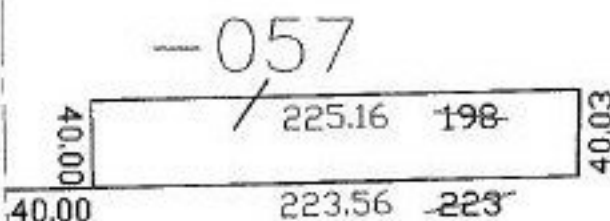
STARTING POINT: INT CL EIGHTH ST AND BROADWAY AVE

NO. 00965-D

# DEPTH CORR PER SURVEY THOMAS SIMON



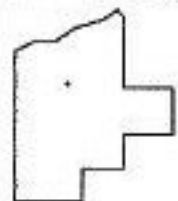
BROADWAY AVE.



-057

149.00

## EIGHTH ST



### SPLITS/DEEDS PROCESSED

LORAIN COUNTY TAX MAP DEPARTMENT  
226 MIDDLE AVE. ELYRIA, OHIO

SURVEYED BY: THOMAS SIMON

CLOSURE: 1:10,000

MAP PAGE(S): 02-01-003-C

APPROVED BY: DRH DATE: 1/30/2004

SCALE: 1" = 100' PRIOR INSTRUMENT: 2000709670