

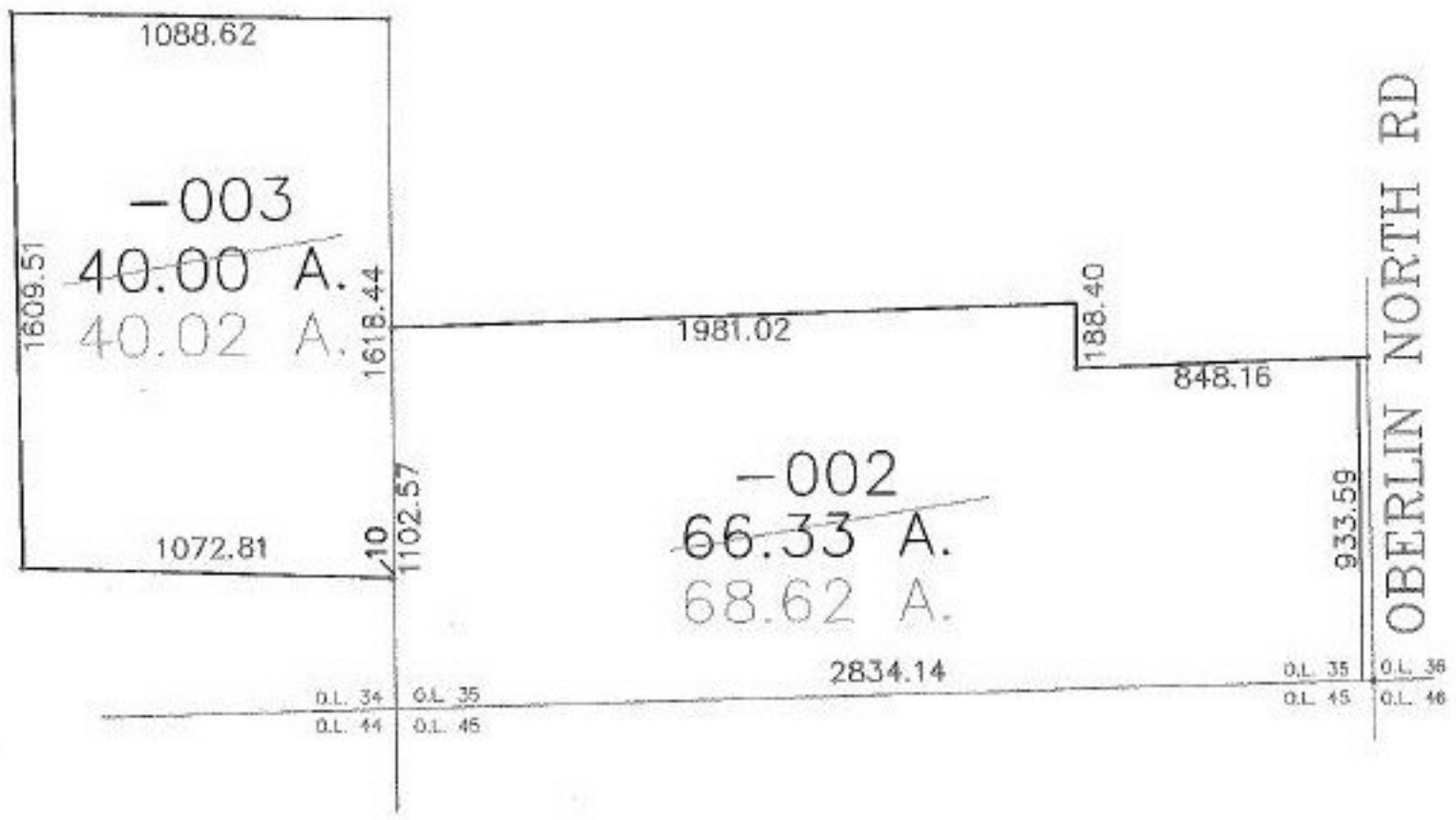
MASTER

PARENT PARCEL: 09-00-035-000-002, -003

CHILD PARCEL: --SAME--

STARTING POINT: INT CL OBERLIN N RD AND SE CORNER OF O.L. 35

NO. 00956-A



AC. CORR.
PER SURVEY
ALEX KELSER

PAGE 1 OF 2



SPLITS/DEEDS PROCESSED

LORAIN COUNTY TAX MAP DEPARTMENT
226 MIDDLE AVE. ELYRIA, OHIO

SURVEYED BY: ALEX KELSER
 CLOSURE: 1:60,000
 MAP PAGE(S): 9-B
 APPROVED BY: DRH DATE: 1/7/2003
 SCALE: 1" = 600' PRIOR INSTRUMENT: 20030910683