

RASTER

PARENT PARCEL: 09-00-095-103-004

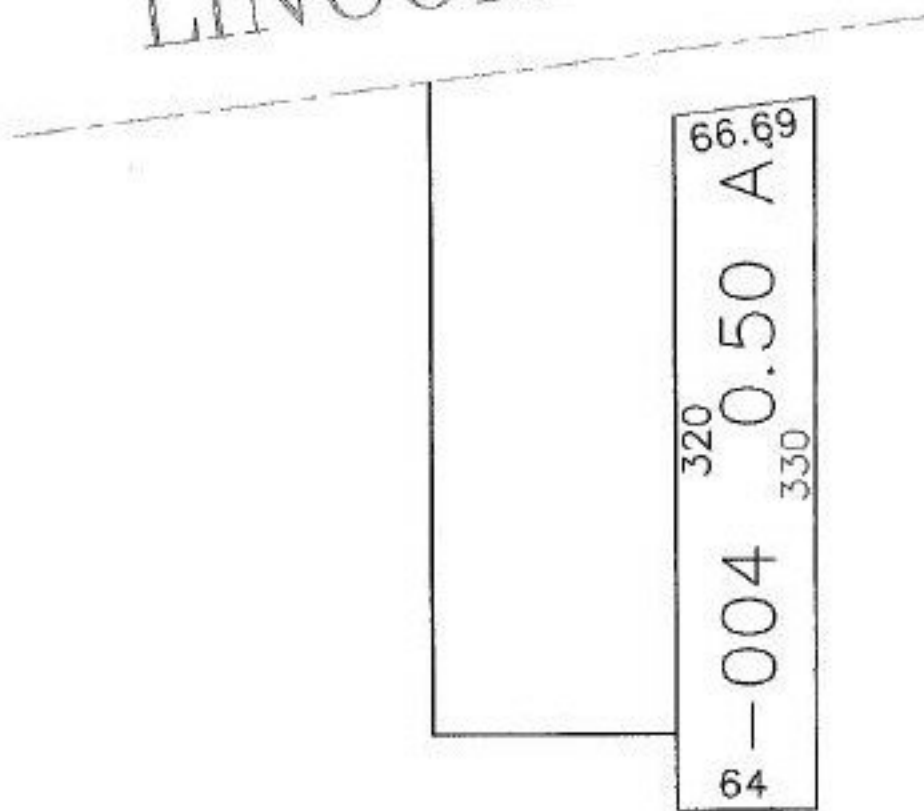
CHILD PARCEL: --SAME--

STARTING POINT: INT OF LINCOLN ST AND NE CORNER OF -004

NO. 00964-C



LINCOLN ST



SPLITS/DEEDS PROCESSED

LORAIN COUNTY TAX MAP DEPARTMENT  
226 MIDDLE AVE. ELYRIA, OHIO

SURVEYED BY: N/A

CLOSURE: N/A

MAP PAGE(S): 09-00-095-A

APPROVED BY: DRH DATE: 1/30/2004

SCALE: 1" = 100' PRIOR INSTRUMENT: 1090/891